

## Wythburn Gardens, Estover, Plymouth, Devon, PL6

£230,000

🛏 3 🚗 1 🛋 2



Welcome to Wythburn Gardens, where we have found the perfect home for a first-time buyer, young family or anyone looking for a low maintenance, turn key home in the Estover area! This very well presented, spacious house offers three bedrooms, modern kitchen and a lounge/diner. Positioned on the end of a small terrace of houses, the property benefits from a large enclosed rear garden overlooking a local nature reserve and off-road parking for two cars.

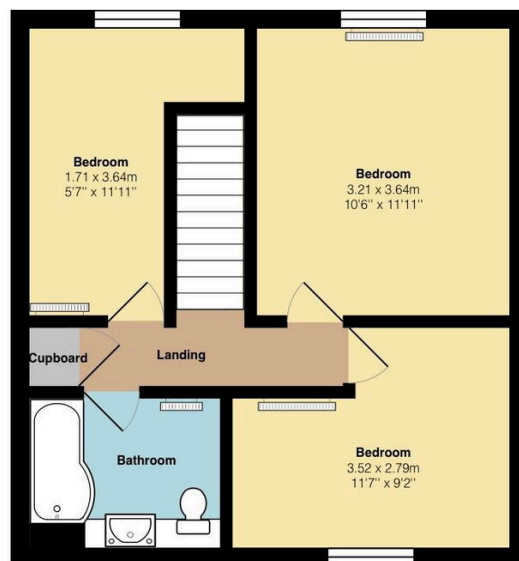
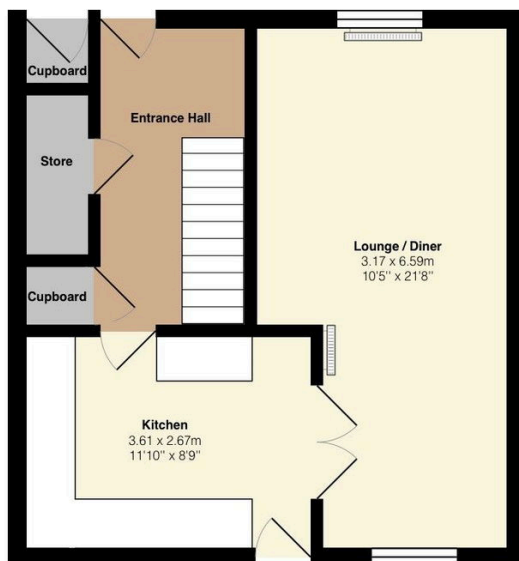


### DISCLAIMER:

Whilst Glad Stones Estates strive to ensure the accuracy of all details displayed in the marketing of all properties, we must point out that information has been provided verbally by the current vendor and therefore any potential buyer must make their own investigations prior to committing to purchase the property. A conveyancer must be appointed to conduct legal investigations and the details provided in the marketing material does not form any part of the contract. Glad Stones Estates have not tested any equipment, fixtures, fittings or services within the property.

### Key Features

- End of Terrace House in Cul-De-Sac Position
- Extremely Well Presented Throughout
- Large Lounge
- Spacious Enclosed Rear Garden
- EPC Grade D Council Tax Band B
- Close to Local Schools, shops and Amenities
- Modern Kitchen/Breakfast Room
- Three Bedrooms
- Driveway for Two Cars
- Viewing Highly Recommended



#### DISCLAIMER:

Whilst Glad Stones Estates strive to ensure the accuracy of all details displayed in the marketing of all properties, we must point out that information has been provided verbally by the current vendor and therefore any potential buyer must make their own investigations prior to committing to purchase the property. A conveyancer must be appointed to conduct legal investigations and the details provided in the marketing material does not form any part of the contract. Glad Stones Estates have not tested any equipment, fixtures, fittings or services within the property.