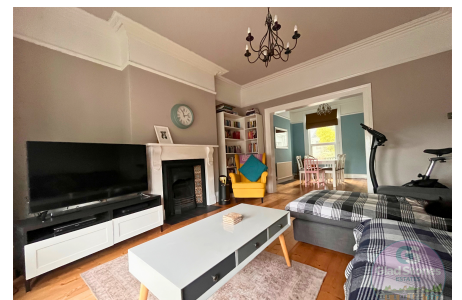
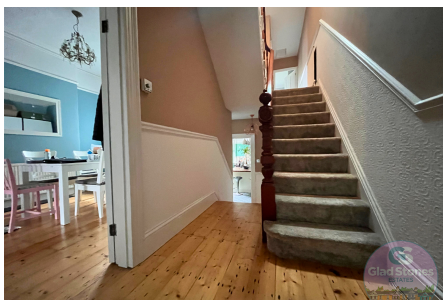


Devon Terrace, Peverell, Plymouth, PL3

£350,000

🛏️ 4 🚿 2 🚽 2



Situated on one of the most desirable roads in the Peverell area is this beautifully presented, period house. Offering four bedrooms, spacious lounge / Diner, large kitchen / breakfast room along with a utility room, rear garden, family bathroom and additional downstairs WC. Devon Terrace is highly regarded among local residents for its positioning close to Plymouth College, a very short stroll to nearby Hyde Park which is home to a number of independent shops and cafés, along with the lovely Central Park which offers beautiful walks, playparks, a health and wellbeing centre and hosts a number of the top events in the city. Peverell is within easy access to the city centre, historic Barbican and gateway to the ocean – Plymouth Hoe.



Key Features

- Beautifully Presented Period Property in Peverell
- Four Bedrooms
- Large Kitchen Breakfast
- Spacious Bathroom
- Council Tax Band C EPC Grade D
- Offering Character Features Throughout
- Lounge / Dining Room
- Utility Room and Downstairs WC
- Well Presented Throughout
- VIEWING HIGHLY RECOMMENDED

Ground Floor



First Floor

