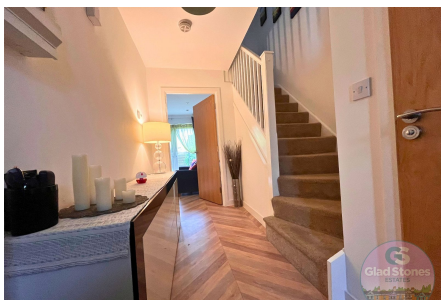


Mavisdale, Briarswood, Plymouth, PL2

£280,000

🛏 5 🚗 3 🚗 1



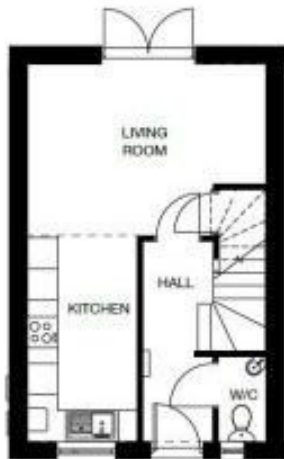
Marvelous Mavisdale!

Glad Stones Estates are pleased to showcase this impressive five-bedroom semi-detached townhouse in Plymouth. Over three floors this immaculately presented property offers versatile accommodation including a lounge/diner, modern kitchen, downstairs WC, spacious bedrooms, and a modern bathroom along with parking for two vehicles and a very well maintained, enclosed rear garden. Built in 2017 this property still offers the sleek, modern and fresh feel along with the NHBC certificate giving peace of mind to any new buyer.

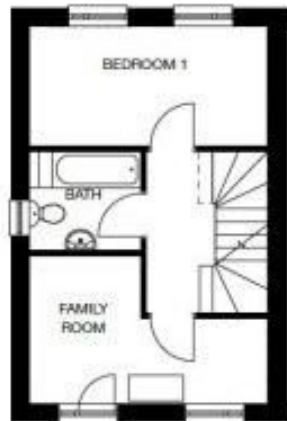


Key Features

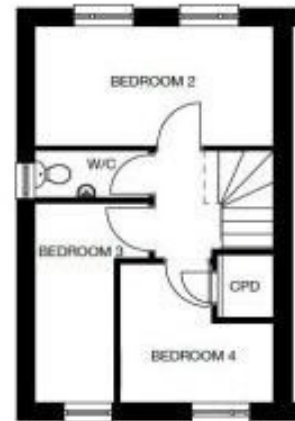
- Viewing Highly Recommended
- EPC Grade B Council Tax Band C
- Immaculately Presented Throughout
- No Onward Chain
- Parking for Two Vehicles
- Perfect Family Home
- Enclosed Rear Courtyard
- Five Bedrooms
- Solar Panels
- Three Story Town House Offering Versatile Accommodation



GROUND FLOOR	
KITCHEN:	
3.95m x 2.12m	12'10" x 6'10"
LIVING ROOM:	
4.59m x 3.30m	15'1" x 10'9"



FIRST FLOOR	
FAMILY ROOM:	
4.59m x 2.83m (max)	15'1" x 9'3"
BEDROOM 1:	
4.59m x 2.34m	15'1" x 7'7"
BATHROOM:	
2.15m x 1.90m	7'1" x 6'2"



SECOND FLOOR	
BEDROOM 2:	
4.59m x 2.30m	15'1" x 7'5"
BEDROOM 3:	
3.85m x 1.54m (min)	12'6" x 5'1"
BEDROOM 4:	
2.98m x 2.68m (max)	9'7" x 8'8"

