

ANWYL
thoughtful homes

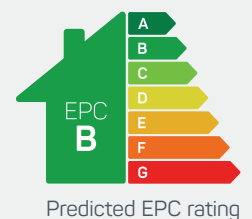


the betws

4 bed detached

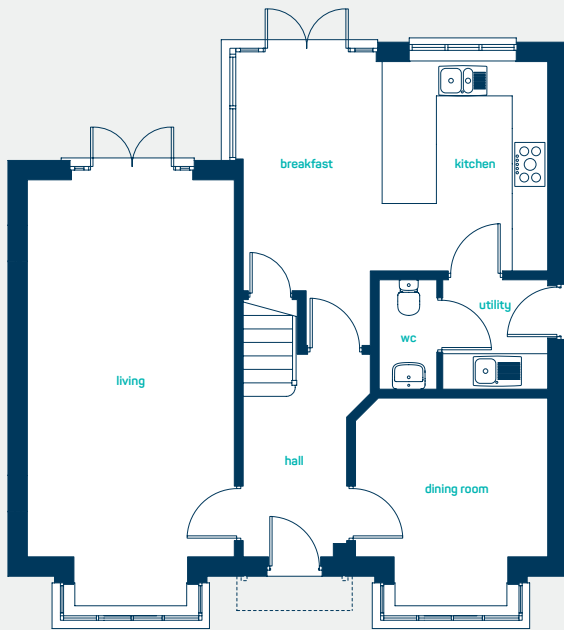
A *double-fronted* detached family home. Key features include a large living room and open plan kitchen diner plus master bedroom with en-suite.

www.anwylhomes.co.uk





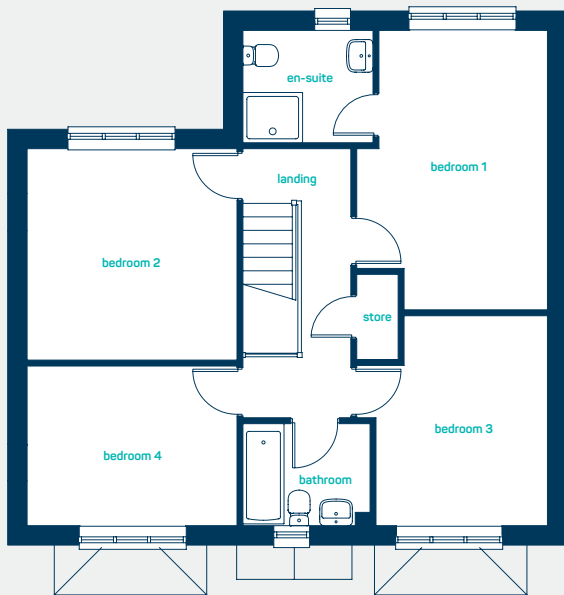
modern
open plan living



ground floor

living room	23' 4" x 11' 6"
kitchen	16' 11" x 15' 8"
dining	11' 2" x 10' 8"
utility	6' 1" x 5' 10"
cloaks	6' 1" x 3' 0"

living room	7.1m x 3.5m
kitchen	5.15m x 4.7m
dining	3.42m x 3.25m
utility	1.85m x 1.78m
cloaks	1.85m x 0.92m



first floor

bedroom 1	15' 6" x 10' 7"
en-suite	7' 3" x 6' 3"
bedroom 2	11' 9" x 11' 8"
bedroom 3	11' 8" x 8' 10"
bedroom 4	11' 8" x 10' 6"
bathroom	7' 1" x 5' 8"

bedroom 1	4.7m x 3.2m
en-suite	2.2m x 1.9m
bedroom 2	3.6m x 3.5m
bedroom 3	3.5m x 2.7m
bedroom 4	3.5m x 3.2m
bathroom	2.1m x 1.7m

the betws
4 bed detached

ANWYL
thoughtful homes

**NEW
HOMES
QUALITY
CODE**

**NEW HOMES
OMBUDSMAN
SERVICE**

www.anwylhomes.co.uk

Anwyl Homes is a Registered Developer with the NHQB. This is a computer-generated image of the betws, elevation treatment may vary. Room sizes are approximate, dimensions are taken from the longest room point (please consult homes advisor for measurement points). Plots may be handed and any garages may be single or double. Kitchen and bathroom layouts are indicative. These plans are correct at the time of going to press, but may be subject to change during construction. Please ensure that you check for specific plot details. 01/11/22.

everything considered.