

ANWYL
thoughtful homes

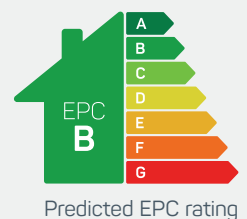


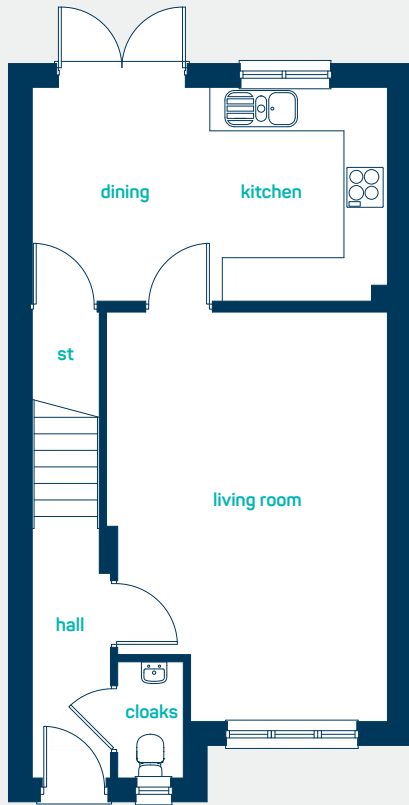
the clwyd

3 bed detached

A *perfect* starter home for first-time buyers, includes 3 bedrooms and an open plan kitchen diner and master bedroom with en-suite.

www.anwylhomes.co.uk



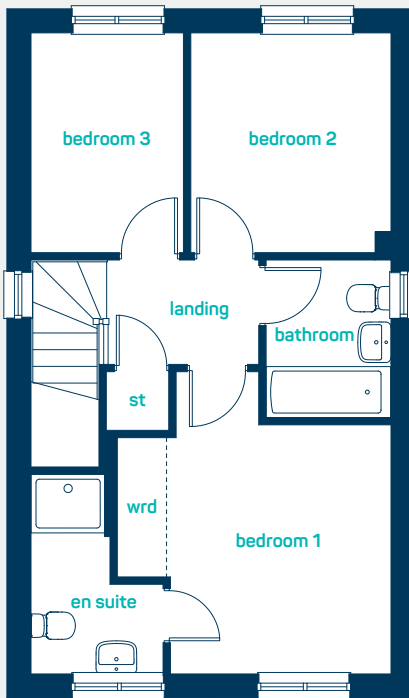


ideal for
first-time buyers

ground floor

kitchen/dining 16' 1" x 9' 8"
living room 18' 7" x 12' 9"
cloaks 5' 3" x 3' 0"

kitchen/dining 4.90m x 2.95m
living room 5.65m x 3.88m
cloaks 1.60m x 0.91m



first floor

bedroom 1 12' 3" x 11' 2"
bedroom 2 9' 10" x 8' 11"
bedroom 3 9' 10" x 6' 10"
bathroom 7' 1" x 5' 7"
en-suite 8' 11" x 5' 11"

bedroom 1 3.73m x 3.40m
bedroom 2 3.00m x 2.73m
bedroom 3 3.00m x 2.08m
bathroom 2.15m x 1.70m
en-suite 2.73m x 1.80m



the clwyd
3 bed detached

ANWYL
thoughtful homes

NEW HOMES QUALITY CODE

NEW HOMES OMBUDSMAN SERVICE

www.anwylhomes.co.uk

Anwyl Homes is a Registered Developer with the NHQB. This is a computer-generated image of the clwyd, elevation treatment may vary. Room sizes are approximate, dimensions are taken from the longest room point (please consult homes advisor for measurement points). Plots may be handed out and any garages may be single or double. Kitchen and bathroom layouts are indicative. These plans are correct at the time of going to press, but may be subject to change during construction. Please ensure that you check for specific plot details. 02/02/24.

everything considered.