



THE EMPLINS

Gamlingay



A HISTORIC AND ENCHANTING FORMER HALL HOUSE IN AN IDYLIC SETTING

The Emplins is a fascinating Grade II* listed former hall house, painstakingly restored over the years to preserve its exceptional architectural heritage. Steeped in history, this remarkable timber-framed home features an extraordinary blend of craftsmanship and elegant period details, offering a rare opportunity to own a living piece of England’s past.

			EPC
6	4	3	E

Local Authority: South Cambridgeshire District Council
Council Tax band: G
Services: Mains gas, electricity, water, drainage
Tenure: Freehold

DESCRIPTION

Initially, The Emplins was a grand hall house and later a rectory under Merton College, Oxford. Records from 1602 depict it as part of a thriving farmstead with a courtyard of agricultural buildings. Today, The Emplins is a beautifully curated home, rich in character and historic significance.

A much-loved family home for over 40 years, The Emplins exudes timeless charm and authenticity. The original features include a striking jettied storey, intricate linenfold paneling, mullioned windows, and exquisite wall paintings. At its heart, the spectacular Great Hall forms an inviting and atmospheric L-shaped reception room, anchored by a magnificent Inglenook fireplace and adorned with exposed timbers and a stunning linenfold door.

Beyond the hall, a charming front entrance lobby and study area leads into a spacious dining room, enriched with an early Ogee arch and former mullioned windows, making it a perfect space for entertaining. The side hall provides access to both the oak room/sitting room, featuring exposed timbers and a characterful fireplace, while the kitchen/breakfast room, with its traditional wooden cabinetry, enjoys delightful views of the garden. Additional practical spaces include a linen drying/boiler room, side hall with ample storage, and two stair lobbies, completing the ground floor layout.

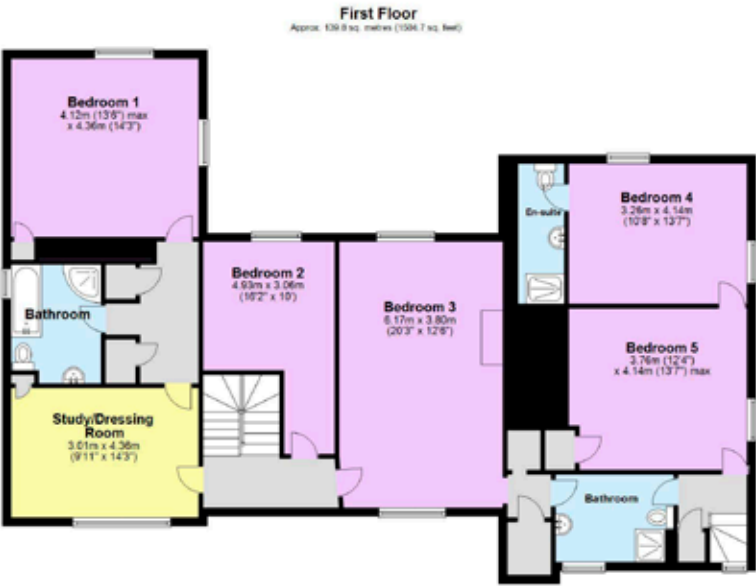
The first floor offers up to six bedrooms, with two not independently accessed. One showcasing original wall paintings and relocated linenfold panelling providing potential for a studio or dressing room, leading to the part-vaulted main bedroom and bathroom. Two of the bedrooms are in the central section of the house, while a further two bedrooms with a shower room occupy what was once the Guildhall, where the round-topped mullion windows have been sympathetically fitted with sliding glazed panels.

The mature gardens have been lovingly cultivated over many years, offering an array of hedging, trees and shrubs, and well-stocked herbaceous beds. To the rear, a delightful herb garden leads through a wisteria-clad archway into a vegetable garden and garage/stores, adding to the home’s enchanting character.



LOCATION

The Emplins is located in the popular village of Gamlingay, in the Cambridgeshire countryside, offering a supermarket, doctor’s surgery, and post office close by. The market towns of Biggleswade and Sandy are just a short drive away, with pubs, independent shops, and farm shops. Just a 40-minute drive, you can be in the city of Cambridge with its famous universities, fantastic architecture, and bustling shops and restaurants.



Approximate Gross Internal Area = 278.9 sq m / 3,001.9 sq ft

This plan is for layout guidance only. Not drawn to scale unless stated. Windows and door openings are approximate. Whilst every care is taken in the preparation of this plan, please check all dimensions, shapes and compass bearings before making any decisions reliant upon them. (ID767266)

We would be delighted
to tell you more.

Michael Houlden
01223 972910
michael.houlden@knightfrank.com

Knight Frank Cambridge
FORA, 20 Station Road, Cambridge
CB1 2JD

knightfrank.co.uk

Your partners in property

1. Particulars: These particulars are not an offer or contract, nor part of one. You should not rely on statements given by Knight Frank in the particulars, by word of mouth or in writing ("information") as being factually accurate about the property, its condition or its value. Neither Knight Frank nor any joint agent has any authority to make any representations about the property, and accordingly any information given is entirely without responsibility on the part of Knight Frank. 2. Material Information: Please note that the material information is provided to Knight Frank by third parties and is provided here as a guide only. While Knight Frank has taken steps to verify this information, we advise you to confirm the details of any such material information prior to any offer being submitted. If we are informed of changes to this information by the seller or another third party, we will use reasonable endeavours to update this as soon as practical. 3. Photos, Videos etc: The photographs, property videos and virtual viewings etc. show only certain parts of the property as they appeared at the time they were taken. Areas, measurements and distances given are approximate only. 4. Regulations etc: Any reference to alterations to, or use of, any part of the property does not mean that any necessary planning, building regulations or other consent has been obtained. A buyer must find out by inspection or in other ways that these matters have been properly dealt with and that all information is correct. 5. Fixtures and fittings: A list of the fitted carpets, curtains, light fittings and other items fixed to the property which are included in the sale (or may be available by separate negotiation) will be provided by the Seller's Solicitors. 6. VAT: The VAT position relating to the property may change without notice. 7. To find out how we process Personal Data, please refer to our Group Privacy Statement and other notices at <https://www.knightfrank.com/legals/privacy-statement>.

Particulars dated March 2025. Photographs and videos dated March 2025. All information is correct at the time of going to print. Knight Frank is the trading name of Knight Frank LLP. Knight Frank LLP is a limited liability partnership registered in England and Wales with registered number OC305934. Our registered office is at 55 Baker Street, London W1U 8AN. We use the term 'partner' to refer to a member of Knight Frank LLP, or an employee or consultant. A list of members names of Knight Frank LLP may be inspected at our registered office. If you do not want us to contact you further about our services then please contact us by either calling 020 3544 0692, email to marketing.help@knightfrank.com or post to our UK Residential Marketing Manager at our registered office (above) providing your name and address.