

# The Old School House, Samlesbury, Lancashire

---





An imposing **detached character property** which originates from the former historic old school, retaining much charm and character and set in large lawned gardens in a quiet yet convenient location with open countryside views.

**Summary of accommodation**

**Ground Floor:** Reception hall | Cloaks | Kitchen | Breakfast room | Garden room/conservatory | Snug | Utility room | Living room  
Bedroom five | Inner hall | Bedroom six

**First Floor:** Principal Bedroom with en suite bathroom | Bedroom two with en suite shower | Bedroom three with en suite shower  
Bedroom four | Family bathroom

**Second Floor:** Leisure/attic room

In all about 1 acre

**Distances**

Blackburn 5 miles, Preston 6 miles, Manchester 35 miles  
(All distances and times are approximate)



Knight Frank Yorkshire  
18 Blake Street  
York  
YO1 8QG  
[knightfrank.co.uk](http://knightfrank.co.uk)

Melissa Lines  
01904 948451  
[melissa.lines@knightfrank.com](mailto:melissa.lines@knightfrank.com)





## The property

This spacious and well-presented property is located in a quiet location but within a few minutes' drive of the M6 motorway, ideal for the commuter.

A reception hall is accessed by a double-pitched pine entrance door with decorative stained glass top windows and original half-panelled walls, a diamond set black and white ceramic floor and an open minstrel's gallery with balustrade. Double doors lead into the well-proportioned living room, with decorative stained glass window and original feature arched windows to the front and gable elevation with leaded windows, exposed foot timbers and wall panelling. An inner hall leads to bedroom five and a cosy snug and a cloakroom/WC.

The kitchen is fitted with an excellent range of high-quality fitted oak wall and floor units in a hand-painted finish with matching island preparation and breakfasting area. An excellent range of built-in appliances, including 'Miele' ceramic hob and barbecue grill, electric oven, microwave, steam oven and coffee machine, wine cooler, double 'Belfast' sink and four oven gas-fired 'AGA' set in a decorative recessed alcove, limestone flooring, double French doors leading into the rear garden and built-in fridge/freezer with ice dispenser.





The breakfast room leads off the kitchen area and has limestone flooring and double French doors. The impressive garden room/conservatory has limestone flooring and hardwood double French doors leading into the garden. There is a utility room and also access to Bedroom six.

On the first floor is an attractive Minstrel's gallery with feature leaded and stained glass window. The principal bedroom has two leaded stone mullioned windows, stripped floorboards, access into an en suite bathroom, free-standing roll bath with ball and claw feet, shower mixer attachment, separate corner shower, pedestal wash hand basin, and low-level WC. chrome heated towel rail and radiator. Bedrooms two and three both have en suite bathrooms. Bedroom four has an attractive timber balcony and decorative wrought iron railings. The family bathroom completes the first-floor accommodation.

To the second floor is a leisure/attic room which spans the full length of the property and has four 'Velux' roof lights and access into the eaves for storage; there are also two radiators.



**Approximate Gross Internal Floor Area**

306.57 sq m / 3299.89 sq ft

Garage: 32.47 sq m / 349.50 sq ft

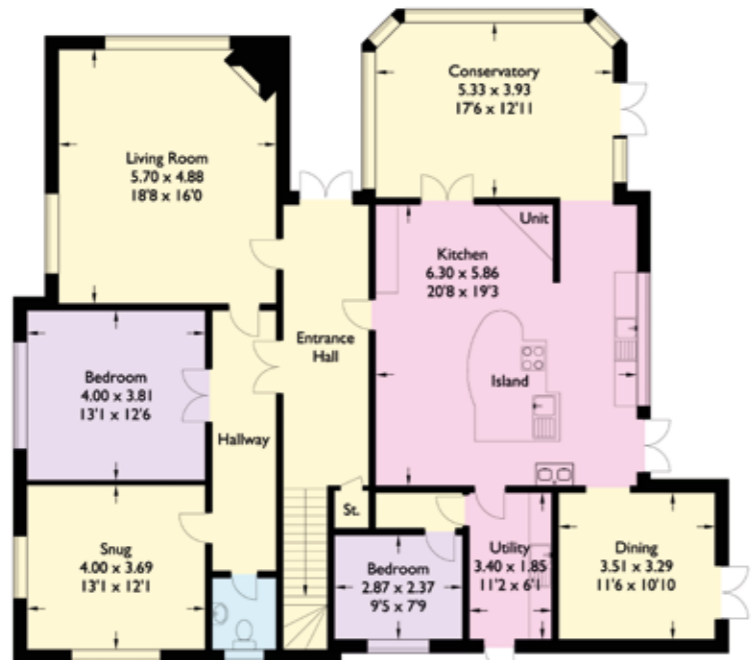
Total: 339.04 sq m / 3649.39 sq ft

This plan is for guidance only and must not be relied upon as a statement of fact. Attention is drawn to the Important Notice on the last page of the text of the Particulars.

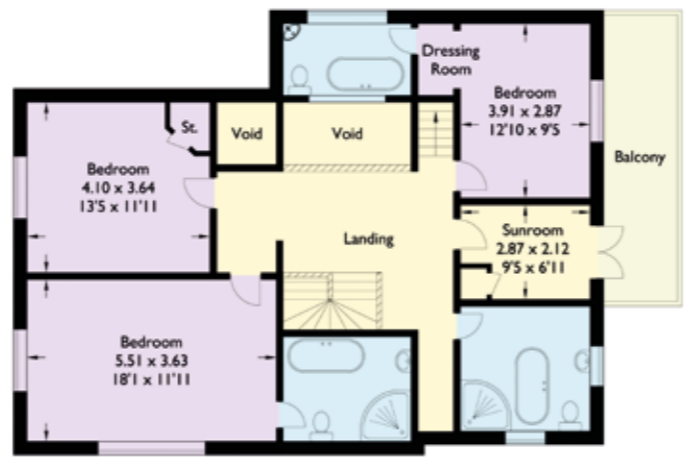
- Reception
- Bedroom
- Bathroom
- Kitchen/Utility
- Storage
- Outside



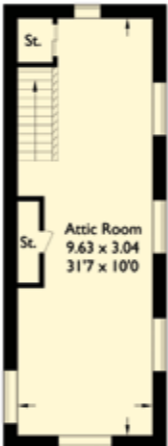
Garage



Ground Floor



First Floor



Attic Floor





## Externally

The property is approached from the public highway through a timber five-bar gate leading into a tarmac drive and turning area. There is a detached double garage with an electrically operated double door, lighting, power and water installed. The main garden areas are to the rear elevation and are mainly laid to lawn with mature surrounding trees and shrubs, an ornamental pond with surrounding stone and timber areas ideal for outdoor entertaining. There is a timber summerhouse and children garden playhouse; there are further lawned areas to the front and side of the property, and the gardens extend to around 1 acre.



## Services

Gas central heating, mains electricity, mains water, private sewage system.

## Property information

**Tenure:** Freehold

**Local Authority:** South Ribble Borough Council

**Council Tax:** Band G

**EPC Rating:** D

**Guide Price:** £975,000



Fixtures and fittings: A list of the fitted carpets, curtains, light fittings and other items fixed to the property which are included in the sale (or may be available by separate negotiation) will be provided by the Seller's Solicitors.  
 Important Notice: 1. Particulars: These particulars are not an offer or contract, nor part of one. You should not rely on statements by Knight Frank LLP in the particulars or by word of mouth or in writing ("information") as being factually accurate about the property, its condition or its value. Neither Knight Frank LLP nor any joint agent has any authority to make any representations about the property, and accordingly any information given is entirely without responsibility on the part of the agents, seller(s) or lessor(s). 2. Photos, Videos etc: The photographs, property videos and virtual viewings etc. show only certain parts of the property as they appeared at the time they were taken. Areas, measurements and distances given are approximate only. 3. Regulations etc: Any reference to alterations to, or use of, any part of the property does not mean that any necessary planning, building regulations or other consent has been obtained. A buyer or lessee must find out by inspection or in other ways that these matters have been properly dealt with and that all information is correct. 4. VAT: The VAT position relating to the property may change without notice. 5. To find out how we process Personal Data, please refer to our Group Privacy Statement and other notices at <https://www.knightfrank.com/legals/privacy-statement>.

Particulars dated September 2023. Photographs and videos dated September 2023.  
 All information is correct at the time of going to print. Knight Frank is the trading name of Knight Frank LLP. Knight Frank LLP is a limited liability partnership registered in England and Wales with registered number OC305934. Our registered office is at 55 Baker Street, London W1U 8AN. We use the term "partner" to refer to a member of Knight Frank LLP, or an employee or consultant. A list of members names of Knight Frank LLP may be inspected at our registered office. If you do not want us to contact you further about our services then please contact us by either calling 020 3544 0692, email to [marketing.help@knightfrank.com](mailto:marketing.help@knightfrank.com) or post to our UK Residential Marketing Manager at our registered office (above) providing your name and address. Brochure by [wordperfectprint.com](http://wordperfectprint.com)

