



158 Henke Court

Cardiff Bay, Cardiff, CF10 4EL

Offers In The Region Of £220,000

HARRIS & BIRT



This property is conveniently located within walking distance to both Cardiff Bay and the City Centre. This two bedroom property briefly comprises; entrance hall, open plan lounge/diner/kitchen, two double bedrooms, one with en suite and a family bathroom. The property benefits from double glazing, electric heating to bathrooms and one allocated parking space with three visitors parking badges. Council Tax banding D. EPC Rating B

Located in a very popular development perfectly situated close to the water front with link roads into the City Centre. Within walking distance to Mermaid Quay hosting a wide variety of restaurants, bars, cafes and shops including the Wales Millennium Centre and popular Everyman Cinema. The property is a short walk from Cardiff Bay train station offering links to Cardiff City Centre train station also provide links to other major cities including; Swansea, Newport, Bristol etc.



Accommodation

Entrance Hall 4'6" x 17'0" (1.37m x 5.18m)

The property is entered via hardwood front door into open entrance hall. Skimmed walls and ceiling. Wood flooring. Pendant ceiling light. One storage cupboard. Doorways into all rooms.

Kitchen/Living/Dining Room 25'0" x 16'3" (7.62m x 4.95m)

Modern fitted kitchen with a range of wall and base units set under and over a white worksurface with matching upstands and glass splashbacks. Features include; one and a half bowl sink and drainer, Candy eyeline oven and grill, five ring electric Smeg hob with Smeg extractor fan over and pan drawers under. Integral Hoover washing machine and Beko dishwasher behind matching decor panels. Samsung fridge/freezer. Continuation of wood flooring. Skimmed walls and ceilings. Range of pendant ceiling lights and wall lights. Two UPVC double glazed windows to front and one UPVC double glazed window to rear allowing plenty of natural light. Room for both living room furniture and dining table with chairs.

Bedroom One 11'0" x 12'0" (3.35m x 3.66m)

A good sized double bedroom with UPVC double window to side elevation. Skimmed walls and ceiling. Pendant ceiling light. Two door fitted wardrobe. Fitted carpet. Electric heater. Doorway into;

En Suite 8'3" x 4'8 (2.51m x 1.42m)

Three piece suite in comprising; walk in shower cubicle with mains connected shower and rainfall shower head fitment, low level hidden cistern WC

and wall hung sink with fitted cupboards under. Marble effect fully tiled walls and further skimmed ceiling. Inset LED spotlighting. Extractor fan. Shaving point. Chrome heated towel rail.

Bedroom Two 8'10" x 12'2" (2.69m x 3.71m)

Another good sized double bedroom with UPVC double glazed window to side elevation. Skimmed walls and ceiling. Carpet flooring. Pendant ceiling light. Electric Heater.

Bathroom 8'10" x 7'9" (2.69m x 2.36m)

Three piece suite in white comprising free-standing bath with separate shower head fitment and PVC splashbacks, low level WC and wall hung wash hand basin. Further skimmed walls and skimmed ceiling. LED spotlighting. Heated towel rail. Extractor fan. Tiled floor.

Services

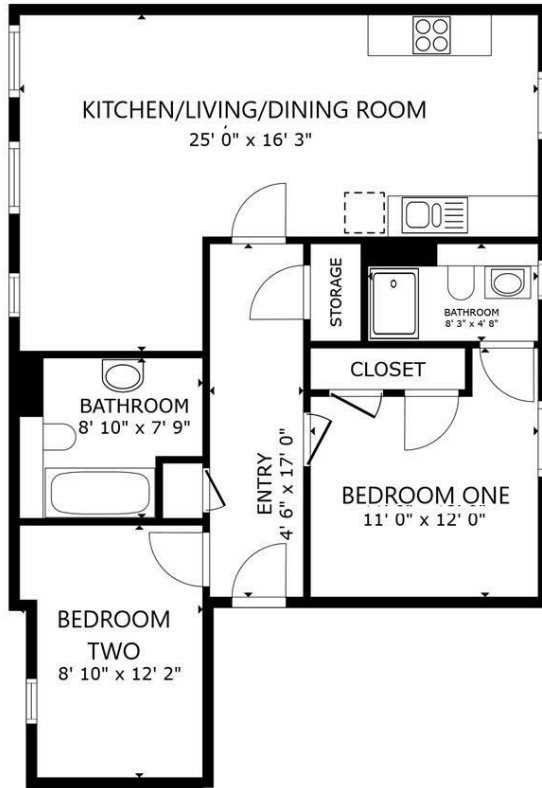
Mains connected electricity, water and drainage.

Leasehold Information

Service charge is £3062 per annum and ground rent of £255.20 per annum inclusive of water rates. Remaining years on lease 975 . There is one parking space with the property and you have three visitors badges.







GROSS INTERNAL AREA
FLOOR PLAN 772 sq.ft.
TOTAL : 772 sq.ft.
SIZES AND DIMENSIONS ARE APPROXIMATE, ACTUAL MAY VARY.



HARRIS & BIRT

Chartered Surveyors, Land and Estate Agents

Cowbridge

Cardiff

65 High Street, Cowbridge, CF71 7AF

359 Caerphilly Road, Cardiff, CF14 4QF

01446 771777 cowbridge@harrisbirt.co.uk

02920 614411 cardiff@harrisbirt.co.uk

harrisbirt.co.uk

Energy Efficiency Rating		
	Current	Potential
Very energy efficient - lower running costs		
(92 plus) A		
(81-91) B		
(69-80) C		
(55-68) D		
(39-54) E		
(21-38) F		
(1-20) G		
Not energy efficient - higher running costs		
England & Wales	EU Directive 2002/91/EC	

Environmental Impact (CO ₂) Rating		
	Current	Potential
Very environmentally friendly - lower CO ₂ emissions		
(92 plus) A		
(81-91) B		
(69-80) C		
(55-68) D		
(39-54) E		
(21-38) F		
(1-20) G		
Not environmentally friendly - higher CO ₂ emissions		
England & Wales	EU Directive 2002/91/EC	



Harris & Birt is the trading name of Ingram Evans Care Ltd. Registered Office: 359 Caerphilly Road, Cardiff, CF14 4QF. Company No: 04845507
 You may download, store and use the material for your own personal use and research. You may not republish, retransmit, redistribute or otherwise make the material available to any party or make the same available on any website, online service or bulletin board of your own or of any other party or make the same available in hard copy or in any other media without the website owner's express prior written consent. The website owner's copyright must remain on all reproductions of material taken from this website.