



Lansdown Road

WIMBLEDON VILLAGE • GUIDE PRICE
£1,100,000

- Three Bedrooms and Three Bathrooms
- Secure Allocated Parking for Two Cars
- Newly Decorated Throughout
- Gated Development
- Share of Freehold





Fabulous Penthouse with three bedrooms, three bathrooms stunning roof terrace. Plus, allocated parking for two cars.

DESCRIPTION

This duplex Penthouse is conveniently located, in a purpose build gated development just off The Ridgway, with allocated parking for two cars and a lift to the apartment.

The entrance floor has access to three double bedrooms, two with ensembles plus an additional family bathroom. The open-plan upper floor is flooded with natural light and consists of a designer fitted kitchen, breakfast/dining area a generous reception area with large bi-fold doors leading onto south/east facing roof terrace.

The property is discreetly positioned just off The Ridgway, and within easy reach of Wimbledon Village, with a great variety of shops, café and restaurants (0.7mi or 15min walk) Also well placed for transport hubs at Wimbledon & Raynes Park each with its own unique selection of shops and businesses.

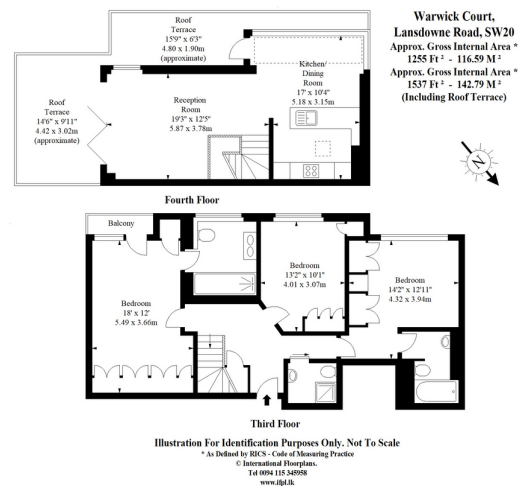
TERMS

Price: Guide Price £1,100,000

Tenure: Share of Freehold

Ground Rent:

Service Charge: £3,300.00



FIND OUT MORE



Noah Pearlman MNAEA

Partner

020 8187 4836

noah.pearlman@hardinggreen.com

Important Notice. We would like to inform prospective purchasers that these sales particulars have been prepared as a general guide only. A detailed survey has not been carried out, nor the services, appliances and fittings tested. Room sizes should not be relied upon for furnishing purposes and are approximate. If floor plans are included, they are for guidance only and illustration purposes only and may not be to scale. If there are any important matters likely to affect your decision to buy, please contact us before viewing the property.