



Pindock Mews

• GUIDE PRICE £2,000,000





A truly unique development opportunity in the heart of Maida Vale (subject to planning)

DESCRIPTION

A gem of a mews house is located on arguably the most sought-after location in Maida Vale. The property is currently arranged over two floors with double garage space with additional flexible living space across the first floor consisting of double bedroom, office/bedroom, bathroom, reception room and kitchen.

Pindock Mews connects with Warwick Avenue and Castellain Road and located in the heart of the Maida Vale conservation area and only a few minutes' walk Formosa Street which has a great mix of shops, cafes, and restaurants. Plus, little Venice and the Regents Canal are less than five minutes' walk. Transport links can be found at Warwick Avenue (Bakerloo line)

TERMS

Price: Guide Price £2,000,000

Tenure: Freehold

Ground Rent:

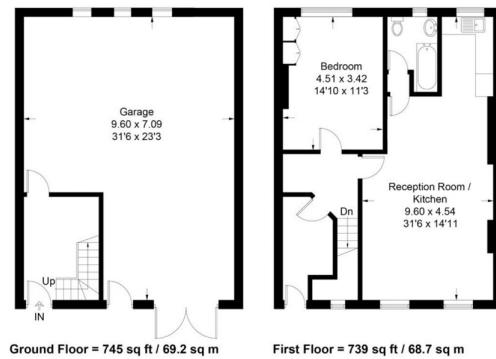
Service Charge:

Local Authority: Westminster

Council Tax: TBC

Energy Rating:

Approximate Gross Internal Area = 137.9 sq m / 1484 sq ft



All measurements are in accordance to the RICS Code Of Measuring Practice. Measurements are approximate & only for illustrative purposes.



FIND OUT MORE



Noah Pearlman

020 8187 4836

noah.pearlman@hardinggreen.com

Important Notice. We would like to inform prospective purchasers that these sales particulars have been prepared as a general guide only. A detailed survey has not been carried out, nor the services, appliances and fittings tested. Room sizes should not be relied upon for furnishing purposes and are approximate. If floor plans are included, they are for guidance only and illustration purposes only and may not be to scale. If there are any important matters likely to affect your decision to buy, please contact us before viewing the property.