

Temple Row  
Birmingham



arca

The building

# arca - on point

A building that offers you more. Encouraging original thinking and individuality.

Arca features a double height lobby/reception which extends into a circular glazed façade. Arranged over 10 floors, the building provides up to 65,000 sq ft of newly refurbished high quality Grade A office space, available as Cat A space so you can work the way you want to and the 7th floor delivered fully fitted for those who want to get straight to work.



or



Cat A  
flexible  
floorplates

7th floor  
ready to go -  
fully fitted space



# beyond the curve

A welcoming arrival experience has been created, with refined design features and stylish occupier lounge.

The reception interior has been completely remodelled and enhanced to provide an impressive welcome to occupiers and visitors.



# All things considered

BREEAM®

Excellent targeted  
to refurbished floors

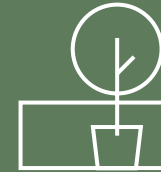


Targeting EPC  
rating B



WiredScore

Targeting  
Platinum



Communal external  
terrace



BCO cycle provision for  
98 secure cycling spaces



13 showers with male, female  
and accessible changing  
room facilities



Locker room with  
112 lockers



Communal meeting room  
on 6th floor with access  
to terrace



Access to rail stations,  
trams and buses nearby



Demand Logic - energy  
consumption monitoring

# Step outside

The spacious 6th floor roof terrace provides the ideal environment for meeting and entertaining, or to simply relax and unwind.



# Design in the detail



Highly visible site location overlooking St Philip's Cathedral



Double height reception, opening onto Temple Row



Reception meeting lounge



1:10 sq m office occupational density



Flexible floor plates from 1,849 sq ft



Dedicated risers and external plant space for tenant fit-out



2 x passenger lifts



Raised floors



Ceilings with exposed services



LED lighting with automatic sensors



Car parking spaces available



Communal WiFi



Clear floor-to-ceiling heights of c3.18m



New VRF air conditioning



Excellent natural light

# A fresh start

New changing facilities provide a seamless end to your commute, so you can be ready to start your working day feeling fresh.



# Arrive in style

The end-of-journey bike store offers space for up to 98 cycles, with efficient, easily accessed rack space so they can be securely stored.





# don't stay in line

Workspaces to encourage productivity and keep you ahead of the competition. Whether you need fully fitted that's ready for work, or a space to make your own, we've got you covered.

# Step inside

The Cat A floors provide a flexible space that's ready for you to make your own, filled with natural light and floor to ceiling glazing.



Fully fitted floor CGI

# Ready for work

The 7th floor is being fully fitted to provide an open workspace that's ready for you to hit the ground running.



# Accommodation

## Schedule of areas

Floor	Condition	sq ft	sq m
9th	Cat A	1,856	172
8th	Cat A	5,524	513
7th	Fully Fitted	5,470	508
6th	Cat A	4,980	463
5th	Let	Let	–
4th	Cat A	8,817	819
3rd	Cat A	8,791	817
2nd	Cat A	14,465	1,344
1st	Let	Let	–
Ground	Cat A	14,662	1,362
<b>Total</b>		<b>64,565</b>	<b>5,998</b>

\* Areas subject to final measurement in accordance with RICS code of measuring practice.

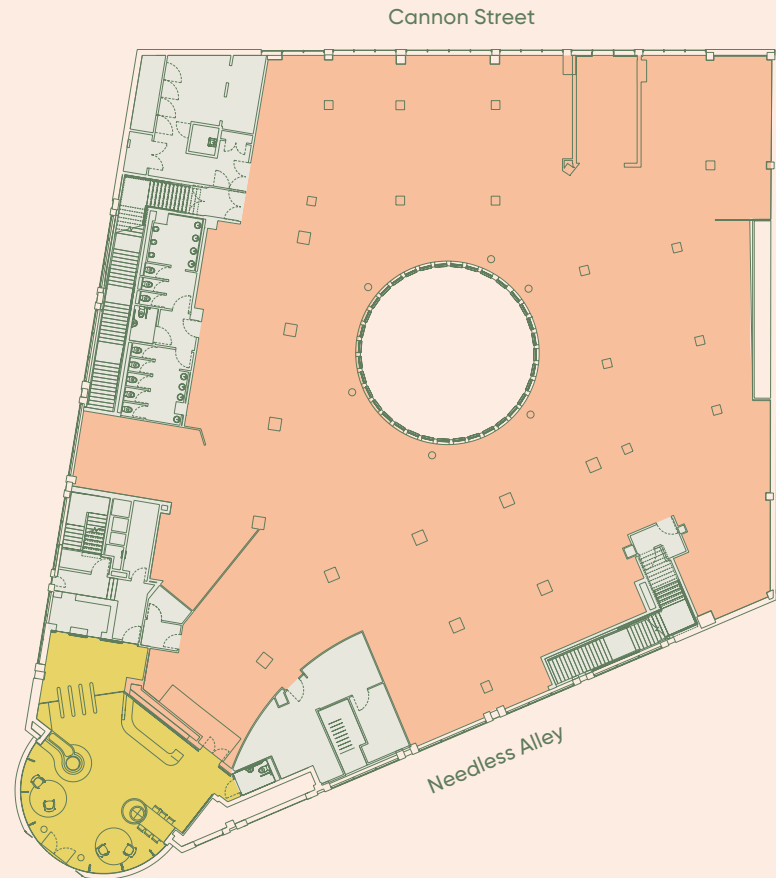
- Office
- Reception
- Core



For indicative purposes only.  
Not to scale.

## Ground floor

14,662 sq ft / 1,362 sq m



# Accommodation

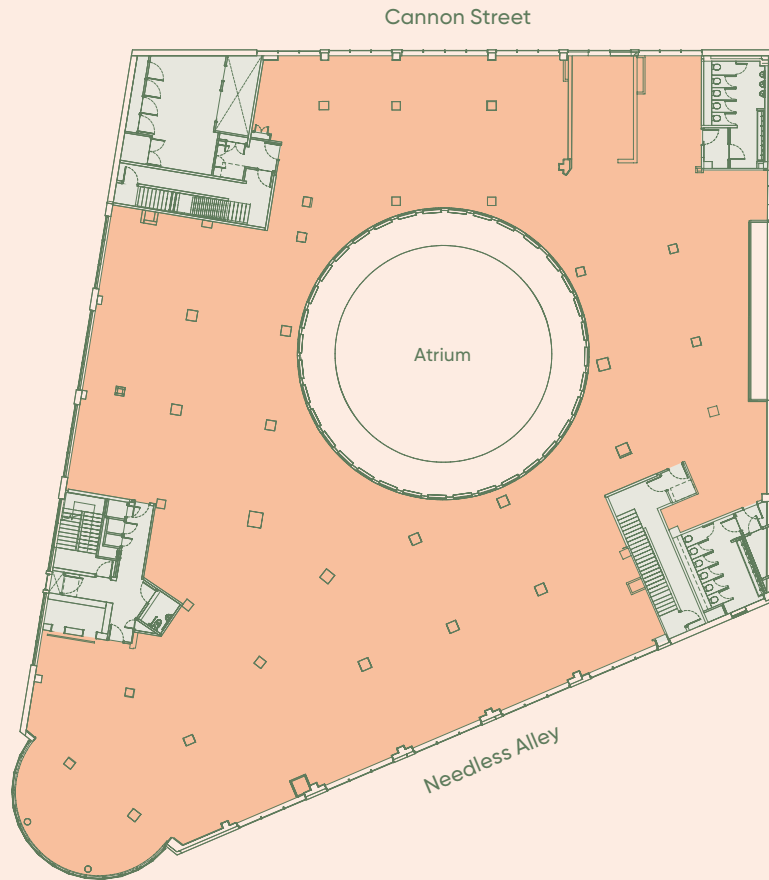
- Office
- Core



For indicative purposes only.  
Not to scale.

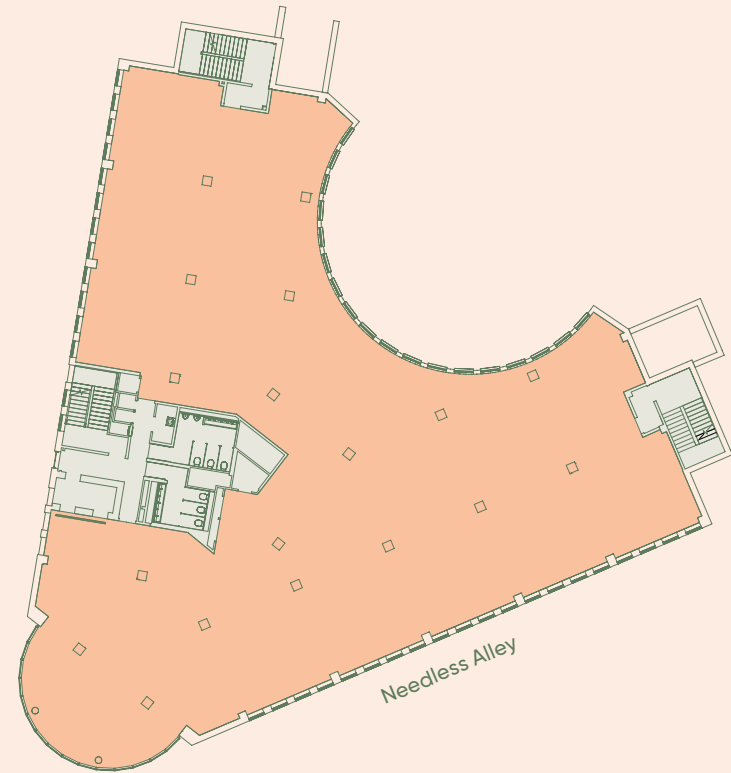
## 2nd floor

14,465 sq ft / 1,344 sq m



## 4th floor

8,817 sq ft / 819 sq m



# Accommodation

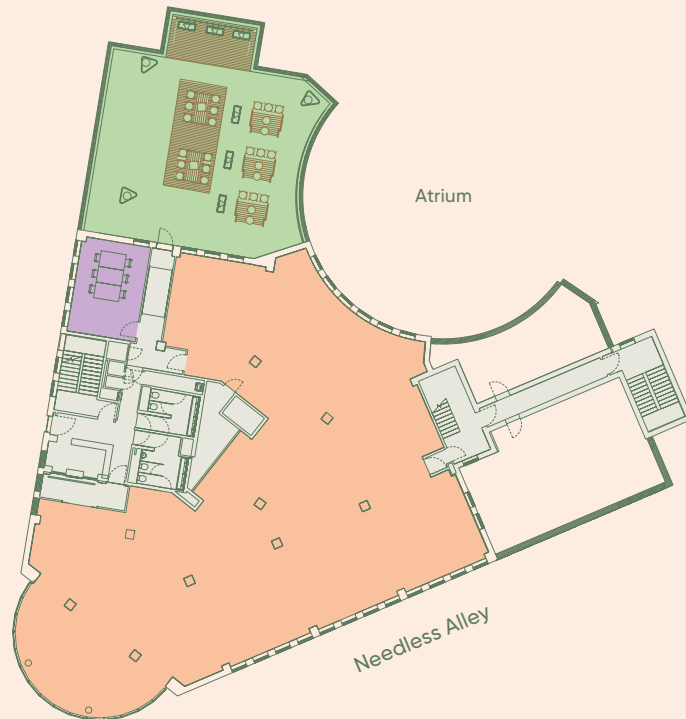
- Office
- Core
- Terrace
- Communal meeting room



For indicative purposes only.  
Not to scale.

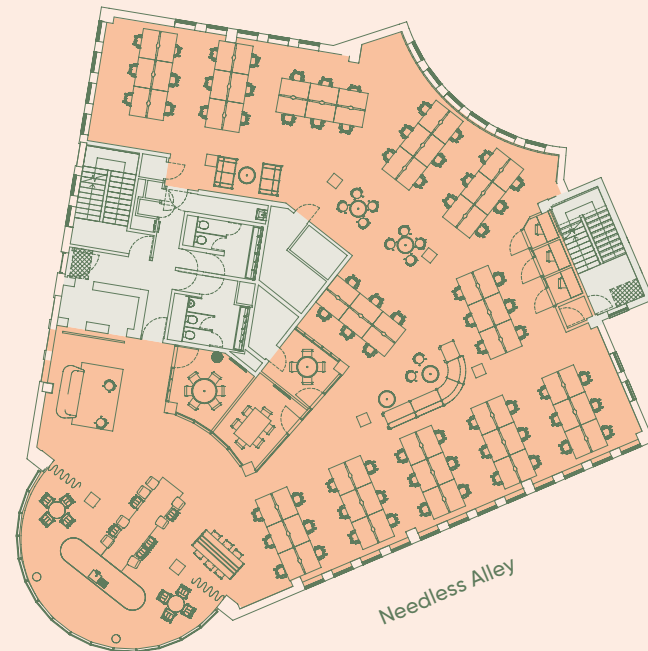
## 6th floor

4,980 sq ft / 463 sq m



## 7th floor

5,470 sq ft / 508 sq m



Open plan desks	72
4 person meeting room	01
6 person meeting rooms	02
Phone booths	03
Kitchen	01
Breakout areas	04
<b>Total working positions</b>	<b>72</b>

# Accommodation

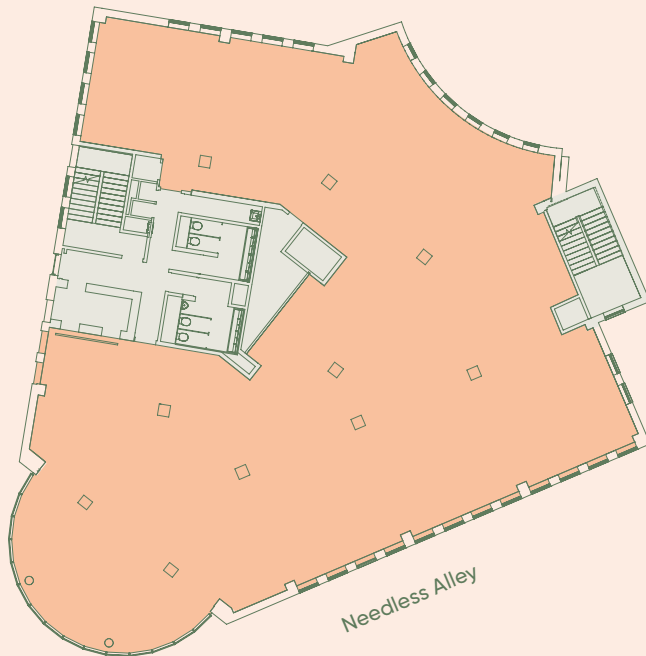
- Office
- Core



For indicative purposes only.  
Not to scale.

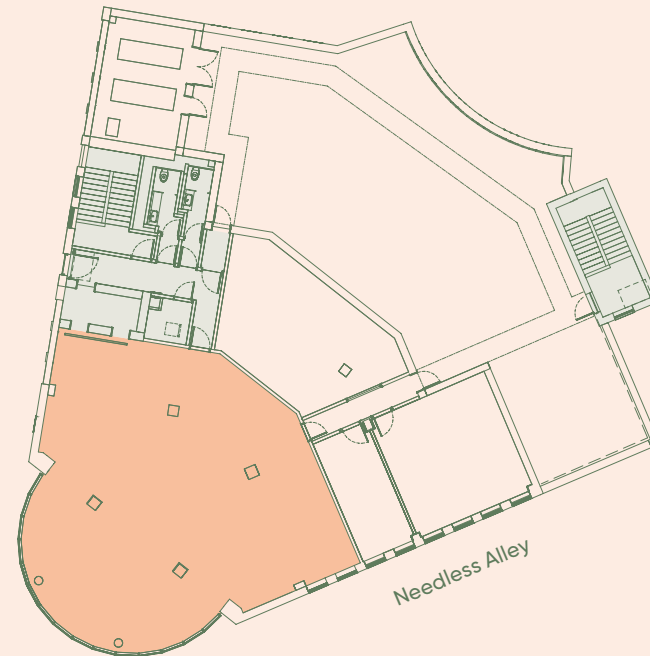
## 8th floor

5,524 sq ft / 513 sq m



## 9th floor

1,856 sq ft / 172 sq m



A desirable location is key to attracting and retaining the best people, with enviable connections and exceptional amenities, this is an area that has it all.



movers and shakers



## Location

# A central destination

Arca is at a prime location on Temple Row, with impressive views across St. Philip's Cathedral & Square.

The building's unique location provides unparalleled access to Birmingham's city centre and retail quarter, with Birmingham's major stations and metro all within an eight minute walk.



### Images

- 1\_ St Philip's Cathedral
- 1\_ Birmingham Metro
- 3\_ Grand Central
- 4\_ Shopping at the Bullring

### Walk times to transport hubs from arca

**2**  
mins



Corporation Street  
Metro Stop

**3**  
mins



Birmingham  
New Street Station

**3**  
mins



Birmingham  
Snow Hill Station

**8**  
mins



Birmingham  
Moor Street Station

Walk times taken from Google.

Location

# Spoilt for choice

Birmingham is known for its rich and diverse amenity mix – all within easy reach of arca.

High end retail brands and independent boutiques are abundant for those who want a spot of retail therapy, whilst the social scene features celebrated independent bars and restaurants as well as Michelin starred favourites.



Images

- 1\_ Morridge
- 2\_ Birmingham Library
- 3\_ The Ivy Brasserie
- 4\_ Paradise
- 5\_ Great Western Arcade
- 6\_ The Alchemist



For those who fancy a spot of Culture, the City features a number of high profile galleries, theatres and public spaces including The Birmingham Library, Utilita Arena and Symphony Hall.

The Mailbox is another must-see destination, home to the BBC studios as well as a host of experiences centred around digital creativity.

Location

# Amenities / occupiers

**Restaurants**

- 1 Tattu
- 2 Isaacs
- 3 Gaucho
- Birmingham
- 4 Asha's
- 5 Land Restaurant
- 6 Sushi Passion
- 7 Folium
- 8 Opheem
- 9 Original
- Patty Men
- 10 Otto
- 11 Indian Brewery
- 12 Lasan
- 13 Hen & Chickens
- 14 Pasta Di Piazza
- 15 Gusto
- 16 Fazenda

**Retail / leisure**

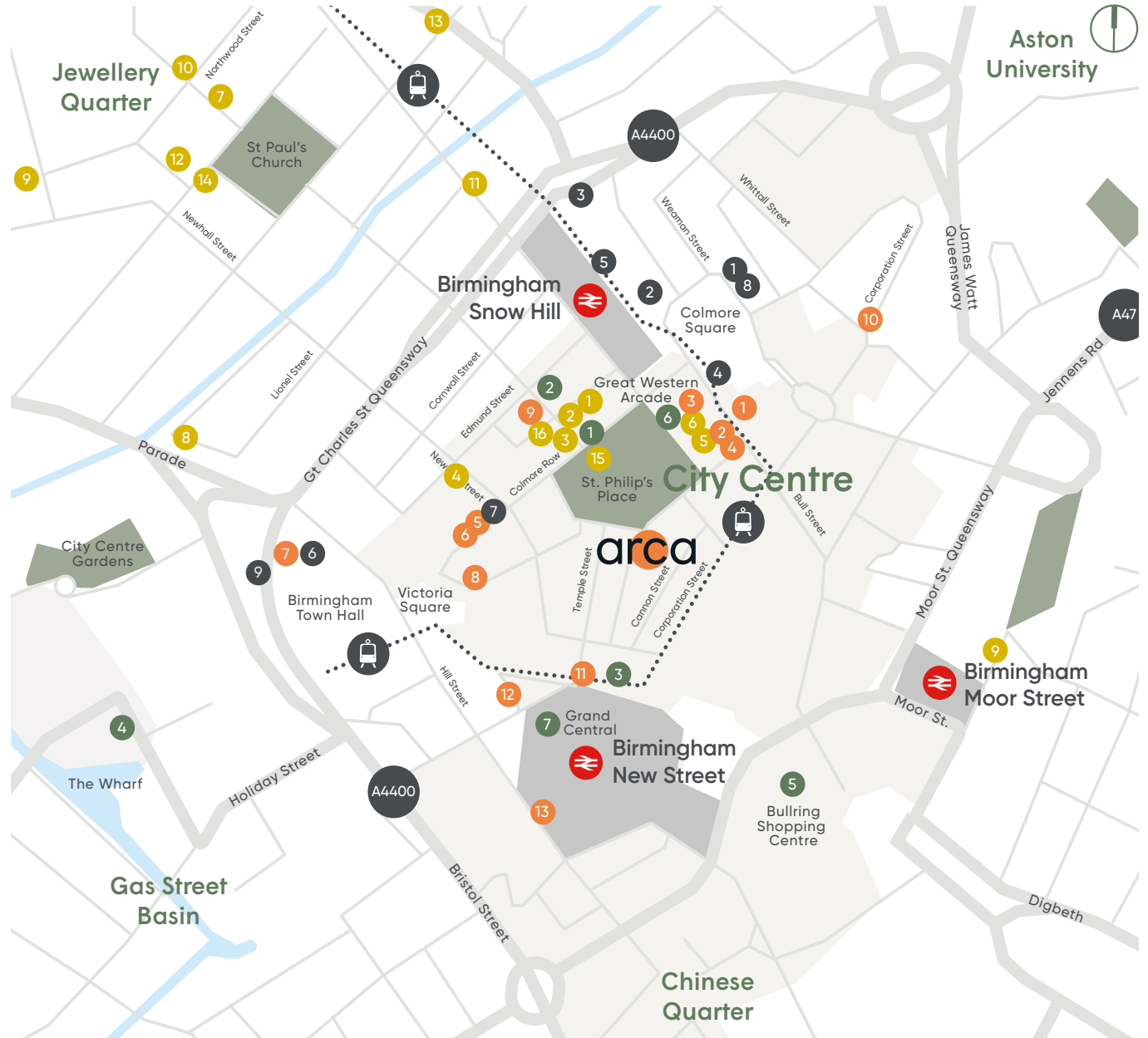
- 1 The Grand
- 2 Hotel Du Vin
- 3 Burlington Hotel
- 4 The Hyatt
- 5 Bullring Shopping Centre
- 6 Great Western Arcade
- 7 Grand Central

**Cafés and bars**

- 1 Waylands Yard
- 2 Pineapple Club
- 3 Loki
- 4 Morridge
- Oats + Coffee
- 5 Henman & Cooper
- 6 The Colmore
- 7 Albert Schloss
- 8 Pure Bar
- 9 The Roebuck
- 10 Boston Tea Party
- 11 Tonight Josephine
- 12 Yorks Café
- 13 Bonehead

**Occupiers**

- 1 Amey
- 2 Barclays, KPMG
- 3 BT
- 4 EY
- Shakespeare Martineau
- 5 HS2
- Gowling WLG
- 6 PwC
- 7 Grant Thornton
- 8 Investec
- Rathbone IM
- 9 Goldman Sachs



# Further information

A refurbishment by

# Oval

## Viewings

Strictly through joint  
letting agents.

## Terms

Upon application.

# CBRE

**Theo Holmes**  
07967 802 656  
theo.holmes@cbre.com

**Brooke Matthews**  
07387 128 735  
brooke.matthews@cbre.com



**Scott Rutherford**  
07824 436 439  
scott.rutherford@cushwake.com

**Callum Gilbert**  
07766 120 682  
callum.gilbert@cushwake.com

# arca.work

Misrepresentations Act 1967 – Whilst all the information in this brochure is believed to be correct, neither the agent nor the client guarantee its accuracy nor is it intended to form any part of any contract. All areas quoted are approximate. All building images are computer generated. June 2023.

Designed by Cre8te – 020 3468 5760 – cre8te.london