

751 Warwick Road

Solihull B91 3DQ



Design to build office accommodation

External CGI

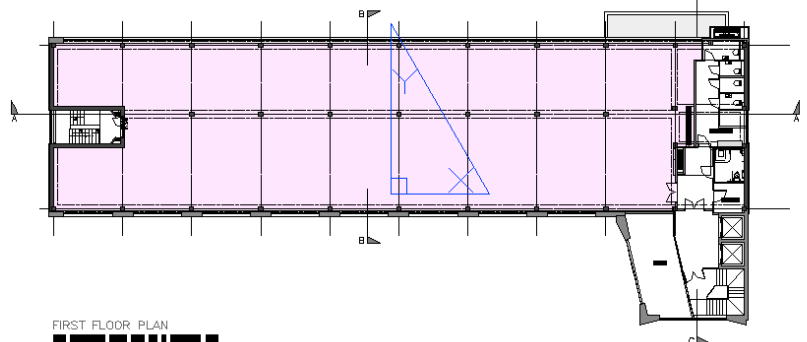


751 Warwick Road is located in Solihull Town Centre and is a 5 minute walk to Solihull Train Station and its links to Birmingham City Centre and the Airport. The building was purpose built in 1978 as a headquarters office building, and was recently acquired for redevelopment. The building currently comprises of c.20,000 sq ft of open plan office space. A planning application is currently being prepared for Grade A office refurbishment.

Availability

Floor	Sq Ft (approx.)	Sq Mt (approx.)
2nd	6600	613
1st	6600	613
Gnd	6600	613
Total	19,800	1,839

Typical Floorplate



CONTACT US

WILLIAM VENTHAM

+44 121 616 5509
+44 7786 236 090
william.ventham@cbre.com

KATIE HORTON

+44 121 616 5595
+44 7501 773 554
katie.horton@cbre.com

OFFICES

751 Warwick Road

Solihull B91 3DQ

Location



Internal Floorplate

Specification

- Town centre location
- Close proximity to Solihull Train station and Birmingham Airport
- Self contained accommodation
- Grade A office specification
- Open plan floorplates
- On site car parking

7th December 2020 CBRE, Inc. This information has been obtained from sources believed reliable. We have not verified it and make no guarantee, warranty or representation about it. Any projections, opinions, assumptions or estimates used are for example only and do not represent the current or future performance of the property. You and your advisors should conduct a careful, independent investigation of the property to determine to your satisfaction the suitability of the property for your needs.

Photos herein are the property of their respective owners and use of these images without the express written consent of the owner is prohibited.