

Office For Lease

CBRE

Colmore Tang House

Broadway, Broad Street, Birmingham, B15 1BJ

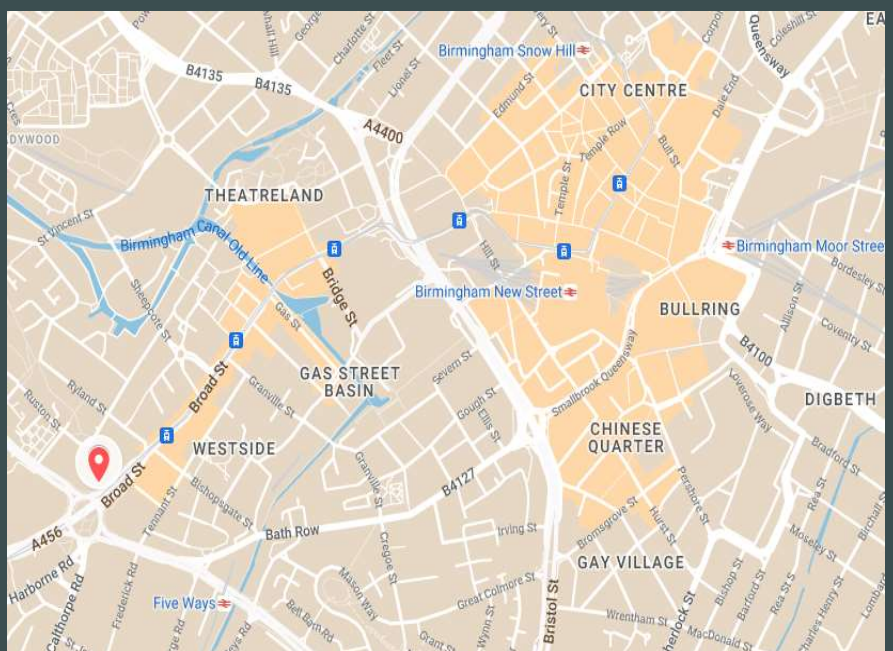


External Image

Location

Colmore Tang House is situated on Fiveways Island and is ideally positioned to allow easy access to the City Centre. It is situated inside the inner ring road and is in walking distance from Birmingham's train stations. The Five Ways Metro Stop is located just in front of the property providing access to Edgbaston Village and the city centre.

The standalone building provides a state-of-the-art headquarters office building with excellent signage rights due to the property's prime position fronting Fiveways Island.



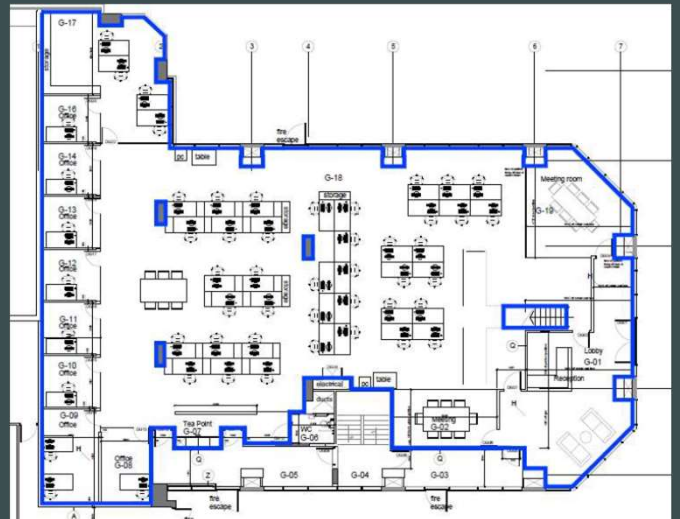
Specification

- Air Conditioning
- LED Lighting
- Open Plan Offices
- Reception
- Breakout Areas
- Partitioned Meeting Rooms/ Offices
- Server Room
- Kitchen
- Fully Cabled
- Access control
- Ample Parking



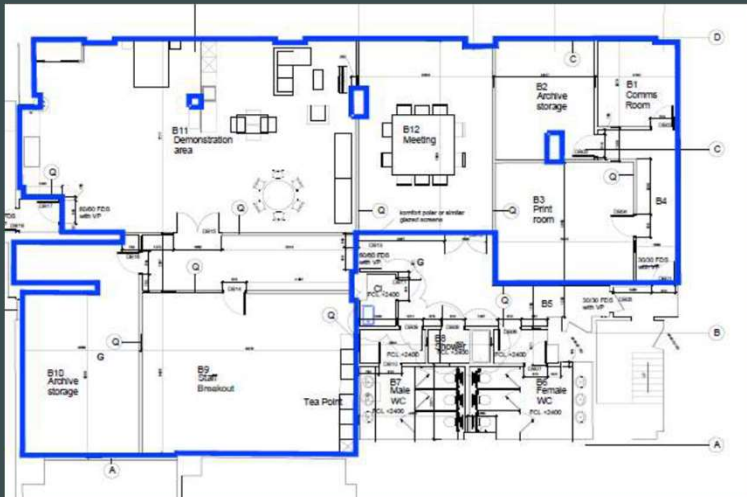
Accommodation

Floor	Sq Ft	Sq Mt
Basement	3,401	316
Ground	5,468	508
1st	2,583	240
Total	11,453	1,064

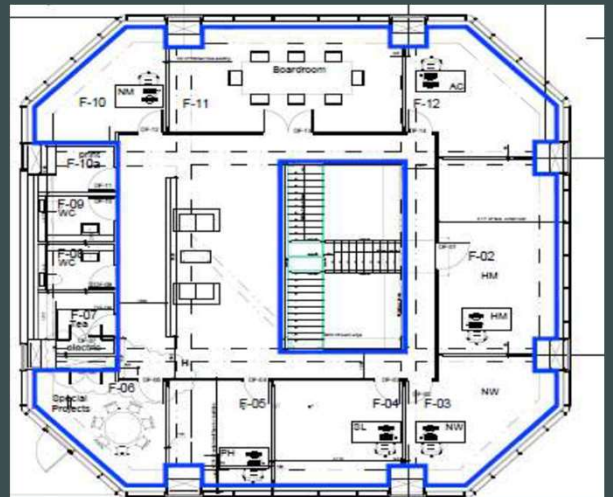


Ground Floor

Floorplans



Basement



First Floor

Colmore Tang House

Terms

Rent
POA

Service Charge
Full Repairing and Insuring lease with an additional estate's charge.

Lease Terms
The accommodation is available on a new lease directly from the Landlord.

Rates
Interested parties are advised to make their own enquiries with Birmingham City Council.

EPC
Available upon request.

Legal Fees
Each party is to bear their own costs.



Board Room



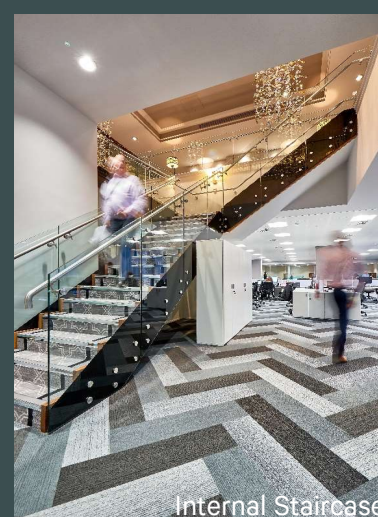
Kitchen/ Breakout area



Internal Meeting Room



WC's



Internal Staircase

Contact Us

Theo Holmes
Theo.holmes@cbre.com
07967 802 656

Brooke Matthews
Brooke.matthews@cbre.com
07387 128 735

© 2023 CBRE, Inc. All rights reserved. This information has been obtained from sources believed reliable, but has not been verified for accuracy or completeness. You should conduct a careful, independent investigation of the property and verify all information. Any reliance on this information is solely at your own risk. CBRE and the CBRE logo are service marks of CBRE, Inc. All other marks displayed on this document are the property of their respective owners, and the use of such logos does not imply any affiliation with or endorsement of CBRE. Photos herein are the property of their respective owners. Use of these images without the express written consent of the owner is prohibited.

CBRE