

# ENTERPRISE WHARF

More than just a work space.

ENTER

bruntwood  
SciTech



## 01 Location

In the heart of Birmingham's Knowledge Quarter, a stone's throw from Aston and Birmingham City Universities



## 02 Our network

Access the talent, finance, markets and network your business needs



## 03 Property

Bruntwood SciTech's £30m, 120,000 sqft new building, the first in Birmingham to be smart-enabled.



## 04 Your community

A sector-specialist cluster of 150+ tech businesses in Birmingham





## LOCATION

### INNOVATION DISTRICT

## OUR NETWORK

### KEY FACTS

## PROPERTY

### MAP

## YOUR COMMUNITY

### INNOVATION BIRMINGHAM

## LOCATION

Innovation Birmingham is the region's leading digital tech campus where businesses thrive. Home to a community of over 150 digital innovators, investors, start-ups and global businesses, It's more just than a place to work. It's a place which fosters knowledge-sharing and the connecting of public and private sector expertise.

Located in the heart of Birmingham's Knowledge Quarter close to Aston and Birmingham City Universities, the campus is a short walk from Colmore Business District, Snow Hill and New Street Stations.

At Enterprise Wharf, you'll be in the centre of Birmingham's innovation district, amidst a vibrant digital community where specialisms include fintech, edtech, greentech and AI.





## LOCATION

### INNOVATION DISTRICT

## OUR NETWORK

### KEY FACTS

## PROPERTY

### MAP

## YOUR COMMUNITY

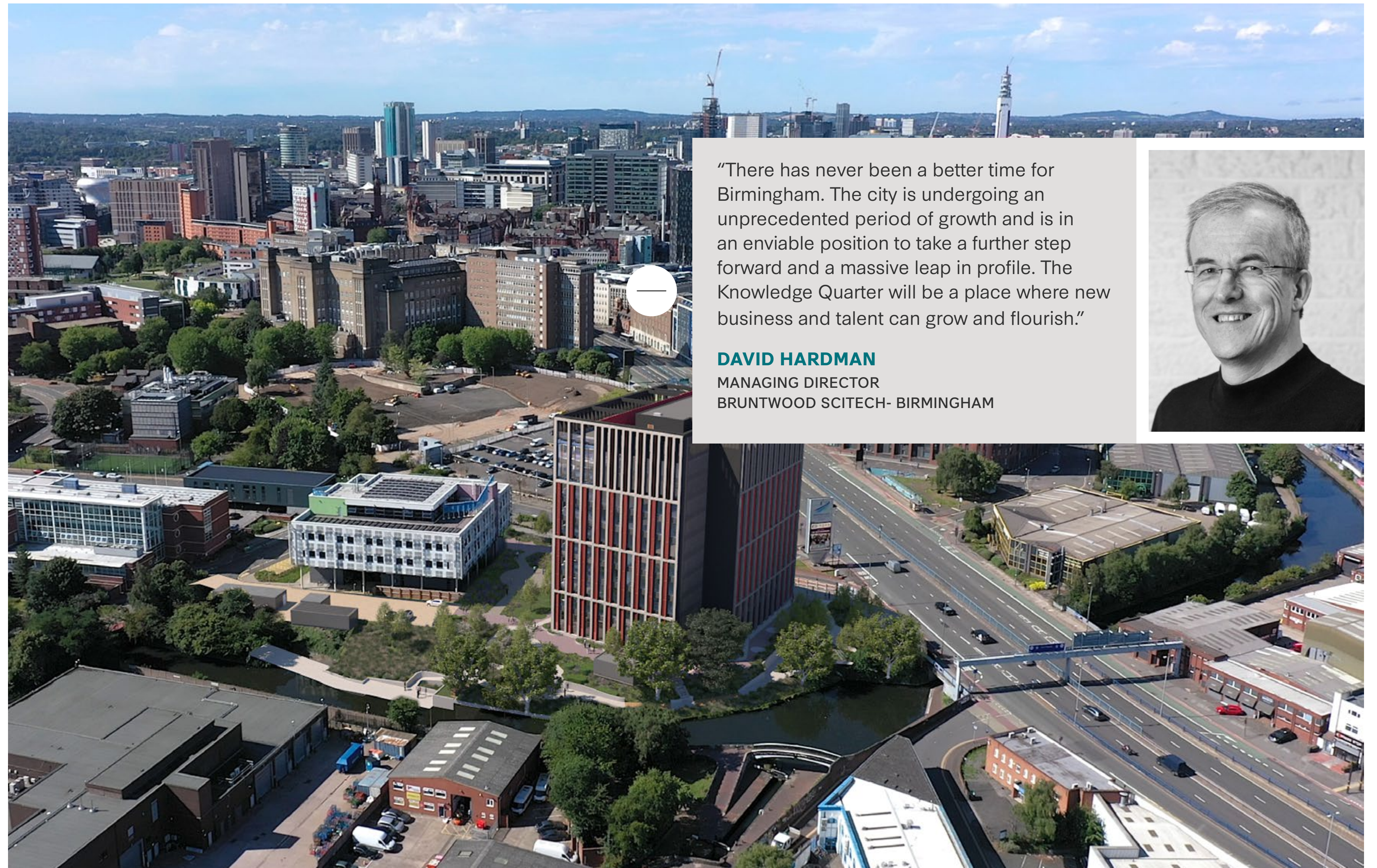
### INNOVATION BIRMINGHAM

## LOCATION

Innovation Birmingham is the region's leading digital tech campus where businesses thrive. Home to a community of over 150 digital innovators, investors, start-ups and global businesses, it's more than just a place to work. It's a place which fosters knowledge-sharing and the connecting of public and private sector expertise.

Located in the heart of Birmingham's Knowledge Quarter close to Aston and Birmingham City Universities, the campus is a short walk from Colmore Business District, Snow Hill and New Street Stations.

At Enterprise Wharf, you'll be in the centre of Birmingham's innovation district, amidst a vibrant digital community where specialisms include fintech, edtech, greentech and AI.



"There has never been a better time for Birmingham. The city is undergoing an unprecedented period of growth and is in an enviable position to take a further step forward and a massive leap in profile. The Knowledge Quarter will be a place where new business and talent can grow and flourish."

**DAVID HARDMAN**  
MANAGING DIRECTOR  
BRUNTWOOD SCITECH- BIRMINGHAM





# ENTERPRISE WHARF

CONTACT

LOCATION

OUR NETWORK

PROPERTY

YOUR COMMUNITY

**INNOVATION DISTRICT**

KEY FACTS

MAP

**INNOVATION BIRMINGHAM**

## B:KQ THE KNOWLEDGE QUARTER

B:KQ is home to the city's academic and cultural institutions, including Aston and Birmingham City Universities, Birmingham City Council and National College of Advanced Transport and Infrastructure (NCATI). It is here that innovators and entrepreneurs commercialise groundbreaking innovations. It's a community that delivers; not just on ideation, innovation, and invention, but also contributes £210m GVA per annum.

Businesses based in B:KQ benefit from proximity to leading academic research. The steady stream of talent from the city's colleges and universities bolsters the ability of businesses to achieve rapid growth through accelerated skills development and training programmes.





[LOCATION](#)[OUR NETWORK](#)[PROPERTY](#)[YOUR COMMUNITY](#)[INNOVATION DISTRICT](#)[KEY FACTS](#)[MAP](#)[INNOVATION BIRMINGHAM](#)

## TECHNOLOGY OF TOMORROW

Innovation Birmingham is part of the West Midlands 5G testbed and is also home to 5spring, a unique 5G accelerator and open innovation platform. Delivered by Telefonica UK (O2), Wayra, Digital Catapult and West Midlands 5G working with startups, sector experts and enterprise organisations to transform the way we live and work by leveraging the power of 5G.

By choosing Enterprise Wharf you'll not only benefit from being based in a 5G enabled building, but be colocated with the region's most disruptive tech companies experimenting with 5G features that are not yet commercially available.





# ENTERPRISE WHARF

CONTACT

LOCATION

OUR NETWORK

PROPERTY

YOUR COMMUNITY

**INNOVATION DISTRICT**

KEY FACTS

MAP

**INNOVATION BIRMINGHAM**

## UNIVERSITIES

The West Midlands region boasts some of the finest tech academies in the country. 12 universities are home to 50 tech-related centres of excellence, producing 70,325 graduates per year, 16,000 of which gain fintech related degrees and qualifications.

Employment opportunities for tech graduates within the West Midlands are strong, with tech roles accounting for 14% of roles advertised. This, coupled with the region's young and diverse population, central location, excellent transport links, and lower living costs make it an attractive proposition for graduates looking for employment after university. Many choose to stay on in the region, creating a larger tech talent pool than can be found in many other UK cities.





[LOCATION](#)[OUR NETWORK](#)[PROPERTY](#)[YOUR COMMUNITY](#)[INNOVATION DISTRICT](#)[KEY FACTS](#)[MAP](#)[INNOVATION BIRMINGHAM](#)

## OPEN-INNOVATION

Our Serendip open-innovation programme is a pioneering problem-solving partnership. Serendip is a challenge-led environment where market needs spark innovations that deliver new products and services. By co-locating promising start-ups with large commercial and public sector partners, which have included West Midlands Academic Health Science Network, Barclays Eagle Labs, HS2, Gymshark and National Express, the programme helps entrepreneurs gain access to new markets, commercial opportunities and potential investment.

Serendip has a proven track record and is widely recognised for its successful innovation programme within the region. Its numbers speak for themselves. A recent programme generated £1m total funding, 90 growth activities, 80 commercial activities, 8 commercial trials and £216k commercial contracts.



[LOCATION](#)[OUR NETWORK](#)[PROPERTY](#)[YOUR COMMUNITY](#)[INNOVATION DISTRICT](#)[KEY FACTS](#)[MAP](#)[INNOVATION BIRMINGHAM](#)

## THRIVING COMMUNITY

Situated opposite the picturesque, tree-lined green of Aston University, Enterprise Wharf is a short walk from a number of bars, restaurants and pubs.

It is also close to the site of the future HS2 Curzon Street Station and a number of exciting residential developments currently underway in the city, including those close to Curzon Street, in Digbeth and the Jewellery Quarter.

The location of Enterprise Wharf will make it an attractive proposition to young professionals, offering a desirable place to live, work and play, fully connected to London and the rest of the UK. Expect to see Friday night cocktails along the canalside in the not to distant future.





# ENTERPRISE WHARF

CONTACT

LOCATION

INNOVATION DISTRICT

OUR NETWORK

KEY FACTS

PROPERTY

MAP

YOUR COMMUNITY

INNOVATION BIRMINGHAM

## BIRMINGHAM

UK'S LEADING  
COMPUTER SCIENCE  
UNIVERSITY

University of Birmingham

UK'S LEADING  
REGIONAL HUB

for Connected & Autonomous  
Vehicles, Internet of Things,  
FinTech, Cyber and e-commerce

40 ACCELERATORS  
AND INCUBATORS

offer access to professional, commercial  
and financial support for startups

16,000 FINTECH  
GRADUATES

per annum across West Midlands  
region, with 70% retention

ATTRACTING MORE  
FOREIGN DIRECT  
INVESTMENT PROJECTS

than any city outside London

UK'S No.1 REGION  
for innovation companies creating over  
63K TECH SECTOR JOBS

GREATEST NUMBER  
OF SOFTWARE  
DEVELOPERS

and software architects than  
any other UK region

FUTURE HS2 HUB

REGIONAL START  
UP CAPITAL

for 7 years running





# ENTERPRISE WHARF

CONTACT

## LOCATION

## OUR NETWORK

## PROPERTY

## YOUR COMMUNITY

### INNOVATION DISTRICT

### KEY FACTS

### MAP

### INNOVATION BIRMINGHAM

## KEY KNOWLEDGE QUARTER LOCATIONS

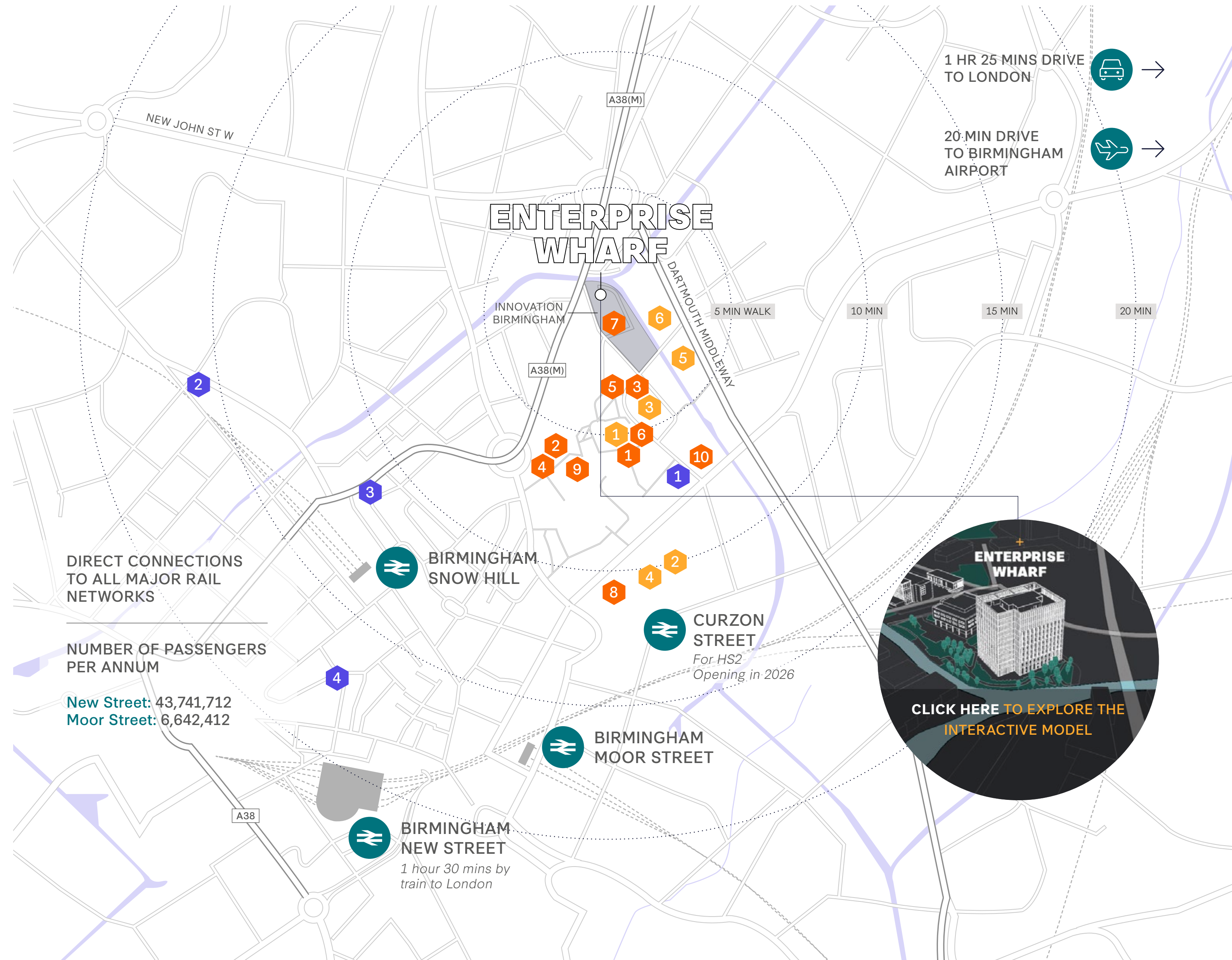
- Aston University 1
- Birmingham City University 2
- Birmingham City Council 3
- Millennium Point 4
- National College for Advanced Transport and Infrastructure 5
- Aston University Engineering Academy 6

### Local Amenities

- Aston Conference Centre 1
- Costa Coffee 2
- Gosta Green Pub 3
- Greggs 4
- Sacks Of Potatoes 5
- Sir Doug Ellis Woodcock Sports Centre/Gym 6
- Six Degrees Cafe 7
- Subway 8
- Tesco 9
- The Black Horse 10

### Hotels

- Aloft Birmingham 1
- Hampton by Hilton 2
- Holiday Inn Express 3
- Premier Inn 4





# ENTERPRISE WHARF

CONTACT

LOCATION

OUR NETWORK

PROPERTY

YOUR COMMUNITY

INNOVATION DISTRICT

KEY FACTS

MAP

**INNOVATION BIRMINGHAM**

## INNOVATION BIRMINGHAM

The Innovation Birmingham campus currently includes Faraday Wharf, Universities Centre and iCentrum, the hub of the campus which offers events space, meeting rooms and cafe. Our masterplan for the growth of the campus provides for over 300,000 sq ft of growth over the next decade.









LOCATION

**OUR NETWORK**

PROPERTY

YOUR COMMUNITY

BENEFITS

PARTNERS

NATIONAL NETWORK

TRACK RECORD

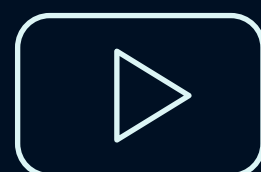
## OUR NETWORK

Through our extensive partner network of universities, city councils, corporate partners, sector leading companies, startups, entrepreneurs and more, we can help your business grow. Through our extensive business support and community program, companies can access events such as our Growth Hub Advice Service, Business Basics and Founder Growth Series, as well as a number of networking and social events. Our active calendar fosters an environment where problem sharing and idea creation is the norm and there is always the opportunity to make new connections. Access to other Bruntwood SciTech locations and events is also available to businesses located on campus.



How we support business.

[Click here to watch our video](#)





LOCATION

OUR NETWORK

PROPERTY

YOUR COMMUNITY

**BENEFITS**

PARTNERS

NATIONAL NETWORK

TRACK RECORD

## ACCESS

### Skills & Talent



Access the skills and talent your business needs through our partner network and links to the city's top universities.



The region's 12 universities are home to 50 tech-related centres of excellence, producing 70,325 graduates per year, 16,000 of which gain fintech related degrees and qualifications.

Our location within the heart of the Knowledge Quarter means that we are perfectly positioned to tap into this, with great access to both Aston and Birmingham City Universities. We also work closely with Warwick University and University of Birmingham, opening the doors to a highly skilled talent pool.

Partner Network



+

Funding & Finance



+



LOCATION

OUR NETWORK

PROPERTY

YOUR COMMUNITY

**BENEFITS**

**PARTNERS**

**NATIONAL NETWORK**

**TRACK RECORD**

## ACCESS

Skills & Talent



Partner Network



Benefit from our unrivalled network of partners and opportunities for collaboration.



Funding & Finance



Discover opportunities to network and grow through our connections, including direct access to SuperTech WM, West Midlands Growth Company, Greater Birmingham and Solihull Local Enterprise Partnership, Innovation Alliance WM, Birmingham Tech, UKSPA, DIT as well as national angel groups and HNWIs.

Or, get involved with supporting STEM talent through Founders4Schools and TechSheCan.

Our established media partnerships also enable access to PR and social media support with industry leading titles such as Wired and UKTN.



LOCATION

OUR NETWORK

PROPERTY

YOUR COMMUNITY

**BENEFITS**

**PARTNERS**

**NATIONAL NETWORK**

**TRACK RECORD**

## ACCESS

Skills & Talent



+

Partner Network



+

Funding & Finance



-

Access to the investors and funds your business needs to grow.

Secure access to investors and funds, including the £250m+ Midlands Engine Investment Fund, and our Investor Showcases.

Business Growth Programme 2 - Provides between £10,001 - £1m to businesses trading for at least six months, for the creation of jobs

Investor Showcase - Meet some of the sector's leading investors, providing start-ups, early growth, and venture stage businesses with an opportunity for targeted introductions

Investor Network - Access to leading investors from Mercia, Midven and Minerva.





# ENTERPRISE WHARF

CONTACT

LOCATION

OUR NETWORK

PROPERTY

YOUR COMMUNITY

BENEFITS

**PARTNERS**

NATIONAL NETWORK

TRACK RECORD

## PARTNERS





# ENTERPRISE WHARF

CONTACT

LOCATION

OUR NETWORK

PROPERTY

YOUR COMMUNITY

BENEFITS

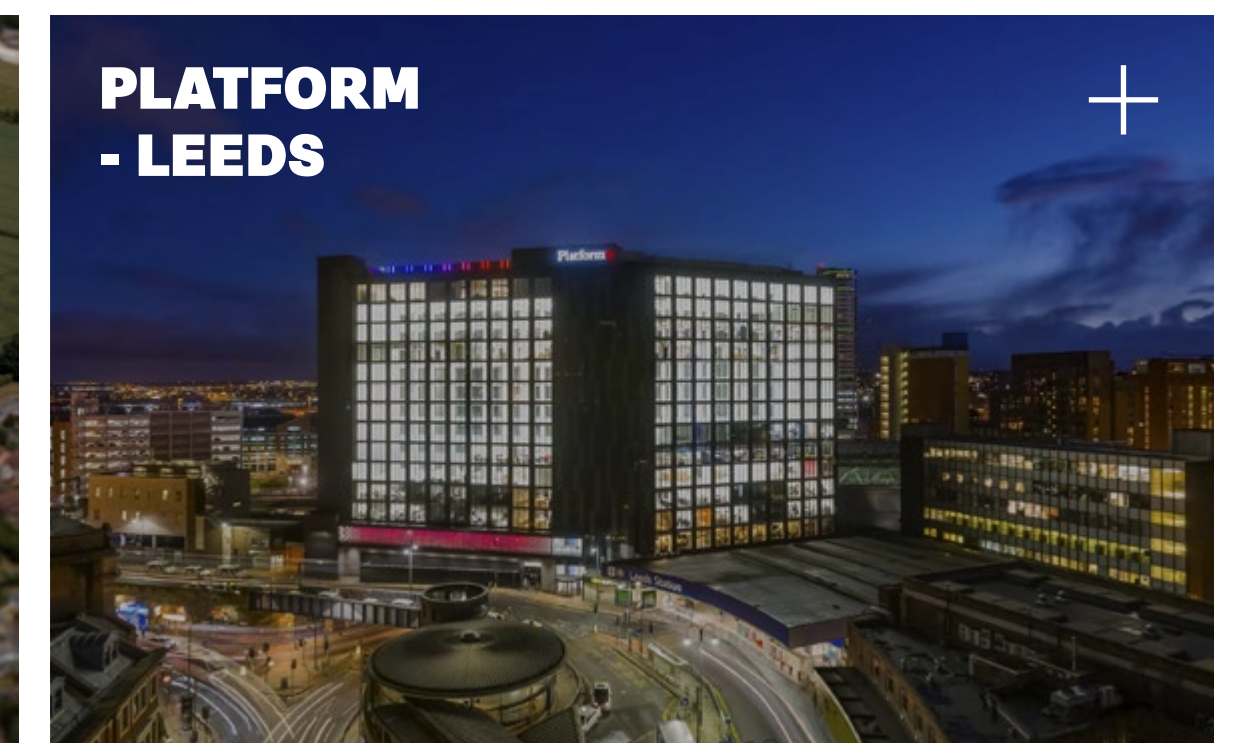
PARTNERS

**NATIONAL NETWORK**

TRACK RECORD

## NATIONAL NETWORK

By locating to Innovation Birmingham you'll be joining and have access to a vibrant, sector-specialist community and national network of over 500 businesses, including disruptive start-ups, fast-growth scale-ups and multinational corporates.





LOCATION

OUR NETWORK

PROPERTY

YOUR COMMUNITY

BENEFITS

PARTNERS

**NATIONAL NETWORK**

TRACK RECORD

## NATIONAL NETWORK

By locating to Innovation Birmingham you'll be joining and have access to a vibrant, sector-specialist community and national network of over 500 businesses, including disruptive start-ups, fast-growth scale-ups and multinational corporates.



### INNOVATION BIRMINGHAM - BIRMINGHAM KNOWLEDGE QUARTER

The Midlands largest hub for tech businesses with space specifically for digital and tech businesses. Close to Aston University and Birmingham City University in the heart of the city's Knowledge Quarter, the campus is home to over 150 forward-thinking companies and is the home of 5pring - part of the West Midlands 5G Accelerator, the HS2 accelerator and the Serendip corporate innovation programme.



### ALDERLEY PARK - CHESHIRE



### LIVERPOOL SCIENCE PARK - KNOWLEDGE QUARTER LIVERPOOL



### MANCHESTER SCIENCE PARK - OXFORD ROAD CORRIDOR



### MELBOURN SCIENCE PARK - CAMBRIDGE



### PLATFORM - LEEDS



LOCATION

OUR NETWORK

PROPERTY

YOUR COMMUNITY

BENEFITS

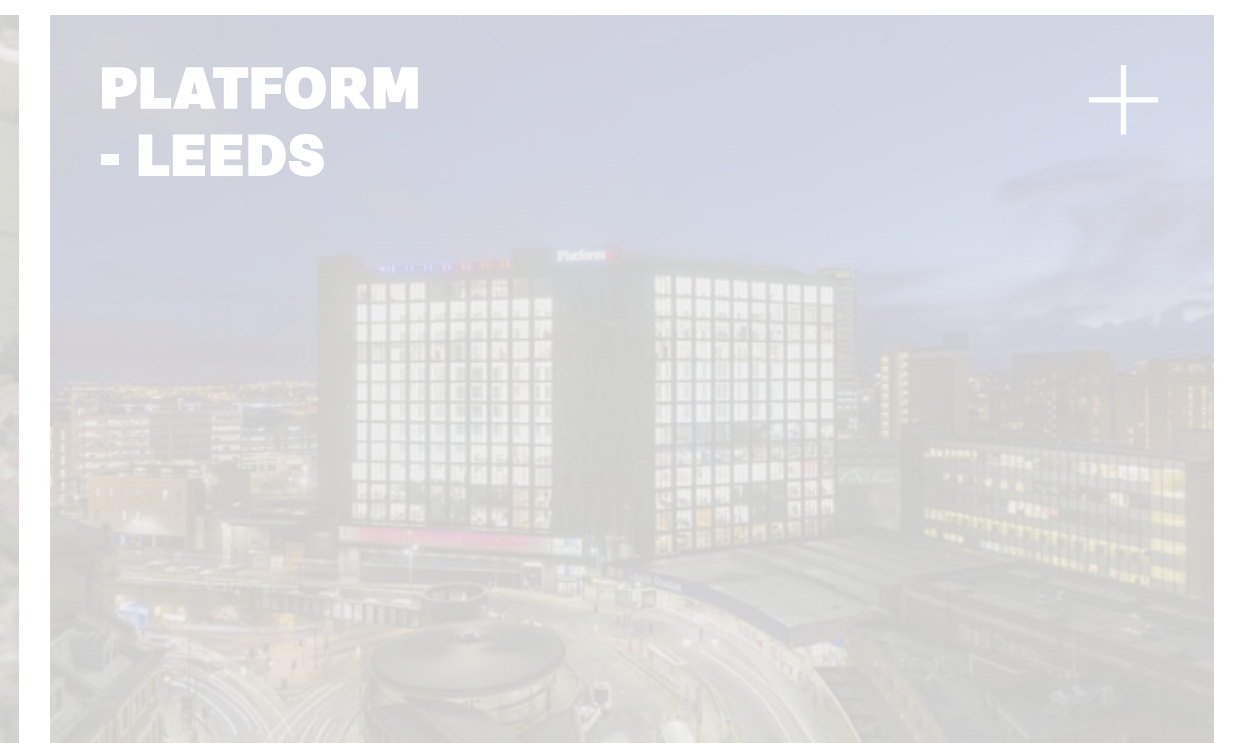
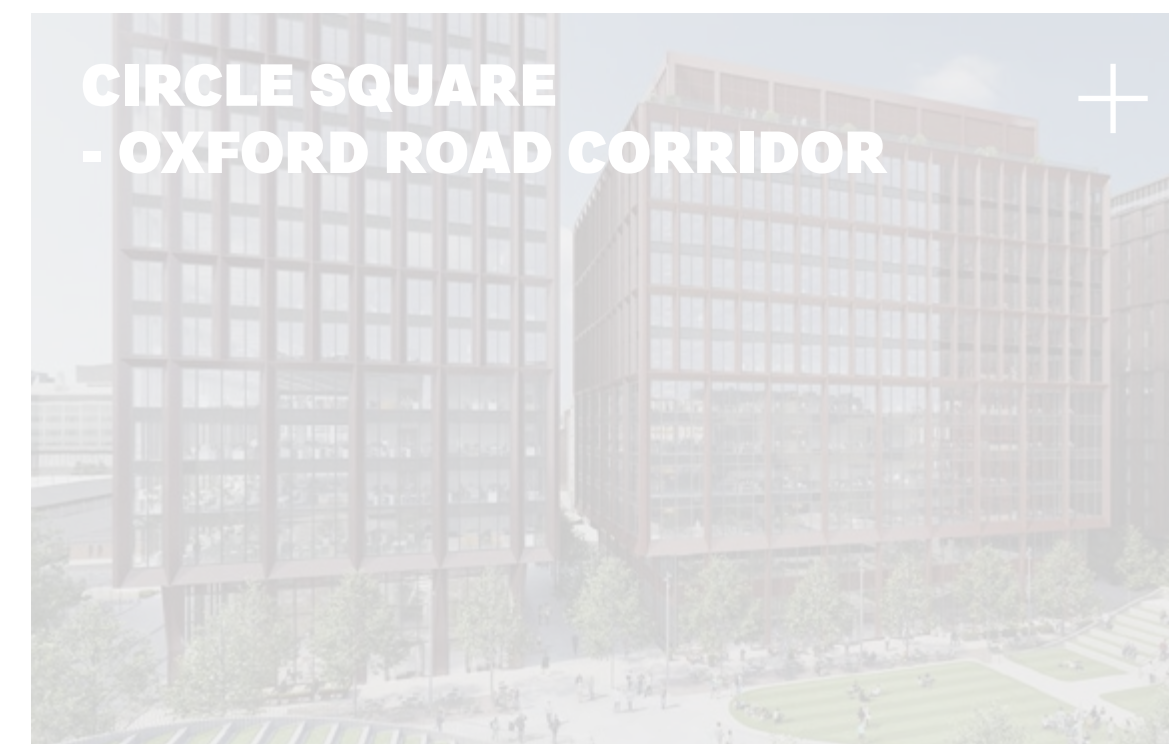
PARTNERS

**NATIONAL NETWORK**

TRACK RECORD

## NATIONAL NETWORK

By locating to Innovation Birmingham you'll be joining and have access to a vibrant, sector-specialist community and national network of over 500 businesses, including disruptive start-ups, fast-growth scale-ups and multinational corporates.





LOCATION

OUR NETWORK

PROPERTY

YOUR COMMUNITY

BENEFITS

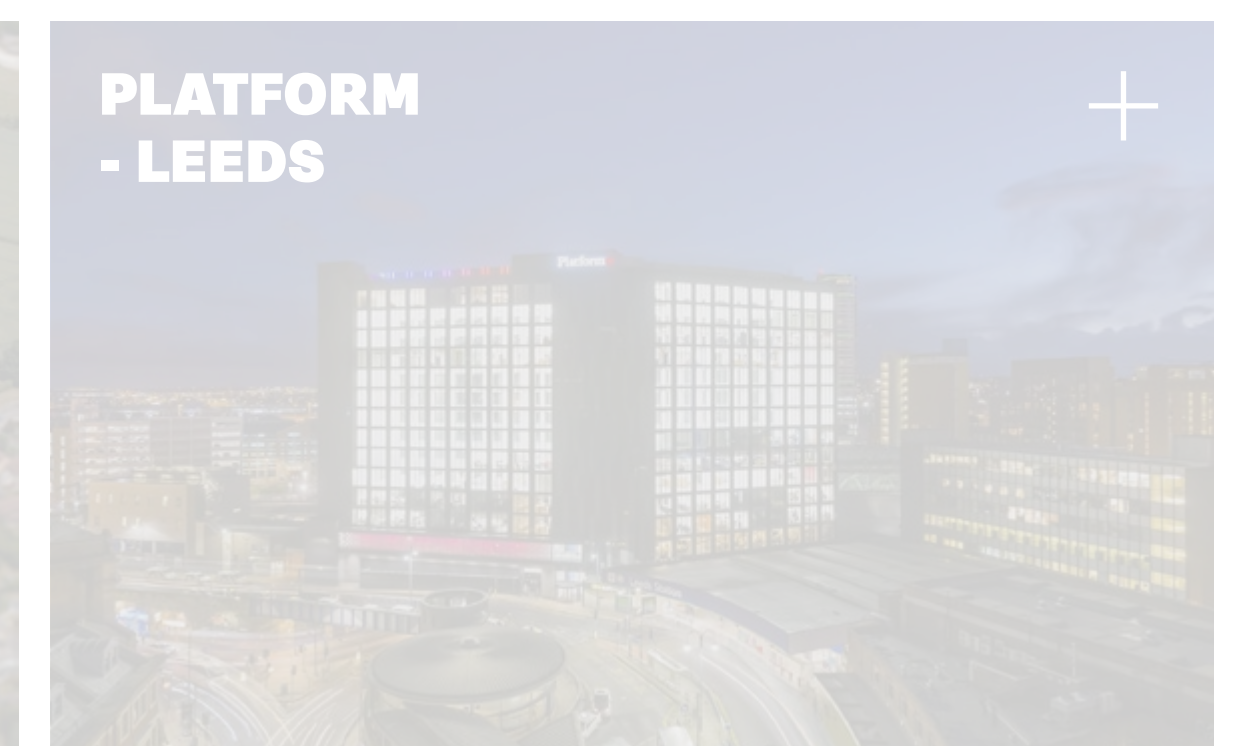
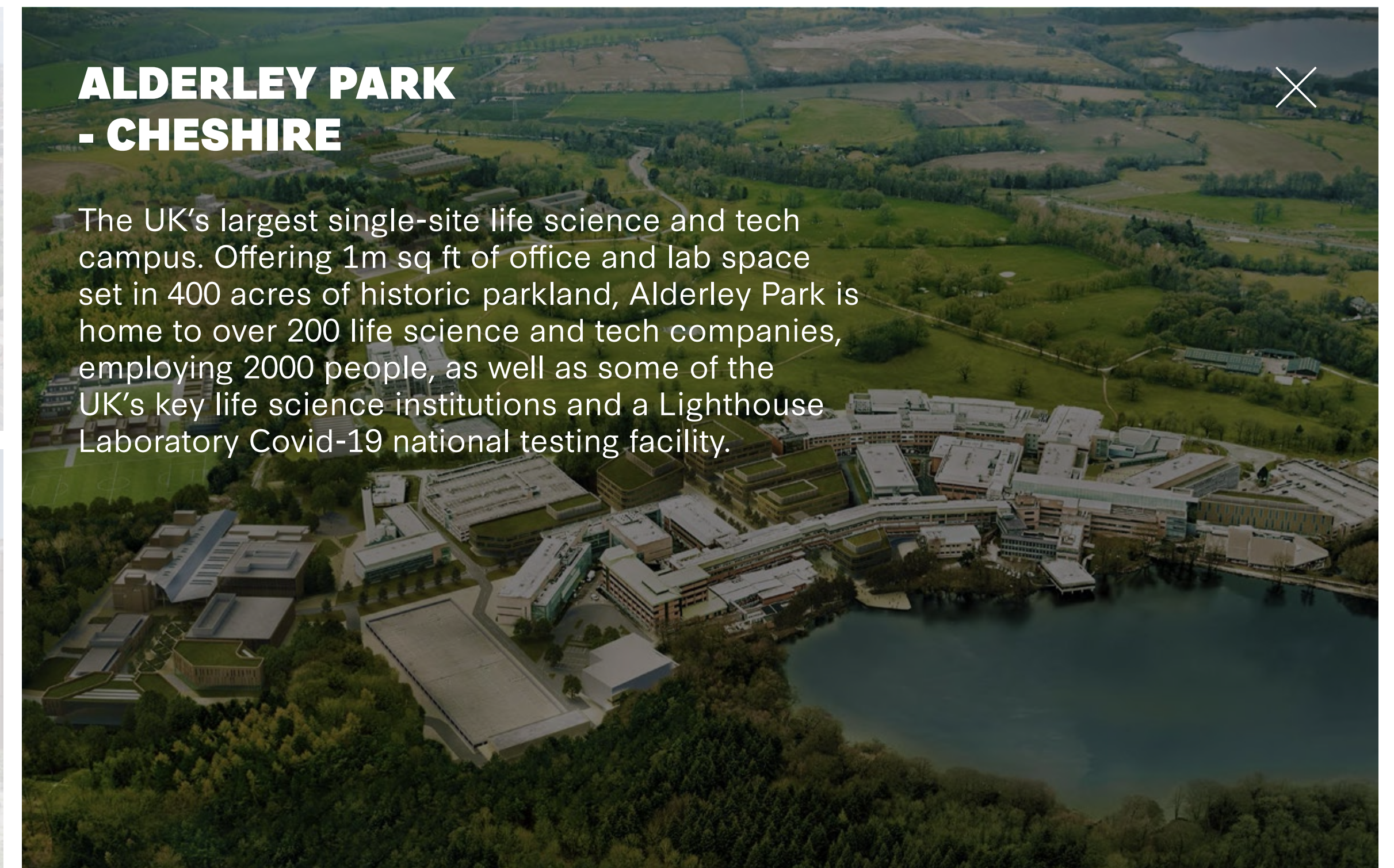
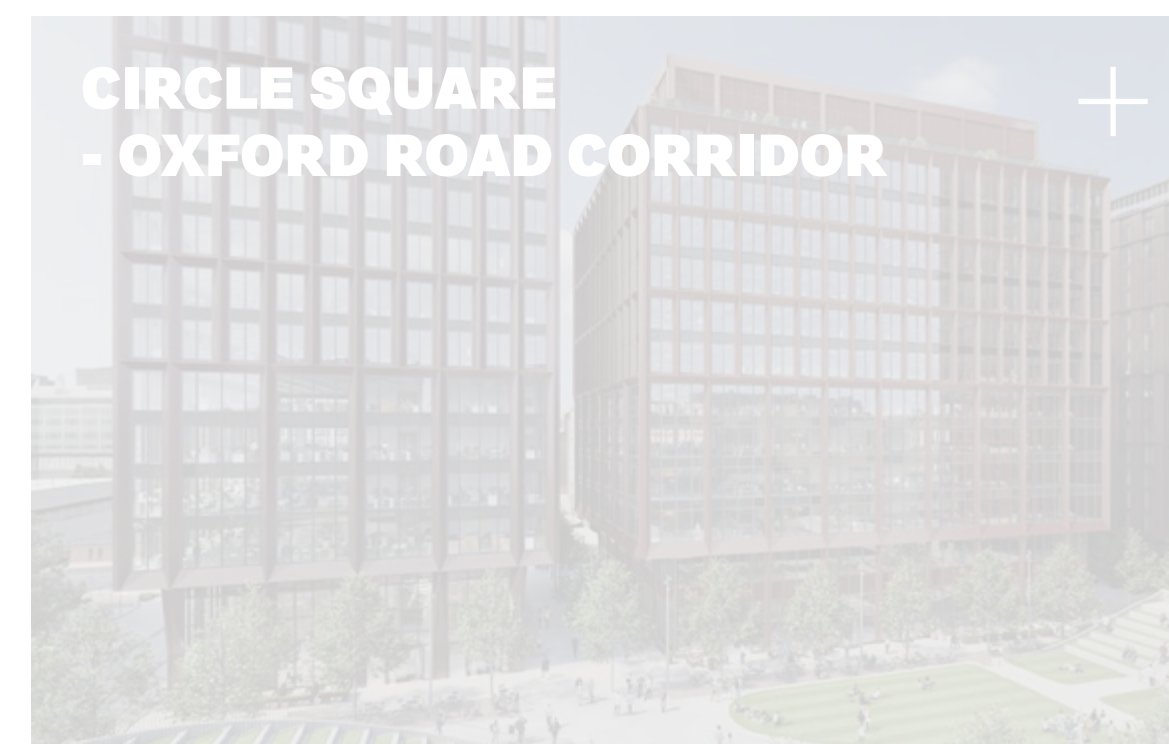
PARTNERS

**NATIONAL NETWORK**

TRACK RECORD

## NATIONAL NETWORK

By locating to Innovation Birmingham you'll be joining and have access to a vibrant, sector-specialist community and national network of over 500 businesses, including disruptive start-ups, fast-growth scale-ups and multinational corporates.





LOCATION

OUR NETWORK

PROPERTY

YOUR COMMUNITY

BENEFITS

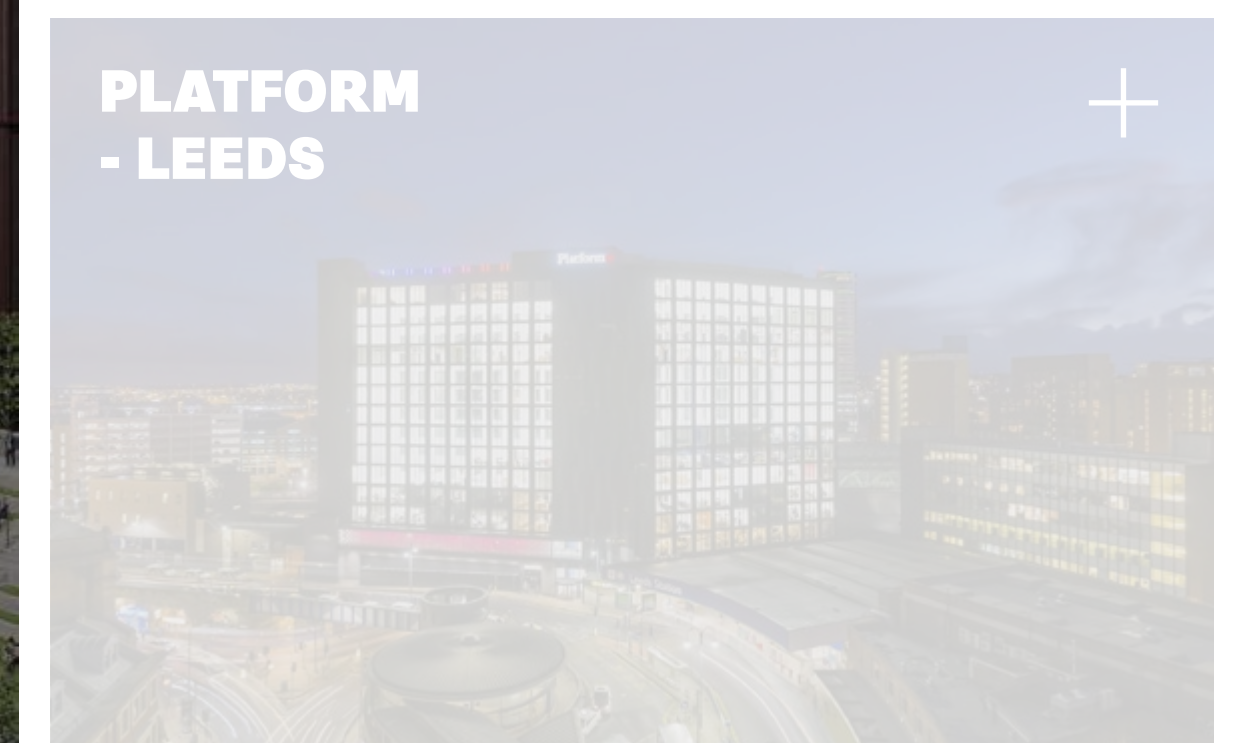
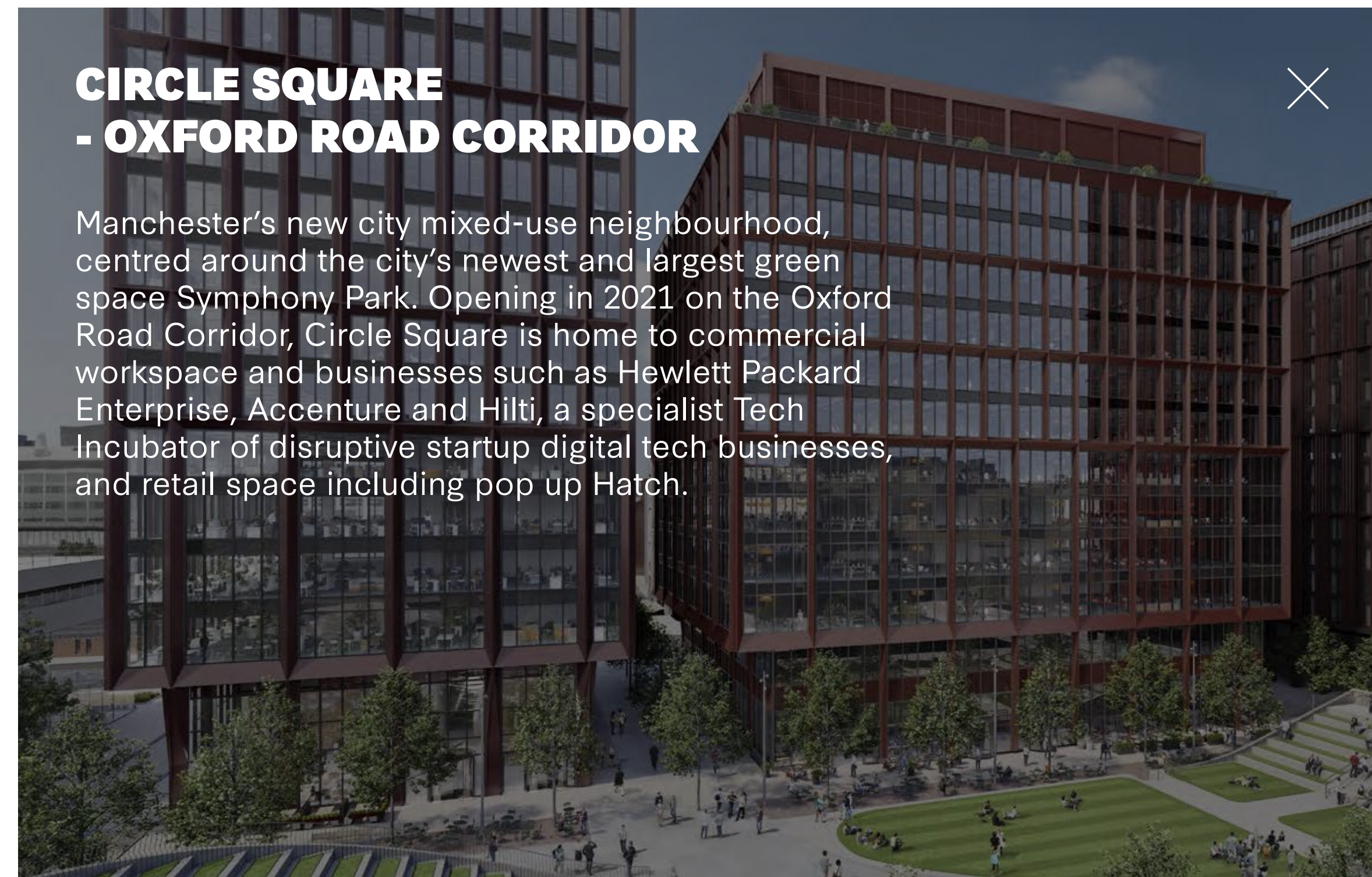
PARTNERS

**NATIONAL NETWORK**

TRACK RECORD

## NATIONAL NETWORK

By locating to Innovation Birmingham you'll be joining and have access to a vibrant, sector-specialist community and national network of over 500 businesses, including disruptive start-ups, fast-growth scale-ups and multinational corporates.





LOCATION

OUR NETWORK

PROPERTY

YOUR COMMUNITY

BENEFITS

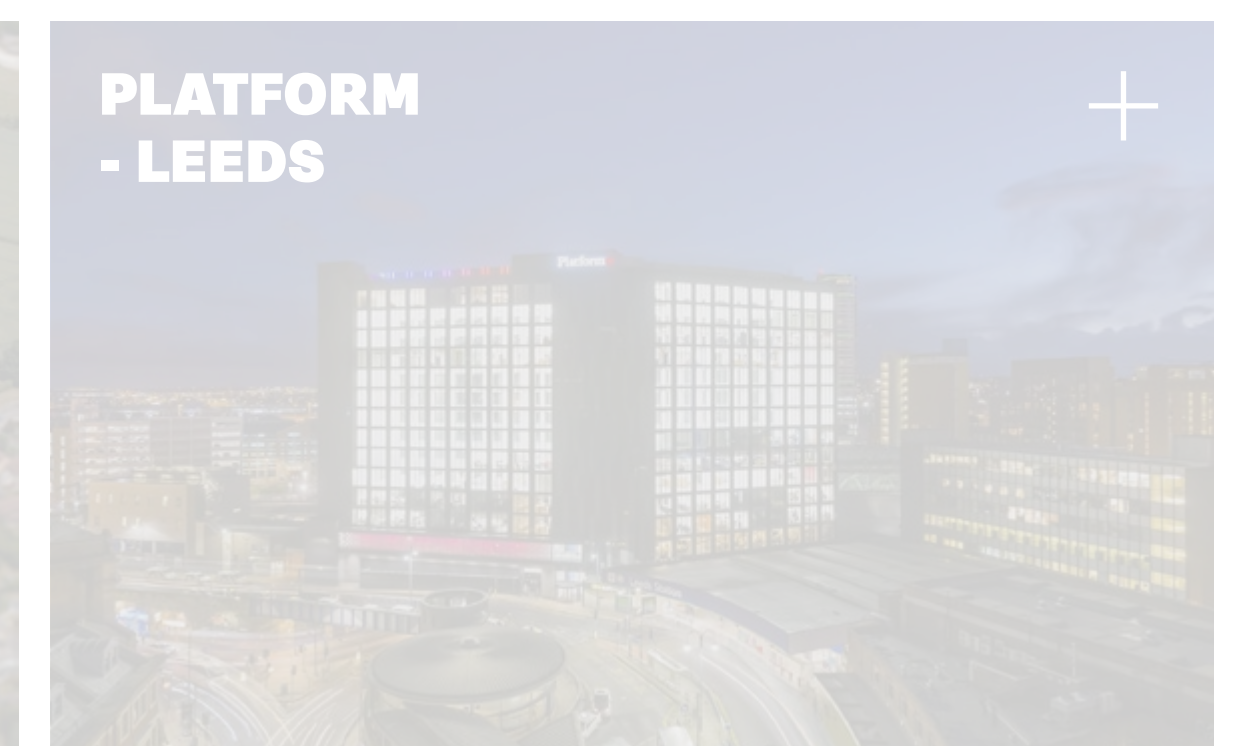
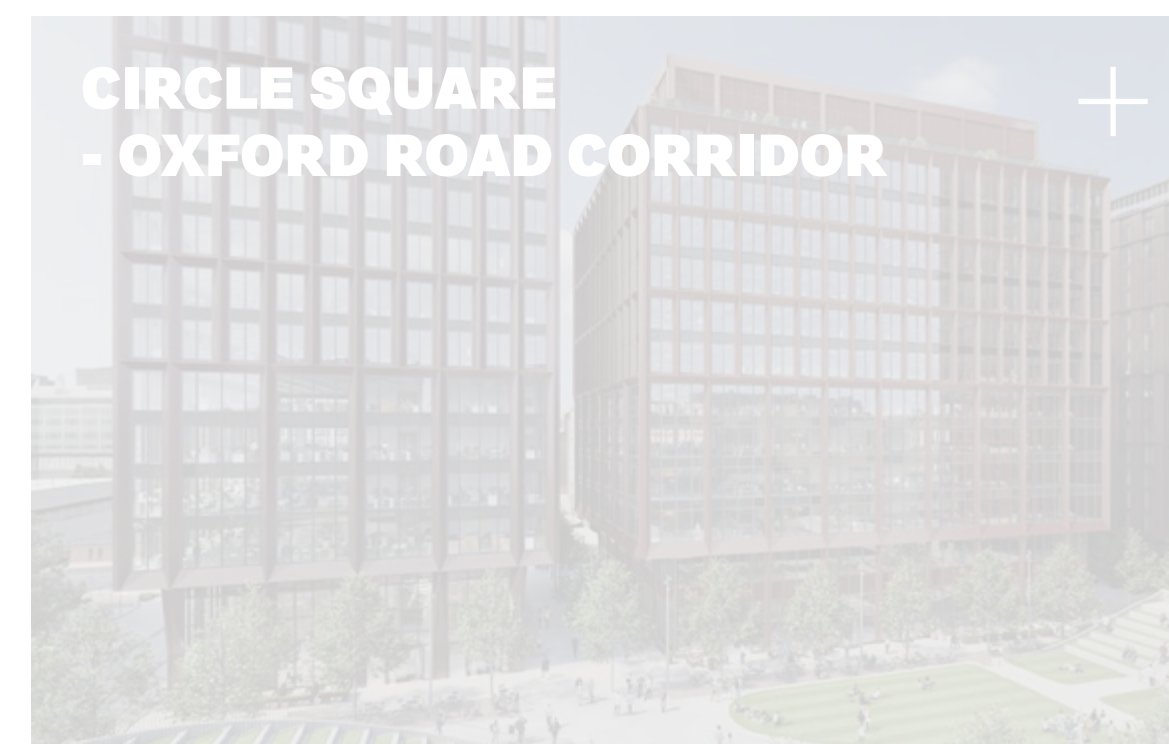
PARTNERS

**NATIONAL NETWORK**

TRACK RECORD

## NATIONAL NETWORK

By locating to Innovation Birmingham you'll be joining and have access to a vibrant, sector-specialist community and national network of over 500 businesses, including disruptive start-ups, fast-growth scale-ups and multinational corporates.





LOCATION

OUR NETWORK

PROPERTY

YOUR COMMUNITY

BENEFITS

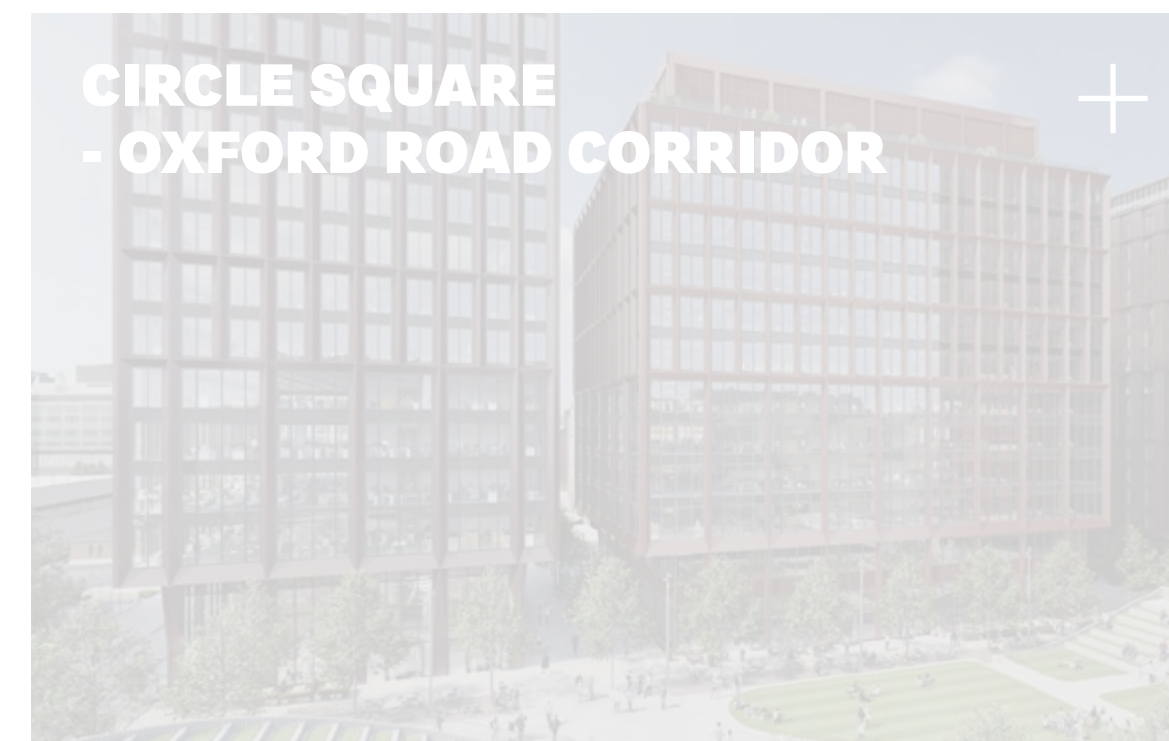
PARTNERS

**NATIONAL NETWORK**

TRACK RECORD

## NATIONAL NETWORK

By locating to Innovation Birmingham you'll be joining and have access to a vibrant, sector-specialist community and national network of over 500 businesses, including disruptive start-ups, fast-growth scale-ups and multinational corporates.





LOCATION

OUR NETWORK

PROPERTY

YOUR COMMUNITY

BENEFITS

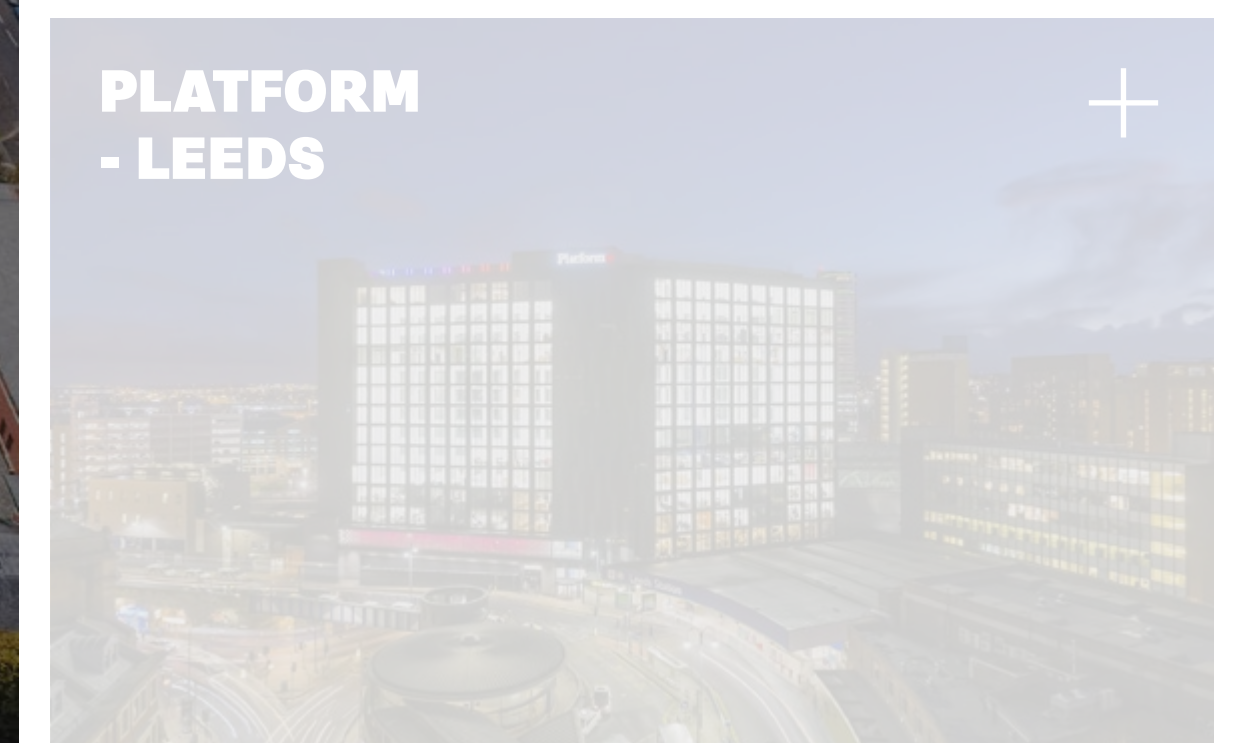
PARTNERS

**NATIONAL NETWORK**

TRACK RECORD

## NATIONAL NETWORK

By locating to Innovation Birmingham you'll be joining and have access to a vibrant, sector-specialist community and national network of over 500 businesses, including disruptive start-ups, fast-growth scale-ups and multinational corporates.





LOCATION

OUR NETWORK

PROPERTY

YOUR COMMUNITY

BENEFITS

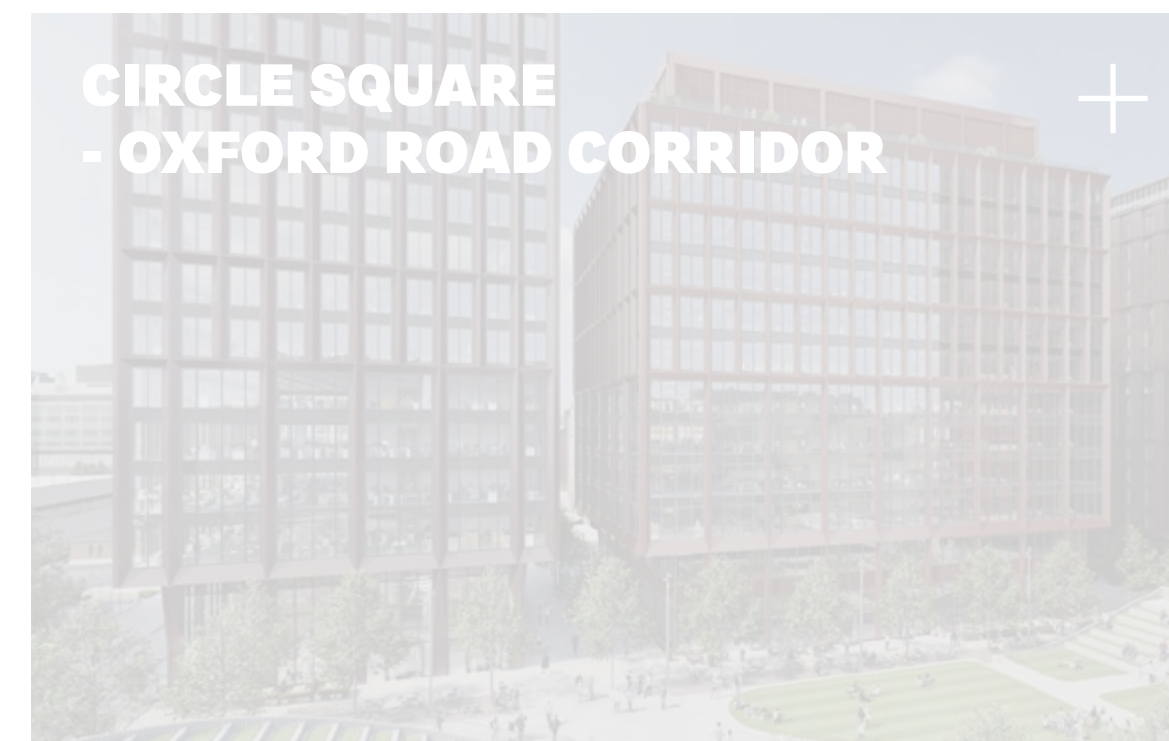
PARTNERS

**NATIONAL NETWORK**

TRACK RECORD

## NATIONAL NETWORK

By locating to Innovation Birmingham you'll be joining and have access to a vibrant, sector-specialist community and national network of over 500 businesses, including disruptive start-ups, fast-growth scale-ups and multinational corporates.





LOCATION

BENEFITS

OUR NETWORK

PARTNERS

PROPERTY

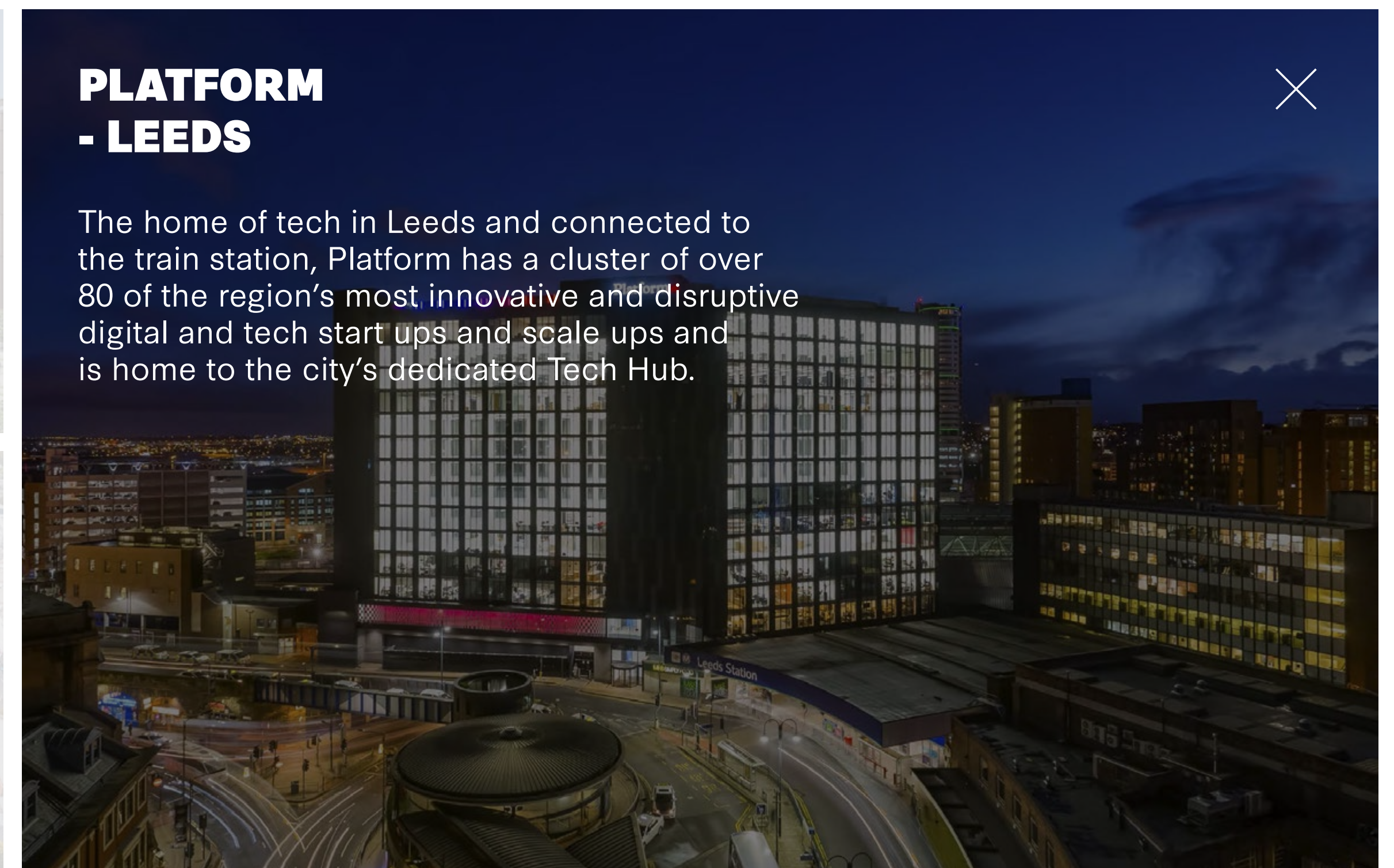
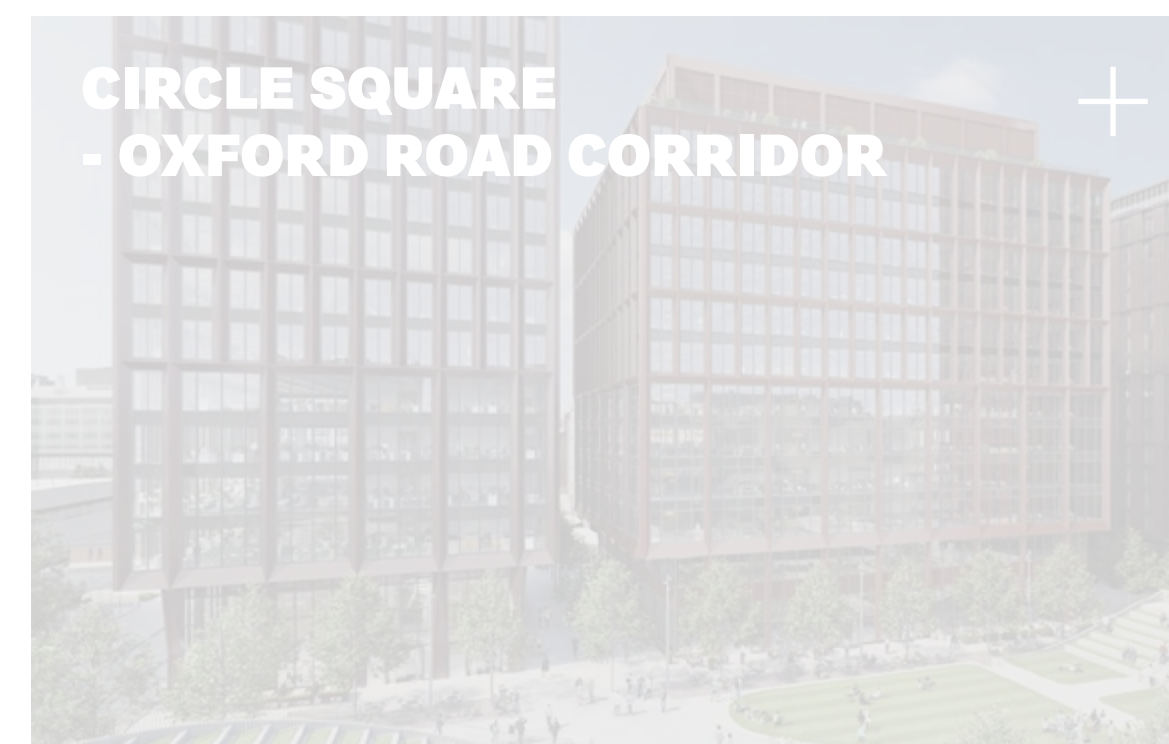
**NATIONAL NETWORK**

YOUR COMMUNITY

TRACK RECORD

## NATIONAL NETWORK

By locating to Innovation Birmingham you'll be joining and have access to a vibrant, sector-specialist community and national network of over 500 businesses, including disruptive start-ups, fast-growth scale-ups and multinational corporates.





## LOCATION

## BENEFITS

## OUR NETWORK

## PARTNERS

## PROPERTY

## NATIONAL NETWORK

## YOUR COMMUNITY

## TRACK RECORD

# TRACK RECORD

Bruntwood SciTech is the UK's leading property provider dedicated to the growth of the science and technology sector, creating a network of thriving innovation districts across the UK.

A joint venture between Bruntwood and Legal & General, Bruntwood SciTech creates the environments and ecosystems for companies in the science and technology sector to form, scale and grow, providing world-leading office space, lab space and business support at locations including Manchester Science Park, Citylabs, Circle Square, Alderley Park, Platform in Leeds, Innovation Birmingham, Birmingham Health Innovation Campus, Liverpool Science Park, and Melbourn Science Park.

Bruntwood SciTech's network is home to a community of over 500 of the UK's most disruptive and innovative businesses as well as national institutions such as the Medicines Discovery Catapult and the Lighthouse Laboratory Covid-19 national testing centre at Alderley Park.

Bruntwood SciTech works in partnership with many of the UK's leading local authorities, universities and NHS Trusts to develop world-class innovation districts and sector-specialist clusters, supporting partners to realise the full potential of science and tech assets and identify opportunities for future growth and collaboration.



9 Locations



Supporting companies to form, scale and grow



2.4m sq ft with plans to grow by a further 1m sqft over the next 10 years



UK's leading property company dedicated to science and technology



Portfolio value £1.2bn within next 5 years



Creating 40,000+ high value jobs in the science and technology sector over the next 10 years

## AWARDS:



Property Week Property Company of the Year 2020



NorthWest Insider Placemaking Project of the Year 2020  
- Circle Square and Hatch



NorthWest Insider Commercial Development of the Year 2020  
- Glasshouse at Alderley Park



Estates Gazette Workspace of the Year award 2020  
- Circle Square



# ENTERPRISE WHARF

CONTACT

LOCATION

OUR NETWORK

PROPERTY

YOUR COMMUNITY

GALLERY

AXONS

FLOOR PLANS

SPECIFICATION

## ENTERPRISE WHARF

Enterprise Wharf will create 120,000 sq ft of impressive office space with a stylish roof terrace from its landscaped canalside location.

Enterprise Wharf will be Birmingham's first smart-enabled building, bringing its Building Management System, HVAC, lighting, CCTV and green energy data to life through a visual data dashboard process, helping achieve ESG and TCFD targets. The smart building management system helps to drive productivity, increases efficiency, reduces cost and improves user experience by connecting the building to IoT sensors, people and processes. The constant data stream of air quality, temperature, equipment failure information and occupation density helps Enterprise Wharf provide the optimal customer experience for all users and visitors.

When complete in 2022, Enterprise Wharf will offer an innately tech enabled environment suitable for the ambitious tech companies of tomorrow.





# ENTERPRISE WHARF

CONTACT

LOCATION

OUR NETWORK

PROPERTY

YOUR COMMUNITY

**GALLERY**

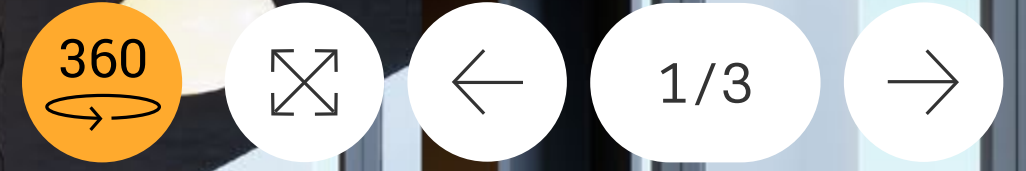
AXONS

FLOOR PLANS

SPECIFICATION

## RECEPTION

The welcoming ground floor reception at Enterprise Wharf, including flexible breakout space and meeting areas. Lift access and staircases to the upper floors are situated to the rear.





# ENTERPRISE WHARF

CONTACT

LOCATION

OUR NETWORK

PROPERTY

YOUR COMMUNITY

**GALLERY**

AXONS

FLOOR PLANS

SPECIFICATION

## OFFICE SPACE

We will work with you to design the perfect home for your tech business. Our large floorplates and floor to ceiling windows can accommodate an array of space suited to your business needs; whether its including break-out areas, to formal meeting rooms or hotdesking.





# ENTERPRISE WHARF

CONTACT

LOCATION

OUR NETWORK

PROPERTY

YOUR COMMUNITY

**GALLERY**

AXONS

FLOOR PLANS

SPECIFICATION

## ROOF TERRACE

The eighth floor of Enterprise Wharf offers a stunning roof terrace with views across the city. Perfect, versatile space for hosting outdoor meetings, seminars or socials.







1/3



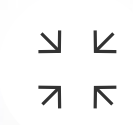




2/3







3/3





[LOCATION](#)[OUR NETWORK](#)[PROPERTY](#)[YOUR COMMUNITY](#)[GALLERY](#)[AXONS](#)[FLOOR PLANS](#)[SPECIFICATION](#)

## FLOORPLATES

An indicative floorplate, shown here as four separate offices.





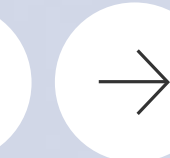
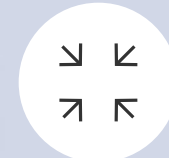
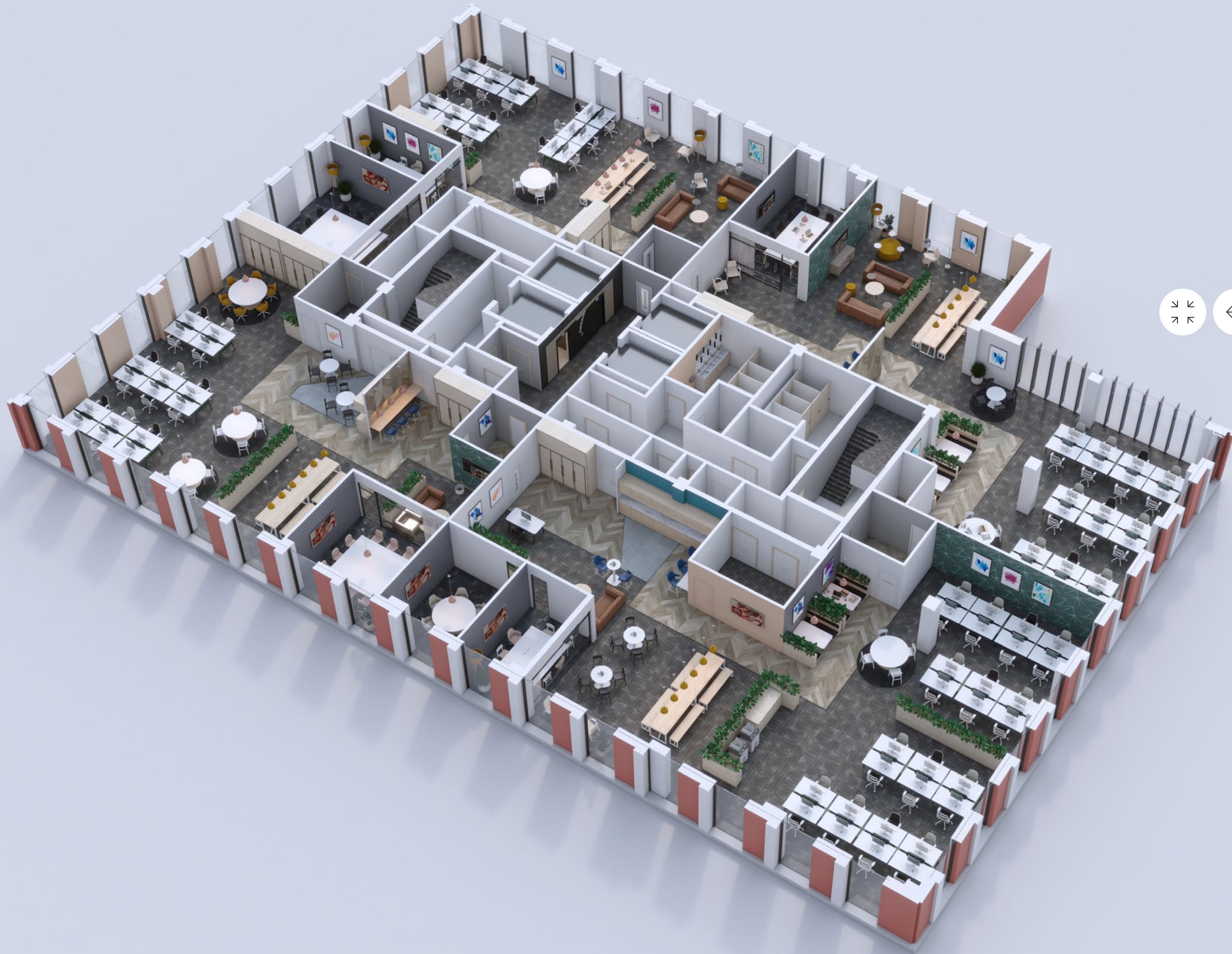
[LOCATION](#)[OUR NETWORK](#)[PROPERTY](#)[YOUR COMMUNITY](#)[GALLERY](#)[AXONS](#)[FLOOR PLANS](#)[SPECIFICATION](#)

## FLOORPLATES

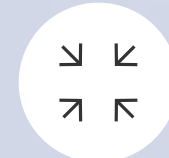
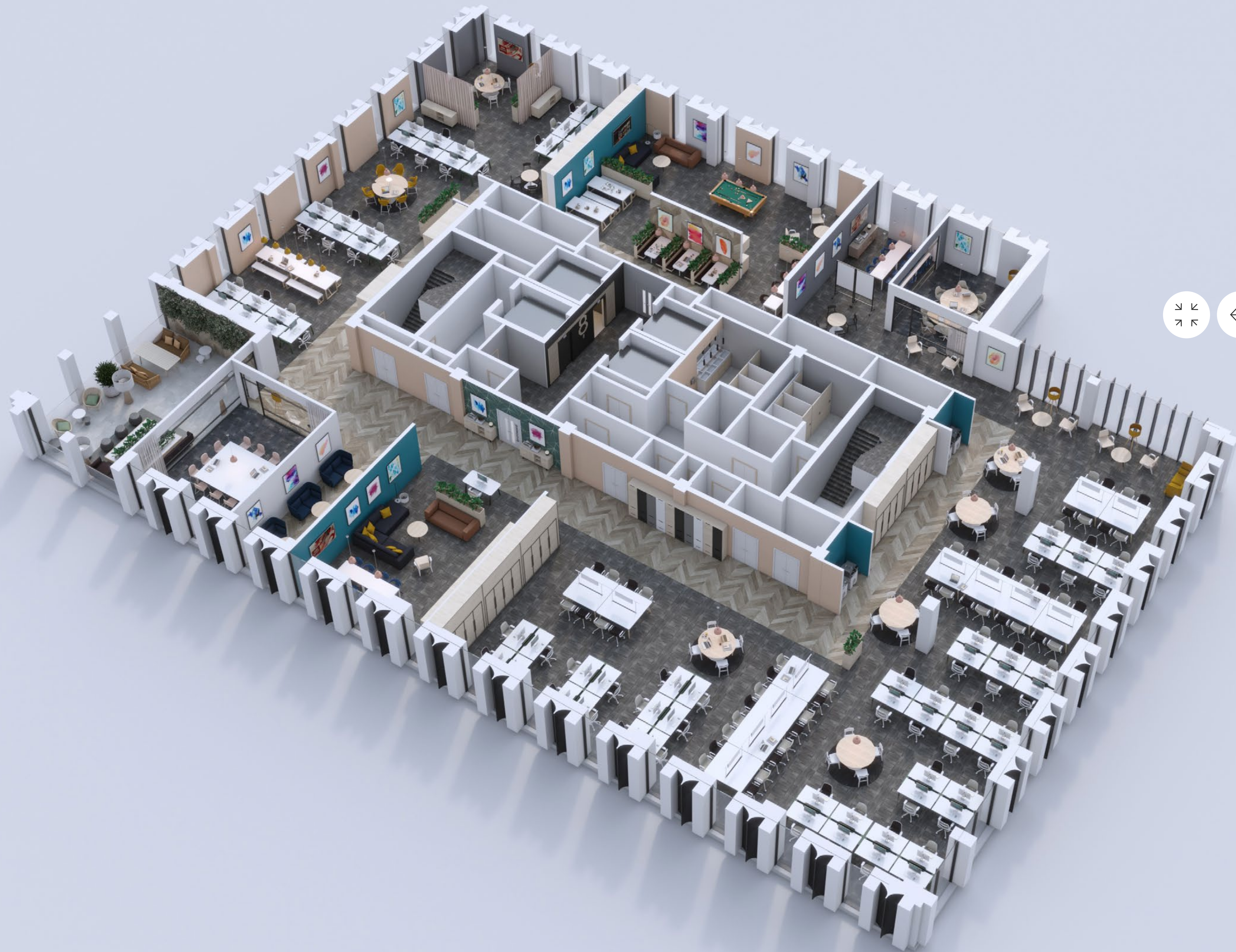
The eighth floor, including its stylish roof terrace.



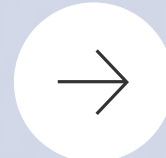








2/2





LOCATION

OUR NETWORK

PROPERTY

YOUR COMMUNITY

GALLERY

AXONS

**FLOOR PLANS**

SPECIFICATION

## FLOOR PLANS

Total Sq Ft For Each Floor

<b>NINE</b>	<b>11,828</b>
<b>EIGHT</b>	<b>11,828</b>
<b>SEVEN</b>	<b>12,458</b>
<b>SIX</b>	<b>12,458</b>
<b>FIVE</b>	<b>12,458</b>
<b>FOUR</b>	<b>12,458</b>
<b>THREE</b>	<b>12,458</b>
<b>TWO</b>	<b>12,458</b>
<b>ONE</b>	<b>11,899</b>
<b>GROUND</b>	<b>6,964</b>

**TOTAL AREA: 117,261**



# ENTERPRISE WHARF

CONTACT

LOCATION

OUR NETWORK

PROPERTY

YOUR COMMUNITY

GALLERY

AXONS

**FLOOR PLANS**

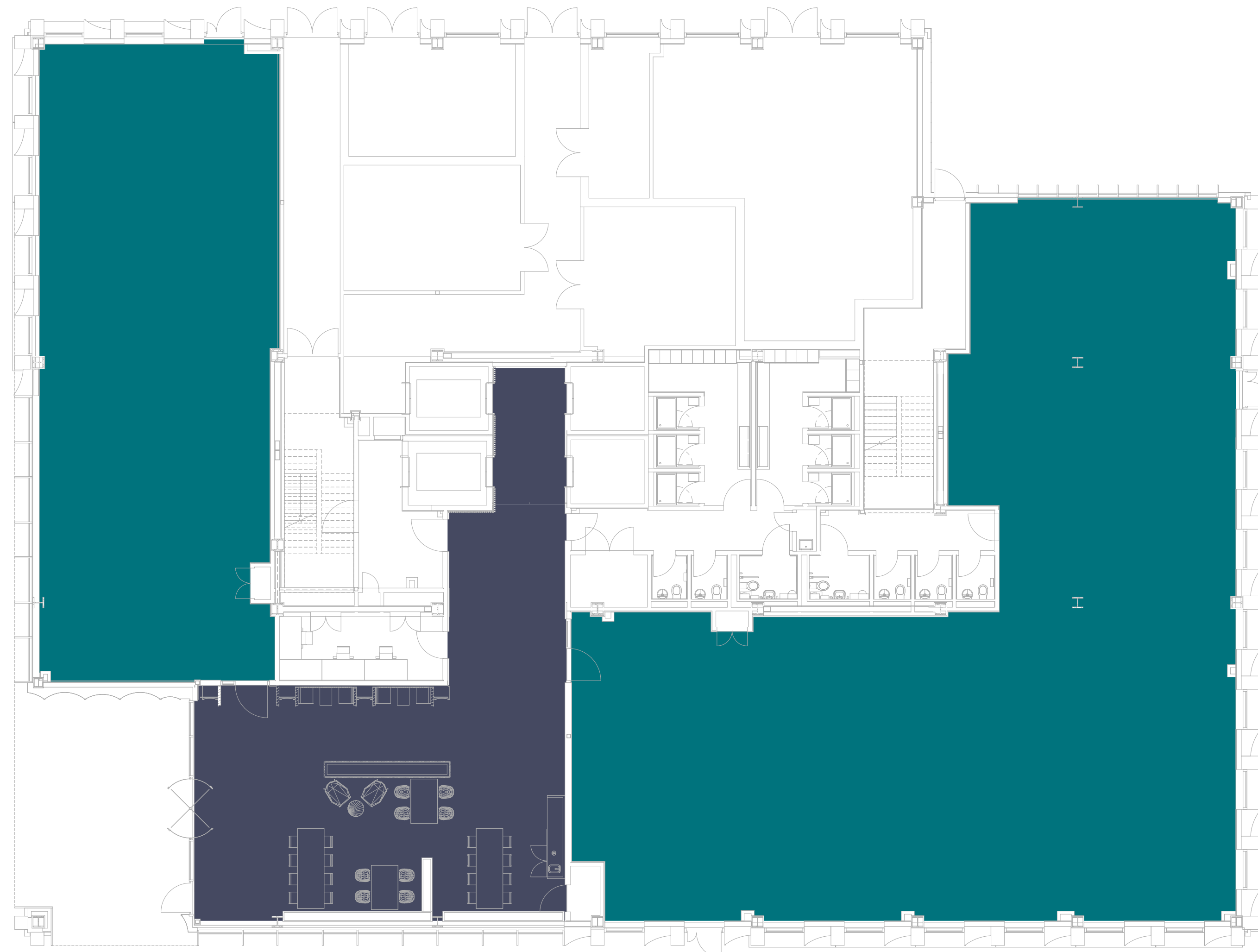
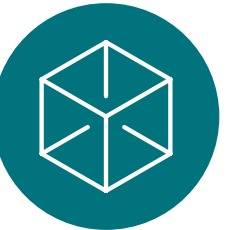
SPECIFICATION



**NINE  
EIGHT  
SEVEN  
SIX  
FIVE  
FOUR  
THREE  
TWO  
ONE  
GROUND**

**TOTAL AREA: 6,964 SQ FT**

[CLICK HERE](#) TO EXPLORE THE INTERACTIVE MODEL



KEY

 LEASABLE AREAS

 RECEPTION



# ENTERPRISE WHARF

CONTACT

LOCATION

OUR NETWORK

PROPERTY

YOUR COMMUNITY

GALLERY

AXONS

FLOOR PLANS

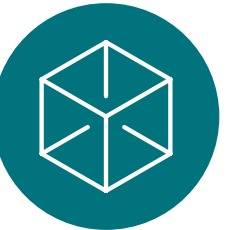
SPECIFICATION



**NINE**  
**EIGHT**  
**SEVEN**  
**SIX**  
**FIVE**  
**FOUR**  
**THREE**  
**TWO**  
**ONE**  
**GROUND**

**TOTAL AREA: 11,899 SQ FT**

[CLICK HERE](#) TO EXPLORE  
THE INTERACTIVE MODEL



KEY

 LEASABLE AREAS



# ENTERPRISE WHARF

CONTACT

LOCATION

OUR NETWORK

PROPERTY

YOUR COMMUNITY

GALLERY

AXONS

FLOOR PLANS

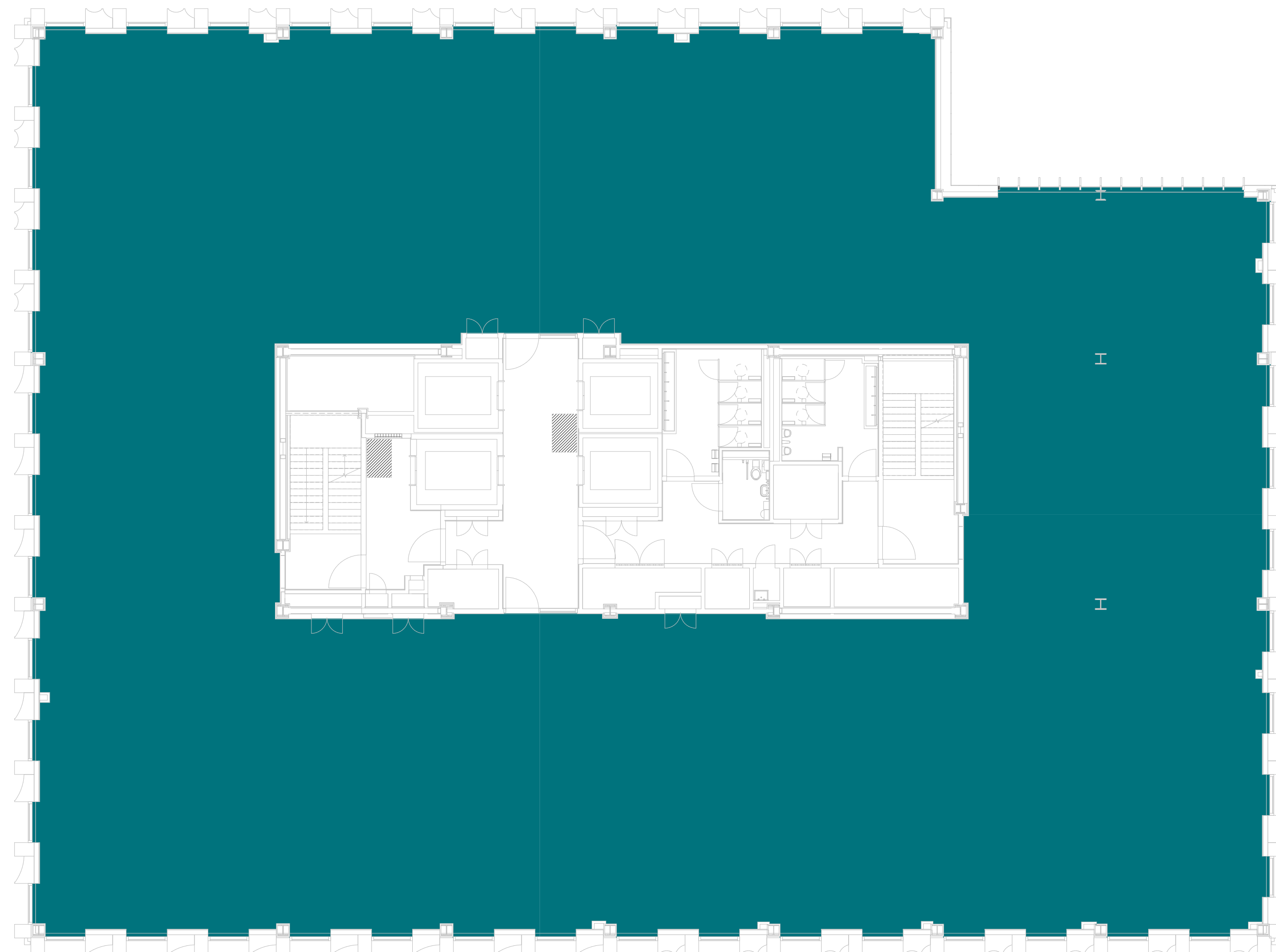
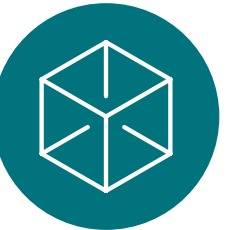
SPECIFICATION



**NINE**  
**EIGHT**  
**SEVEN**  
**SIX**  
**FIVE**  
**FOUR**  
**THREE**  
**TWO**  
**ONE**  
**GROUND**

**TOTAL AREA: 12,458 SQ FT**

[CLICK HERE](#) TO EXPLORE THE INTERACTIVE MODEL



KEY

 LEASABLE AREAS



# ENTERPRISE WHARF

CONTACT

LOCATION

OUR NETWORK

PROPERTY

YOUR COMMUNITY

GALLERY

AXONS

**FLOOR PLANS**

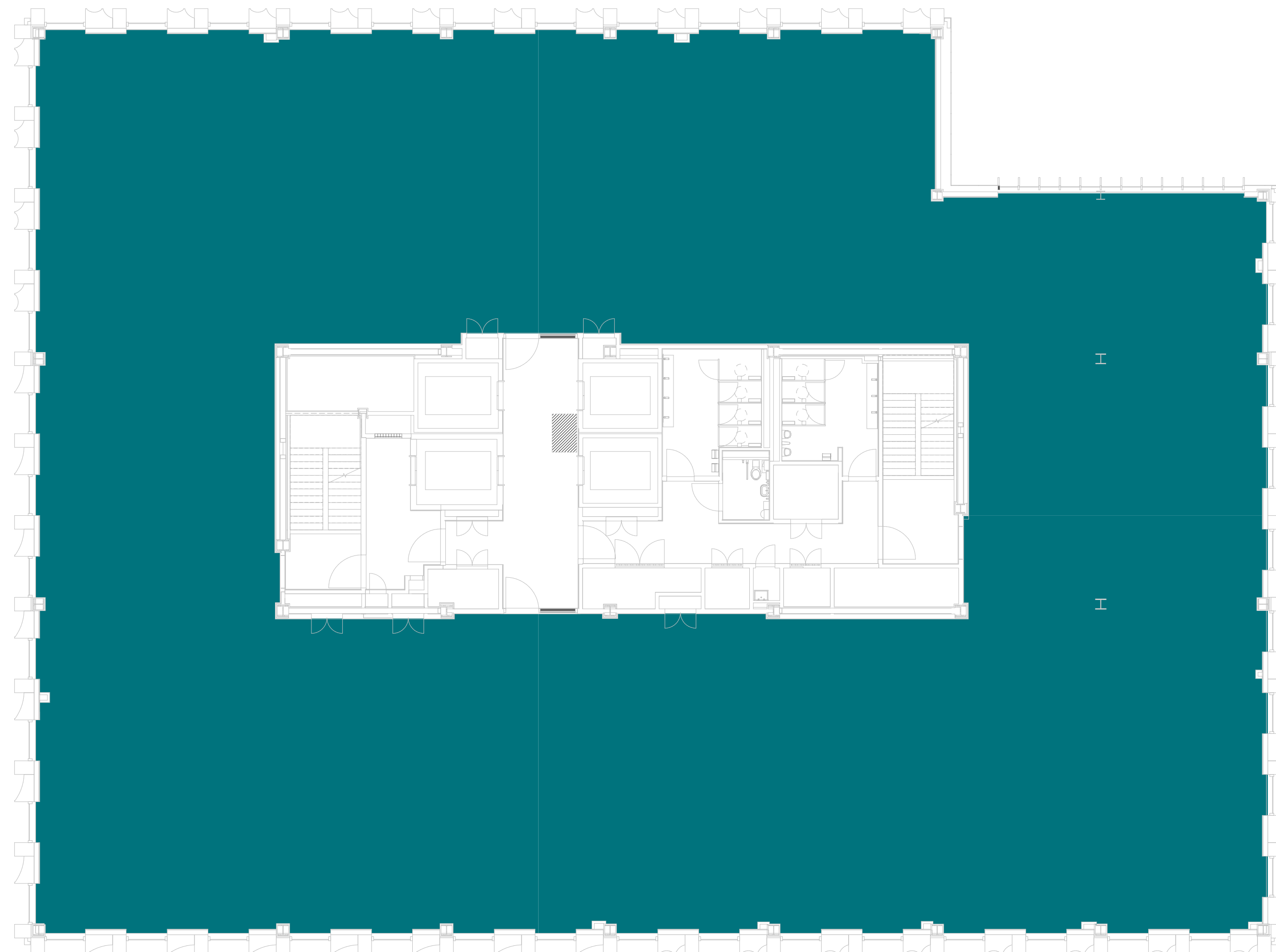
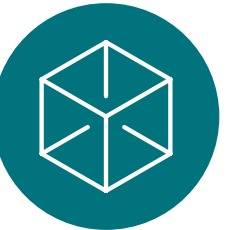
SPECIFICATION



**NINE**  
**EIGHT**  
**SEVEN**  
**SIX**  
**FIVE**  
**FOUR**  
**THREE**  
**TWO**  
**ONE**  
**GROUND**

**TOTAL AREA: 12,458 SQ FT**

[CLICK HERE](#) TO EXPLORE  
THE INTERACTIVE MODEL



KEY

 LEASABLE AREAS



# ENTERPRISE WHARF

CONTACT

LOCATION

OUR NETWORK

PROPERTY

YOUR COMMUNITY

GALLERY

AXONS

**FLOOR PLANS**

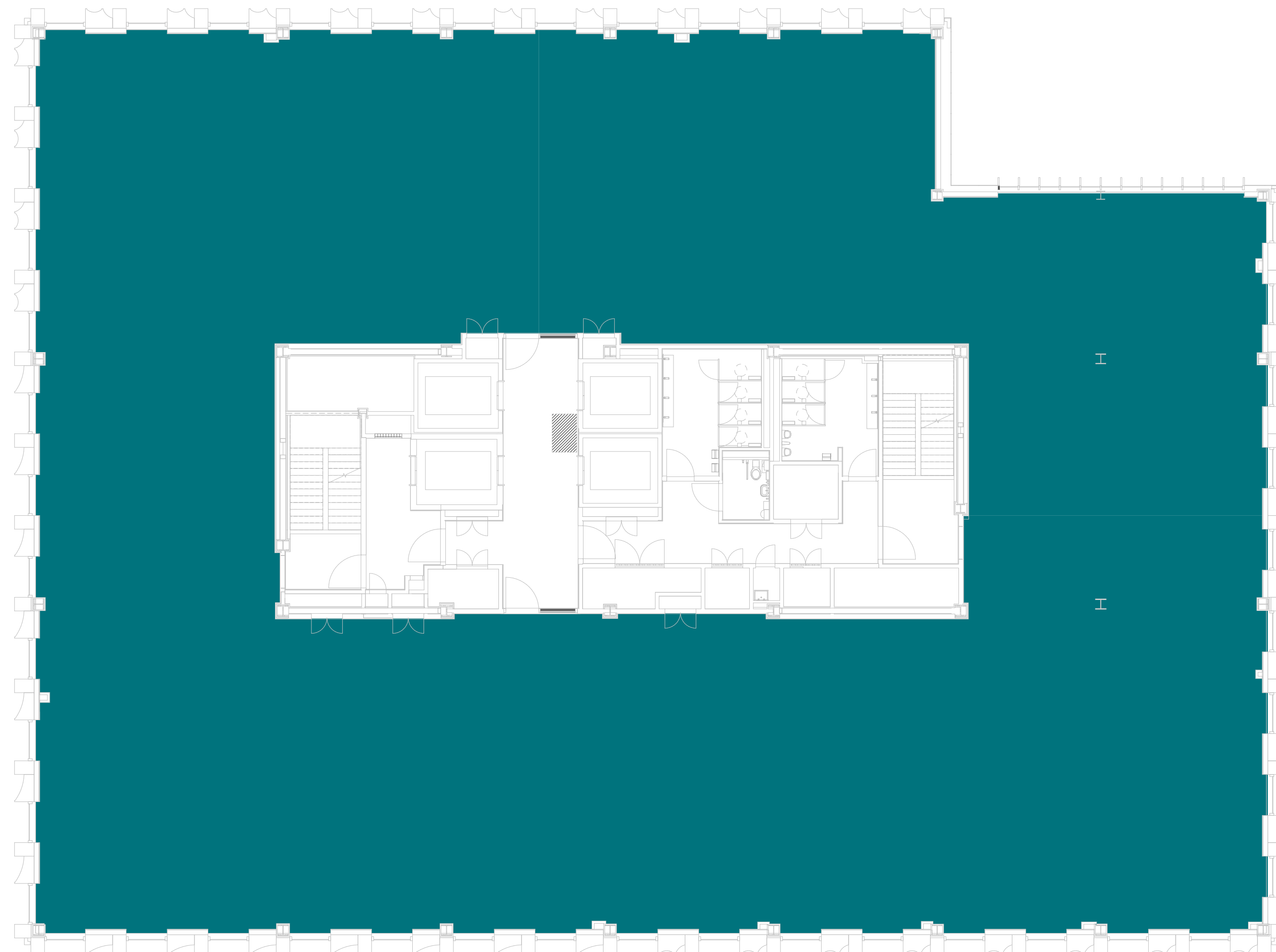
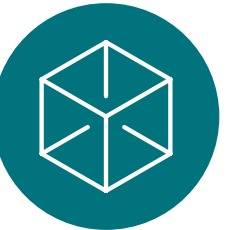
SPECIFICATION



**NINE**  
**EIGHT**  
**SEVEN**  
**SIX**  
**FIVE**  
**FOUR**  
**THREE**  
**TWO**  
**ONE**  
**GROUND**

**TOTAL AREA: 12,458 SQ FT**

[CLICK HERE](#) TO EXPLORE  
THE INTERACTIVE MODEL



KEY

 LEASABLE AREAS



# ENTERPRISE WHARF

CONTACT

LOCATION

OUR NETWORK

PROPERTY

YOUR COMMUNITY

GALLERY

AXONS

FLOOR PLANS

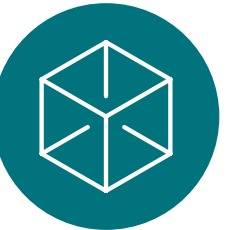
SPECIFICATION



**NINE**  
**EIGHT**  
**SEVEN**  
**SIX**  
**FIVE**  
**FOUR**  
**THREE**  
**TWO**  
**ONE**  
**GROUND**

**TOTAL AREA: 12,458 SQ FT**

[CLICK HERE](#) TO EXPLORE  
THE INTERACTIVE MODEL



KEY

 LEASABLE AREAS



# ENTERPRISE WHARF

CONTACT

LOCATION

OUR NETWORK

PROPERTY

YOUR COMMUNITY

GALLERY

AXONS

**FLOOR PLANS**

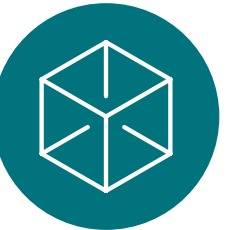
SPECIFICATION



**NINE**  
**EIGHT**  
**SEVEN**  
**SIX**  
**FIVE**  
**FOUR**  
**THREE**  
**TWO**  
**ONE**  
**GROUND**

**TOTAL AREA: 12,458 SQ FT**

[CLICK HERE](#) TO EXPLORE THE INTERACTIVE MODEL



KEY

 LEASABLE AREAS



# ENTERPRISE WHARF

CONTACT

LOCATION

OUR NETWORK

PROPERTY

YOUR COMMUNITY

GALLERY

AXONS

**FLOOR PLANS**

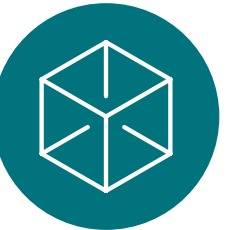
SPECIFICATION



**NINE**  
**EIGHT**  
**SEVEN**  
**SIX**  
**FIVE**  
**FOUR**  
**THREE**  
**TWO**  
**ONE**  
**GROUND**

**TOTAL AREA: 12,458 SQ FT**

[CLICK HERE](#) TO EXPLORE  
THE INTERACTIVE MODEL



KEY

 LEASABLE AREAS



# ENTERPRISE WHARF

CONTACT

LOCATION

OUR NETWORK

PROPERTY

YOUR COMMUNITY

GALLERY

AXONS

FLOOR PLANS

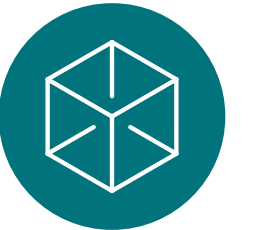
SPECIFICATION



**NINE**  
**EIGHT**  
**SEVEN**  
**SIX**  
**FIVE**  
**FOUR**  
**THREE**  
**TWO**  
**ONE**  
**GROUND**

**TOTAL AREA: 11,828 SQ FT**  
**TERRACE: 505 SQ FT**

[CLICK HERE](#) TO EXPLORE  
THE INTERACTIVE MODEL



KEY

 LEASABLE AREAS

 TERRACE



# ENTERPRISE WHARF

CONTACT

LOCATION

OUR NETWORK

PROPERTY

YOUR COMMUNITY

GALLERY

AXONS

**FLOOR PLANS**

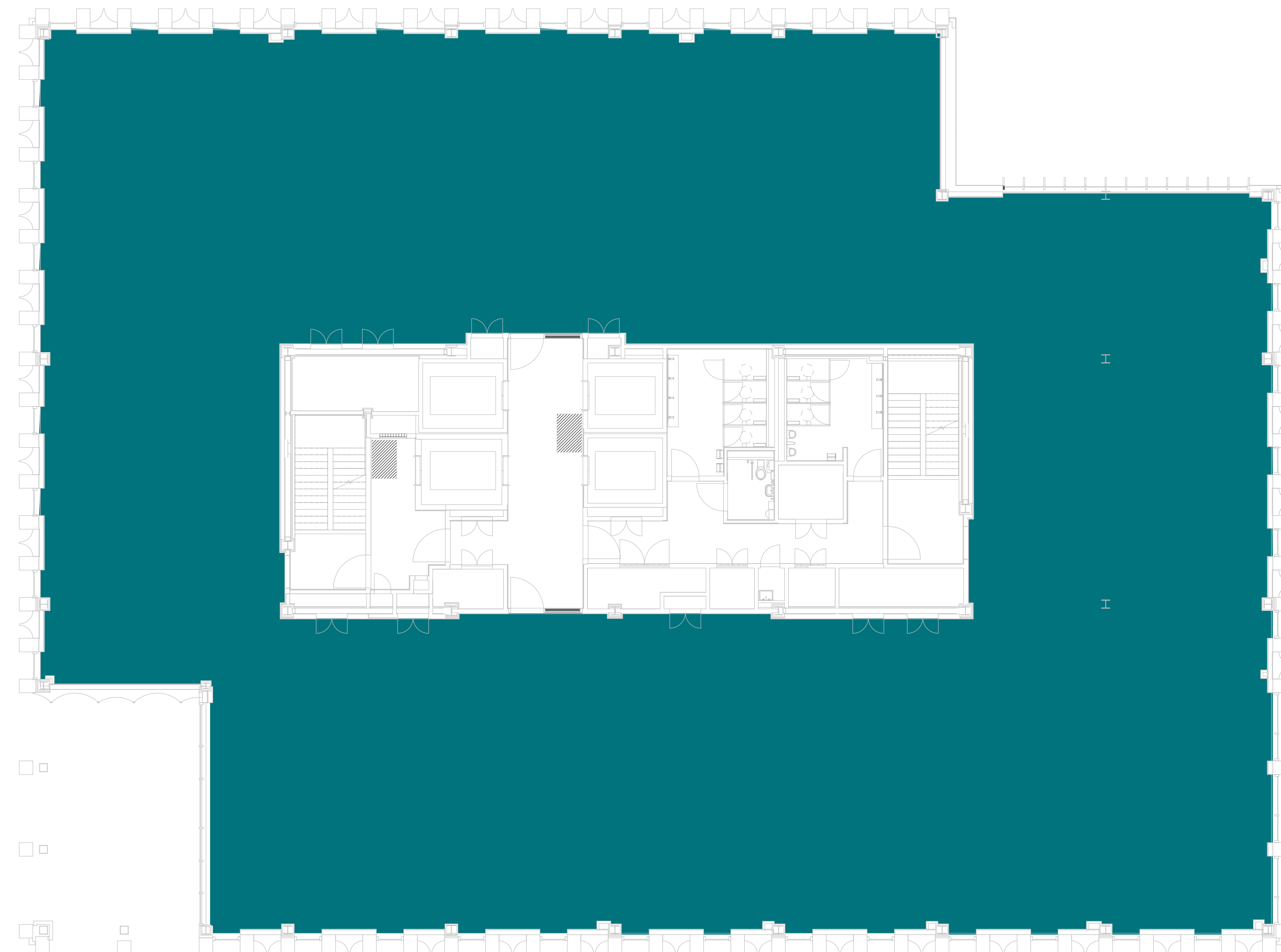
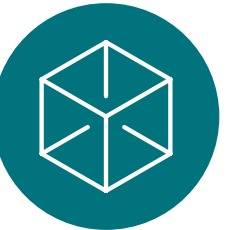
SPECIFICATION



**NINE**  
**EIGHT**  
**SEVEN**  
**SIX**  
**FIVE**  
**FOUR**  
**THREE**  
**TWO**  
**ONE**  
**GROUND**

**TOTAL AREA: 11,828 SQ FT**

[CLICK HERE](#) TO EXPLORE THE INTERACTIVE MODEL



KEY

 LEASABLE AREAS



# ENTERPRISE WHARF

CONTACT

LOCATION

OUR NETWORK

PROPERTY

YOUR COMMUNITY

GALLERY

AXONS

FLOOR PLANS

**SPECIFICATION**



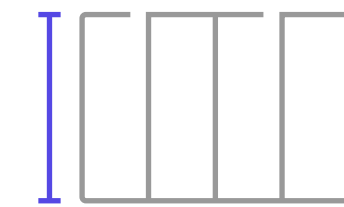
Smart-enabled building



EPC 'A' Rating



Campus events space and meeting rooms



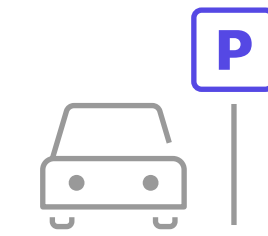
Floor to ceiling windows



Canalside location



Secure cycle storage



On campus parking



3.3m floor to ceiling height upper floor offices with an exposed pre-cast concrete soffit and services



Energy efficient lighting



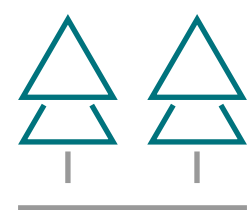
Roof terrace



24 hour fob access



5.5m double height reception area



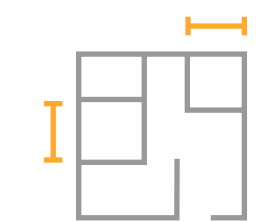
External landscaping



5G connectivity throughout



Campus cafe



Office suites from 2,396 sq ft (222.5 m<sup>2</sup>) to 12,458 sq ft (1,157 m<sup>2</sup>) floorplates. 117,261 sq ft total building



[LOCATION](#)[COMPANIES](#)[OUR NETWORK](#)[TESTIMONIALS](#)[PROPERTY](#)[EVENTS](#)[YOUR COMMUNITY](#)[CAMPUS FACILITIES](#)

## YOUR COMMUNITY

The vibrant, thriving community is home to likeminded startups, scale ups and global companies working in the tech sector. Through our extensive business support and community program, companies can access events such as our Growth Hub Advice Service, Business Basics and Founder Growth Series, as well as a number of networking and social events. Our active calendar fosters an environment where problem sharing and idea creation is the norm and there is always the opportunity to make new connections. Access to other Bruntwood SciTech locations and events is also available to businesses located on campus.





# ENTERPRISE WHARF

CONTACT

LOCATION

COMPANIES

OUR NETWORK

TESTIMONIALS

PROPERTY

EVENTS

YOUR COMMUNITY

CAMPUS FACILITIES

## IN GOOD COMPANY





LOCATION

COMPANIES

OUR NETWORK

TESTIMONIALS

PROPERTY

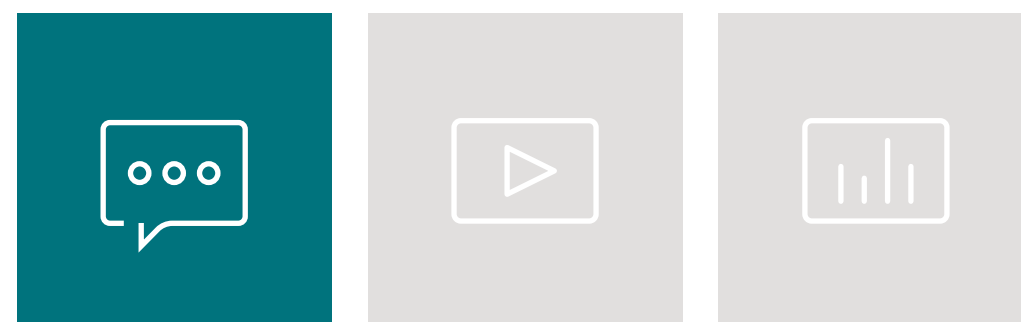
EVENTS

YOUR COMMUNITY

CAMPUS FACILITIES

## WHAT YOUR FUTURE FELLOW COMMUNITY THINKS

Innovation Birmingham is home to 150 innovative digital tech businesses, working in fintech, proptech, greentech and more. Here's what a few of them they think about being based on the campus.



// *Being on the campus enabled us to access local talent that prior to being based here would not have been known to us. This led to the recruitment of a CTO and business co-founder who remains a key part of the business to this day. //*

**RICH WESTMAN**  
CEO, Kaido

// *As a fast scaling EdTech business, we've found Birmingham to be the perfect base. We've been able to raise over £2m in equity funding and build a highly talented team, all whilst being based at the Innovation Birmingham Campus. //*

**VEEJAY LINGIAH**  
CEO, LEARNING LABS

// *Innovation is vital for a tech start-up like us, we feel very fortunate to have world-class universities offering engineering and computer science degrees right on our doorstep at Innovation Birmingham. Fresh talent doesn't just mean attracting bright young sparks but honing that youth, enthusiasm and skill in ways that can drive innovation inside a tech company. With so many tech companies based in Birmingham now, there's an incentive for students to stay in the city after they graduate which has helped turn the region into a tech hub. //*

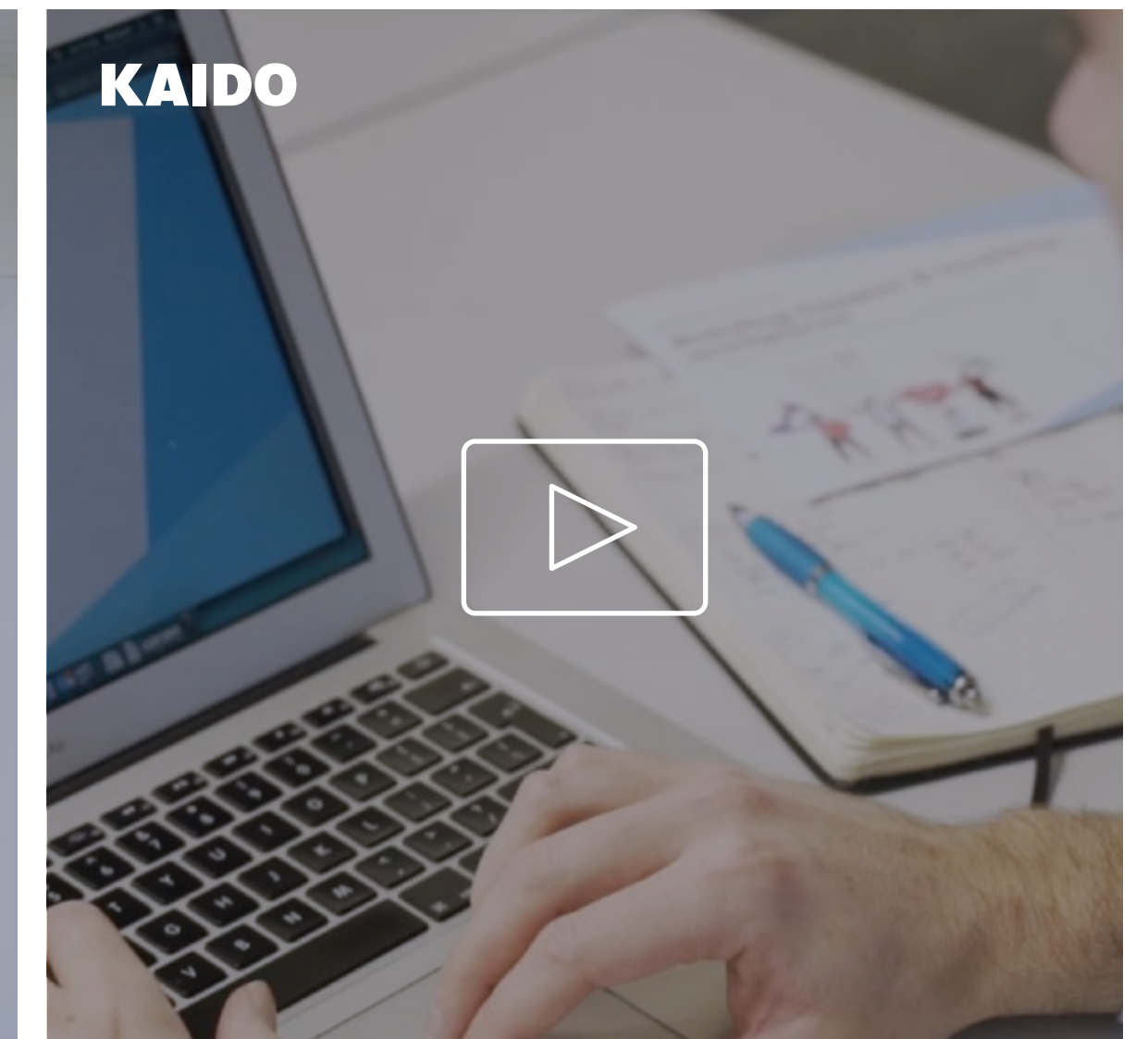
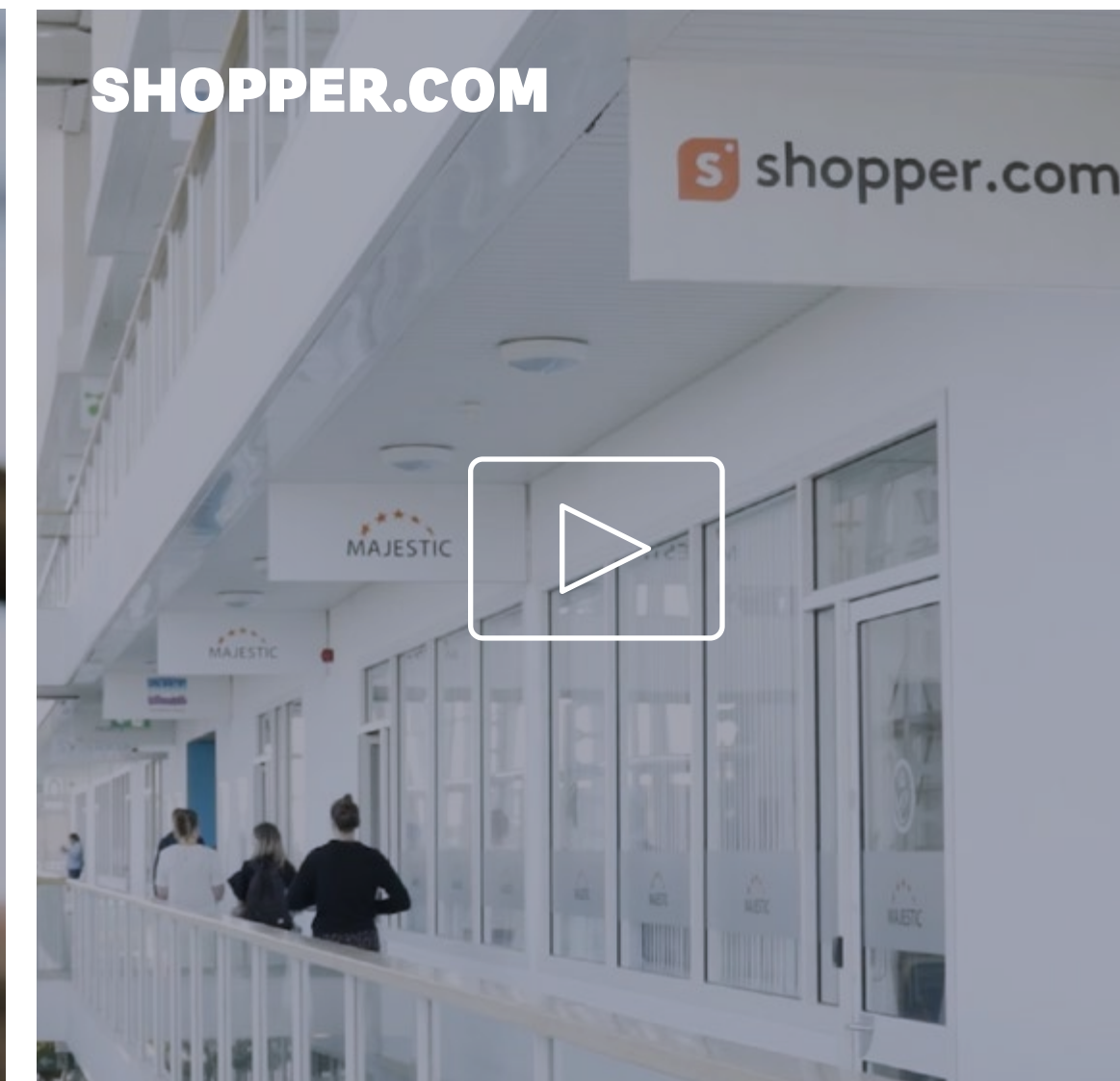
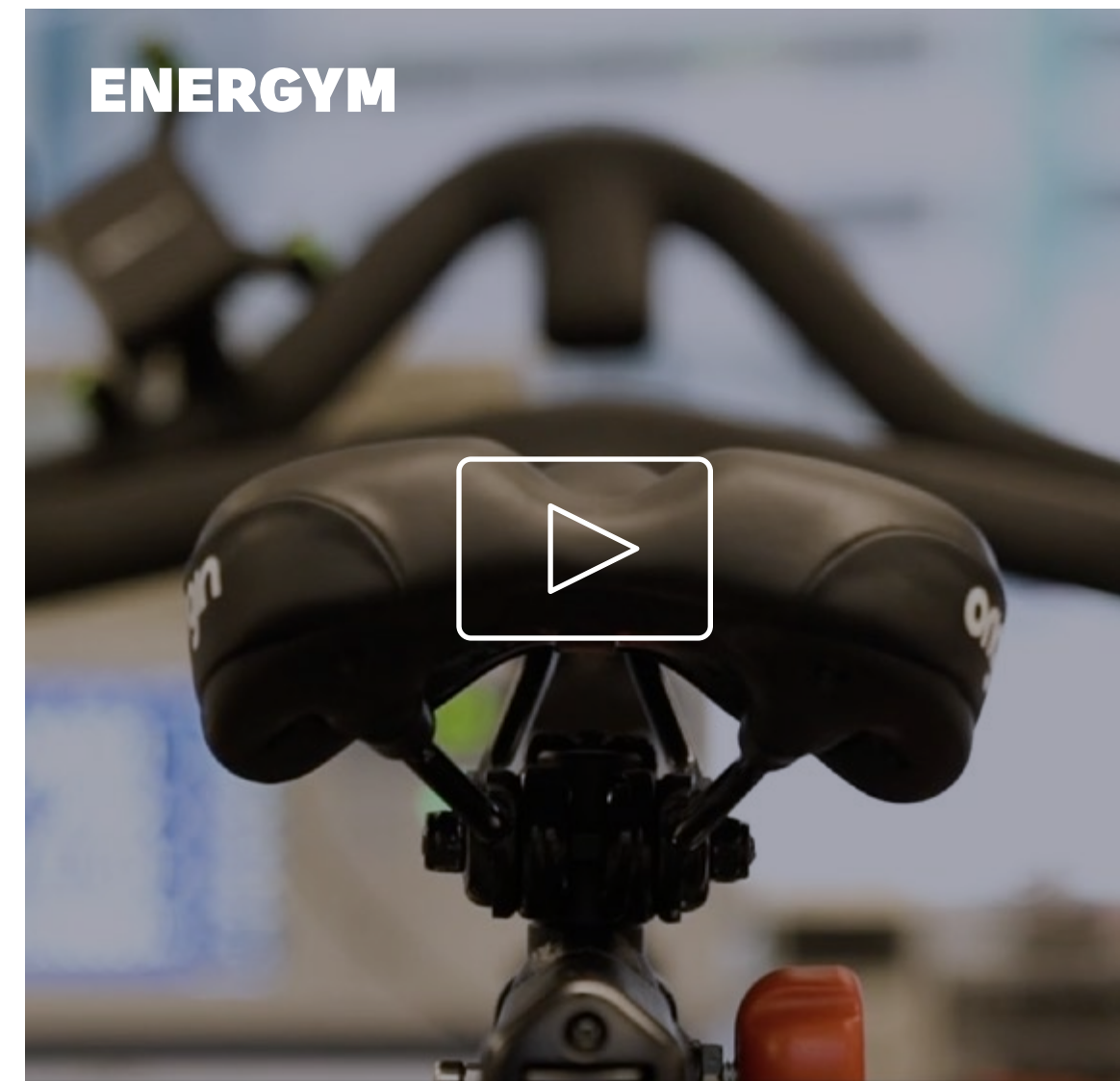
**WILL FLINT, CEO**  
ENERGYM



[LOCATION](#)[OUR NETWORK](#)[PROPERTY](#)[YOUR COMMUNITY](#)[COMPANIES](#)[TESTIMONIALS](#)[EVENTS](#)[CAMPUS FACILITIES](#)

## WHAT YOUR FUTURE FELLOW COMMUNITY THINKS

Innovation Birmingham is home to 150 innovative digital tech businesses, working in fintech, proptech, greentech and more. Here's what a few of them they think about being based on the campus.





LOCATION

COMPANIES

OUR NETWORK

**TESTIMONIALS**

PROPERTY

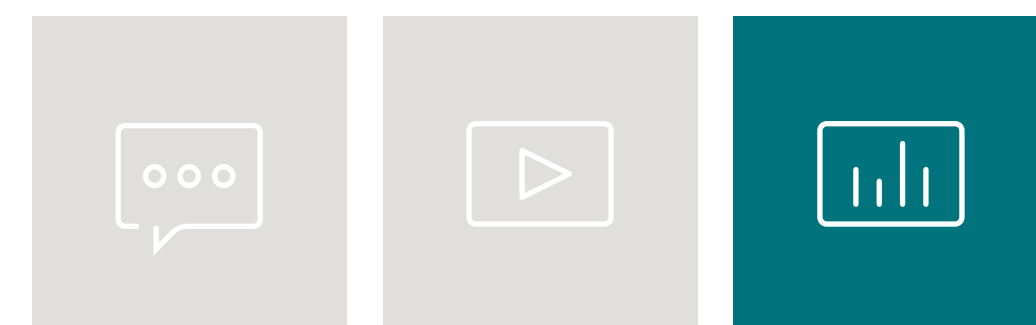
EVENTS

YOUR COMMUNITY

CAMPUS FACILITIES

## WHAT YOUR FUTURE FELLOW COMMUNITY THINKS

Innovation Birmingham is home to 150 innovative digital tech businesses, working in fintech, proptech, greentech and more. Here's what a few of them they think about being based on the campus.



In our annual customer impact survey, businesses at Innovation Birmingham shared the following insights on the benefits of being located in the Bruntwood SciTech network.

**74%**

of businesses have grown revenue in the last 12 months

**61%**

of businesses benefit from being a Bruntwood SciTech customer

**26%**

of businesses raised investment in the last 12 months

**85%**

of businesses are confident in their future prospects

**39%**

of businesses have expanded their headcount in the last twelve months



LOCATION

COMPANIES

OUR NETWORK

TESTIMONIALS

PROPERTY

EVENTS

YOUR COMMUNITY

CAMPUS FACILITIES

## A VIBRANT SOCIAL COMMUNITY

By joining the Bruntwood SciTech community at Innovation Birmingham, your employees will be able to access health and wellbeing programmes and social events throughout the year, including running clubs, mindfulness activities, Tech Wednesday meet ups, Summer BBQs and Christmas socials.





# ENTERPRISE WHARF

CONTACT

LOCATION  
COMPANIES

OUR NETWORK  
TESTIMONIALS

PROPERTY  
EVENTS

YOUR COMMUNITY  
**CAMPUS FACILITIES**

## CAMPUS FACILITIES

By being located at Enterprise Wharf. Your business and employees enjoy the added benefits of the Innovation Birmingham campus. These include on site car parking with EV charging points, additional secure cycle storage, cafe, additional meeting rooms, event space, shared breakout space, and landscaped outdoor space.





LOCATION

OUR NETWORK

PROPERTY

YOUR COMMUNITY

## CONTACT US

### Cliff Dennett

Head of Commercial  
Bruntwood SciTech - Birmingham

[cliff.dennett@bruntwood.co.uk](mailto:cliff.dennett@bruntwood.co.uk)

07968 538989



[grow.bruntwood.co.uk/enterprisewharf](http://grow.bruntwood.co.uk/enterprisewharf)

**bruntwood**  
SciTech



LOCATION

OUR NETWORK

PROPERTY

YOUR COMMUNITY

## CONTACT US

If you'd like to know more about Enterprise Wharf, Innovation Birmingham or Bruntwood SciTech please don't hesitate to get in contact with us by dropping us an email or giving us a call

### David Hardman

Managing Director  
Bruntwood SciTech - Birmingham

[david.hardman@bruntwood.co.uk](mailto:david.hardman@bruntwood.co.uk)

07525 803124

### Cliff Dennett

Head of Commercial  
Bruntwood SciTech - Birmingham

[cliff.dennett@bruntwood.co.uk](mailto:cliff.dennett@bruntwood.co.uk)

07968 538989



[bruntwood.co.uk/scitech](https://bruntwood.co.uk/scitech)

A development by

**bruntwood**  
SciTech