

Ravensbourne Apartments, Central Avenue London, SW6 2GN
Offers In Excess Of £900,000

For Sale

Gray's
RESIDENTIAL

- Two-bedroom, Sixth-floor apartment
- Over 1,000 sq. ft. of contemporary living space
- Contemporary family bathroom
- fitness suite
- Private balcony overlooking landscaped podium gardens
- Open-plan living, dining, and kitchen area
- 24-hour concierge
- Close to Chelsea Harbour, Imperial Wharf Station, and the King's Road

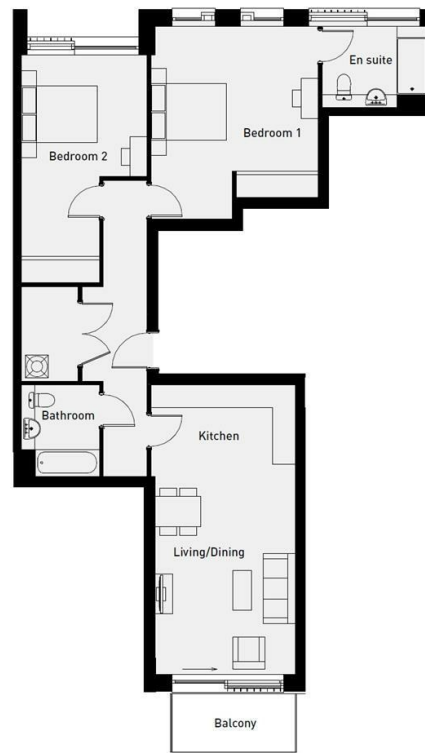
THE PROPERTY

Gray's Residential are delighted to offer this stunning two-bedroom apartment for sale in Fulham, situated in a prestigious riverside development on the River Thames. Located on the sixth floor, this contemporary apartment spans over 1,000 sq. ft., featuring a private balcony overlooking beautifully landscaped podium gardens and partial river views, combining city convenience with tranquil riverside living.

The apartment comprises: Bright and spacious open-plan living, dining, and kitchen areas, Two double bedrooms, including a modern en suite shower room, Contemporary family bathroom, Private balcony with garden and partial river views. Residents enjoy exclusive access to premium amenities, including: 24-hour concierge service, State-of-the-art fitness suite, Outdoor gym and Landscaped communal gardens.

The location offers unparalleled convenience and lifestyle opportunities, with Chelsea Harbour, Imperial Wharf Station, and the King's Road within walking distance, along with a variety of shops, restaurants, and bars. A Sainsbury's superstore is right on the development's doorstep.

This property is perfect for buyers seeking luxury apartments for sale in Fulham, riverside apartments London, or Barratt London homes with high-end interiors and modern amenities.



Total area 1011.0 sq ft 94.0 sq m