

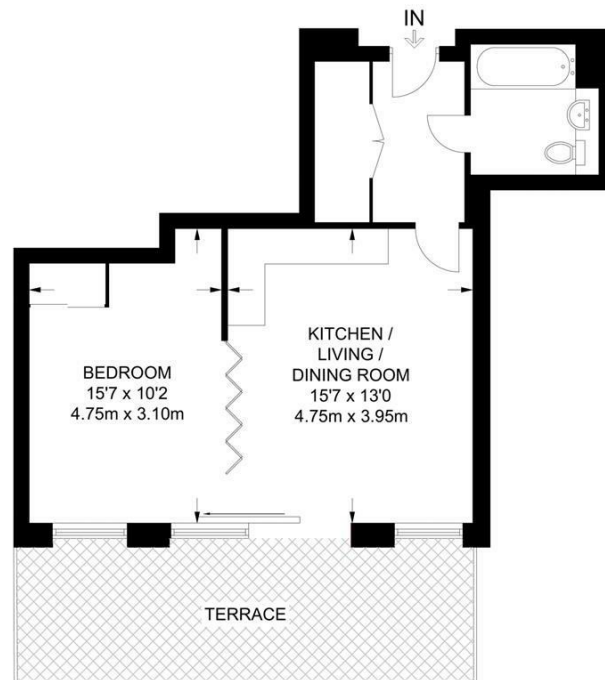


Ingrebourne Apartments, 5 Central Avenue London, SW6
£600,000

FOR SALE

Gray's
RESIDENTIAL

- A luxurious Manhattan-style apartment
- Beautifully-presented landscape podium gardens
- Onsite fitness suite
- Three-piece bathroom suite
- Situated on the fourth floor
- 24-hour concierge service
- Open-plan living/dining/kitchen area
- Private patio garden



APPROXIMATE GROSS INTERNAL AREA
471 SQ FT / 43.8 SQ M

This plan has been drawn for illustrative and identification purposes only.

Gray's Residential are extremely pleased to offer to the market this luxurious fourth floor Manhattan-style apartment to rent in Fulham Riverside. Fulham has become one of London's most desirable areas, home to a wide variety of shops, bars, restaurants., and also within a short walk from Chelsea Harbour, Imperial Wharf Station and the famous Kings Road. This apartment offers stylish contemporary interiors throughout, comprising a light and spacious open-plan living/dining/kitchen area, a Manhattan-style bedroom, a separate three-piece bathroom suite and private patio garden with views and access to the beautifully-presented landscape podium gardens. In addition, the development has a 24-hour concierge service, and onsite fitness suite.