



Vellum Drive Carshalton, SM5
£220,000

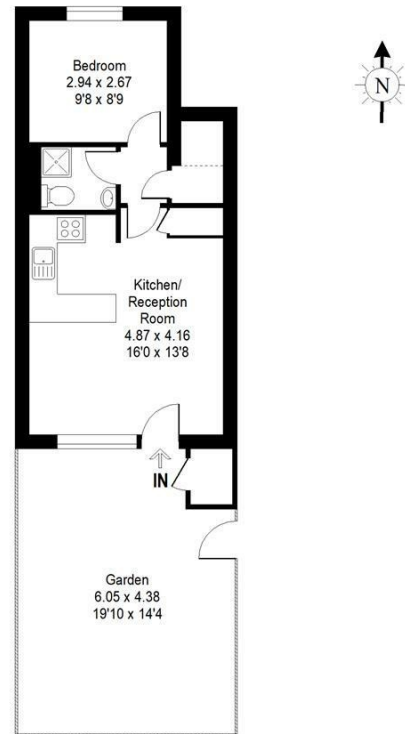
For Sale

Gray's
RESIDENTIAL

- Peaceful residential area
- Offering both tranquility and convenience,
- Bright and airy lounge
- Fully equipped kitchen
- Close to transport, shops, parks, and local amenities
- Perfect for first-time buyers, downsizers, or investors
- Private garden
- Comfortable size double bedroom

Nestled in a peaceful residential area on Vellum Drive, this delightful one-bedroom garden flat which offers a rare opportunity to enjoy modern living with the added bonus of private outdoor space, perfect for first-time buyers, downsizers, or investors, as this well-presented home is move-in ready.

Situated close to transport links, shops, parks, and local amenities, offering both tranquility and convenience, this property comprises of a bright and airy lounge with direct access to a private garden, creating the perfect indoor-outdoor flow, fully equipped with contemporary fittings and ample storage, comfortable size double bedroom, shower room and off street parking.



Ground Floor

59 Vellum Drive, Carshalton, Surrey, SM5 2TR

Total Internal Area = 368 sq ft / 34.2 sq m

Total External Area = 12 sq ft / 1.1 sq m

For identification only - Not to scale

Whilst every attempt has been made to ensure the accuracy of the floor plan contained here, measurements of doors, windows, rooms and any other items are approximate and no responsibility is taken for any error, omission or misstatement. This plan is for illustrative purposes only and should be used as such by any prospective purchaser. The services, systems and appliances shown have not been tested and no guarantee as to their operability or efficiency can be given.