

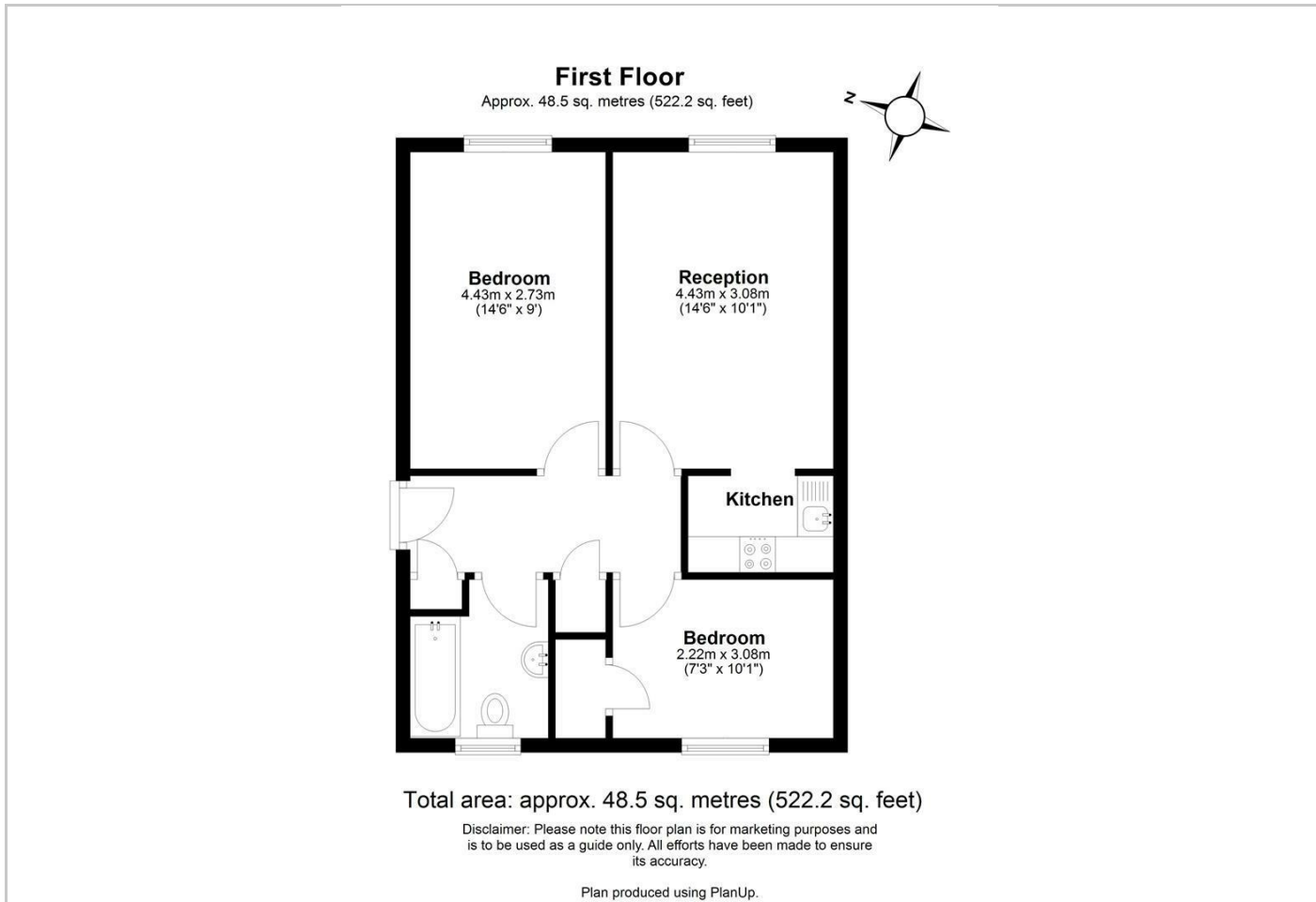


Bartholomew Close, London, SW18
Offers In Excess Of £350,000

For Sale

Gray's
RESIDENTIAL

- Two bedroom first floor flat
- Bright and spacious reception room
- Bathroom suite with overhead shower.
- Plenty of shops, restaurants and bars
- Located just moments from Wandsworth Town station
- Kitchenette
- Allocated residents parking
- Easy access to Wandsworth Town and Clapham Junction stations



Gray's Residential are pleased to present to the market this two bedroom first floor flat, located just moments from Wandsworth Town station.

The property comprises of a bright and spacious reception room with wood floors and kitchenette, two bedrooms, bathroom suite with overhead shower and allocated residents parking

Located within an attractive secure entry block, Bartholomew Close has easy access to Wandsworth Town and Clapham Junction Mainline stations, as well as plenty of shops, restaurants and bars of the surrounding area.

Great potential for someone who wishes to get involved in a small project but also fully equipped for someone who wants to invest!

Previously achieved rental income £2,000 per calendar month - £24,000 per annum

This property is offered to the market chain free