



51, Nantes Close, London, SW18 1JL

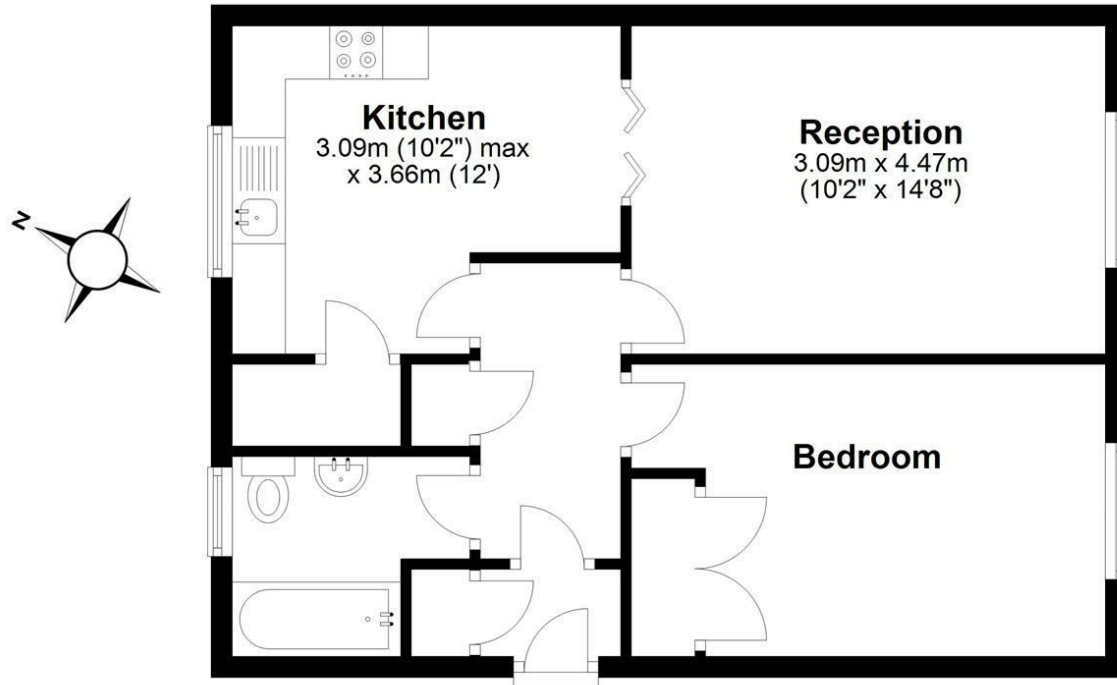
£350,000

FOR SALE

Gray's
RESIDENTIAL

First Floor

Approx. 48.9 sq. metres (526.7 sq. feet)



Total area: approx. 48.9 sq. metres (526.7 sq. feet)

Whilst every attempt has been made to ensure the accuracy of the floorplan contained here, measurements of doors, windows, rooms and any other items are approximate and no responsibility is taken for any error, omission or mis-statement. This plan is for illustrative purposes only. Plan produced using PlanUp.

THE PROPERTY

A well presented one bedroom first floor purpose built flat, offering 526 square feet of bright and airy living space on a sought after road, moments from St John's Hill and Old York Road.,
Comprises double bedroom, a light spacious reception room, bathroom with overhead shower and kitchen/breakfast room.

Nantes Close is a tree lined street at the base of St Johns Hill and is ideally placed for the cafes, bars and restaurants of both St Johns Hill and Wandsworth Old Town. Transport links include Clapham Junction and a selection of buses as well as easy access to main roads.

Whether you're a first-time buyer or looking for a lucrative investment opportunity, this property offers endless possibilities, and is offered to the market chain free.

