



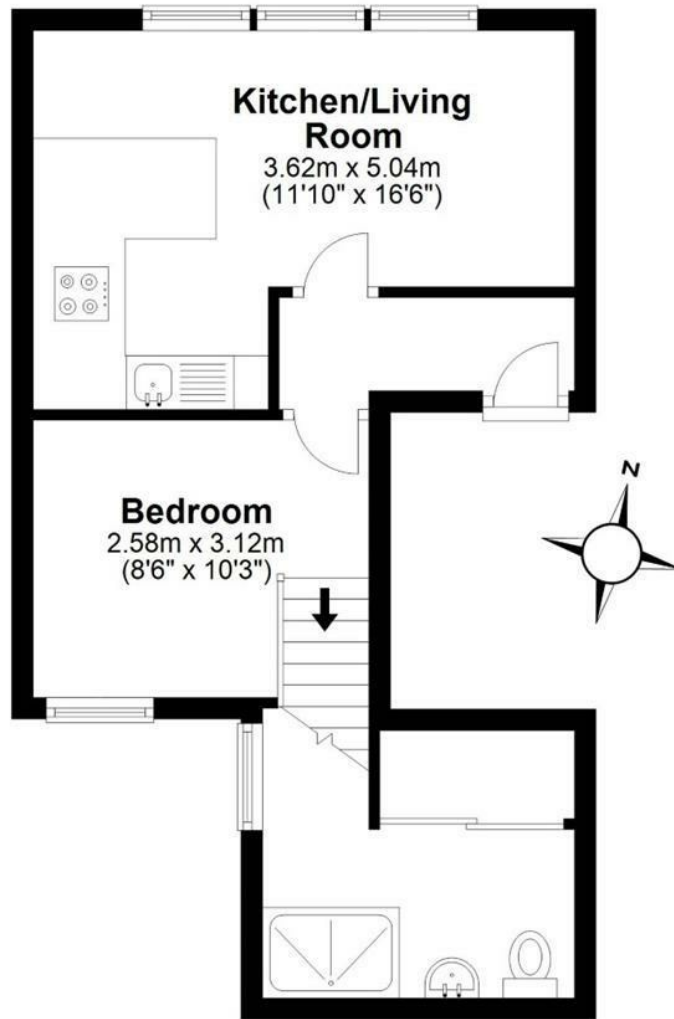
St John's Hill London SW11
Offers In Excess Of £350,000

For Sale

Gray's
RESIDENTIAL

First Floor

Approx. 33.3 sq. metres (359.0 sq. feet)



Total area: approx. 33.3 sq. metres (359.0 sq. feet)

Whilst every attempt has been made to ensure the accuracy of the floorplan contained here, measurements of doors, windows, rooms and any other items are approximate and no responsibility is taken for any error, omission or mis-statement. This plan is for illustrative purposes only.

Plan produced using PlanUp.

THE PROPERTY

A very well-presented one bedroom first floor flat for sale in heart of Clapham Junction.

Comprising a bright open-plan reception room and modern fitted kitchen, separate bedroom and sleek modern shower room with WC

Situated within minutes' walk from Clapham Junction Station (National Rail), this property is ideal for those seeking an effortless commute to the city.

The location is an advantage with all local amenities including bars, boutiques, cafes, restaurants and supermarkets within easy reach on St John's Hill, Northcote Road and Battersea Rise.

Locals also enjoy the open recreational spaces of Clapham Common close-by.

This property is available for sale, chain free