



enfields

Enfields Hythe  
3 Marsh Parade,  
Hythe, Southampton,  
Hampshire, SO45 6AN  
T 023 8084 9210  
E sales-hythe@enfields.co.uk

# 19 Elm Crescent, Hythe

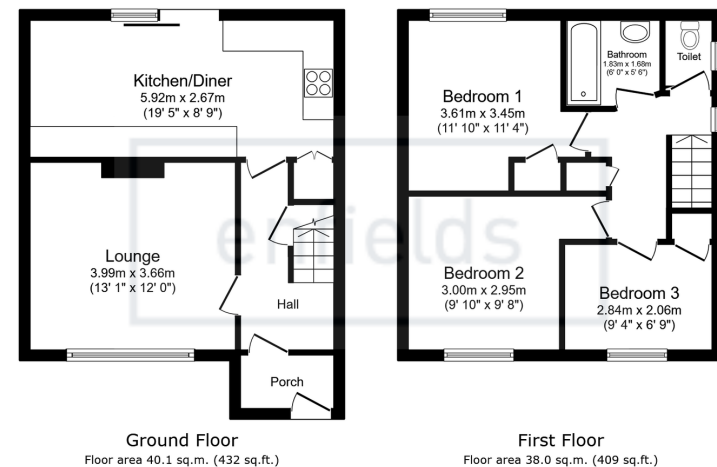
Offers Over £250,000

3 1 1



- No onward chain
- Freshly decorated
- Driveway parking
- Brick built storage shed
- Good size kitchen/diner
- New carpets
- Front & rear gardens
- Gas central heating



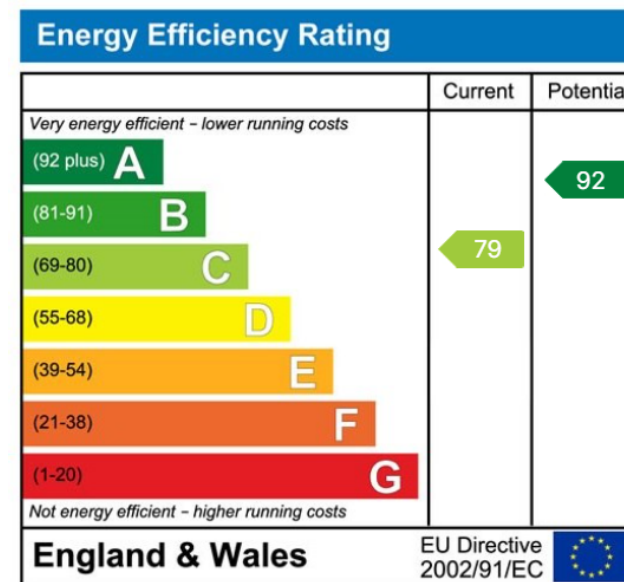


Total floor area: 78.1 sq.m. (841 sq.ft.)

This floor plan is for illustrative purposes only. It is not drawn to scale. Any measurements, floor areas (including any total floor area), openings and orientations are approximate. No details are guaranteed, they cannot be relied upon for any purpose and do not form any part of any agreement. No liability is taken for any error, omission or misstatement. A party must rely upon its own inspection(s). Powered by [www.Propertybox.io](http://www.Propertybox.io)

enfields

Offered with vacant possession, this three bedroom semi detached house has been freshly decorated with brand new carpets throughout. There is driveway parking, and gardens to the front and rear. There is also a useful brick built storage shed with power. The kitchen diner is especially spacious, with patio doors leading out to the rear garden. The porch offers ample storage space for coats, shoes etc. With two double bedrooms and one single bedroom the property is ideal for a young family. There are bus links close by into Southampton City centre.



[www.enfields-southampton.co.uk](http://www.enfields-southampton.co.uk)

It is Enfields policy to respect any sole agency currently in force and we would not be able to commence marketing until this has expired or been terminated. If you fail to terminate any previous agreement you could be liable for two sets of fees. Enfields Hythe is a trading name of YTF LTD Registered office: 345 Shirley Road, Southampton, Hampshire, England, SO15 3JD. Company Registration No: 10459987. VAT Registration No: 281 2975 81.

Enfields Lettings - Embley Management LTD T/A Enfields. Registered Address: 345 Shirley Road, Southampton, Hampshire, England, SO15 3JD. Company Registration No: 14847604. VAT Registration No: 439 8546 45.

