



enfields

Enfields Hythe
3 Marsh Parade,
Hythe, Southampton,
Hampshire, SO45 6AN
T 023 8084 9210
E sales-hythe@enfields.co.uk

Fulmar Drive, Hythe, SO45

Guide Price £210,000

🛏 2 🚿 1 🚗 1



- Ground Floor Maisonette
- Large Rear Garden
- Garage In Block
- EPC Rating C
- Two Double Bedrooms
- 135 Year Lease Remaining
- Ideal For First Time Buyers
- Double Glazed Throughout

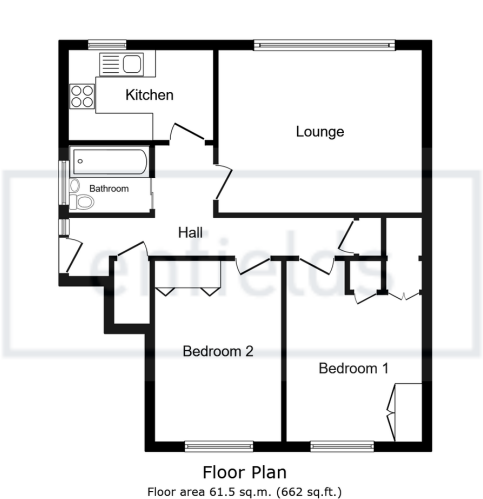


Enfields are pleased to offer to the market this ground floor two double bedroom Maisonette situated in a popular location and ideal for first time buyers or investors.

The accommodation comprises of entrance hall, ample storage space, a spacious living/ dining room with views over the rear garden, separate kitchen, bathroom with shower over bath and two double bedrooms, both with fitted wardrobes.

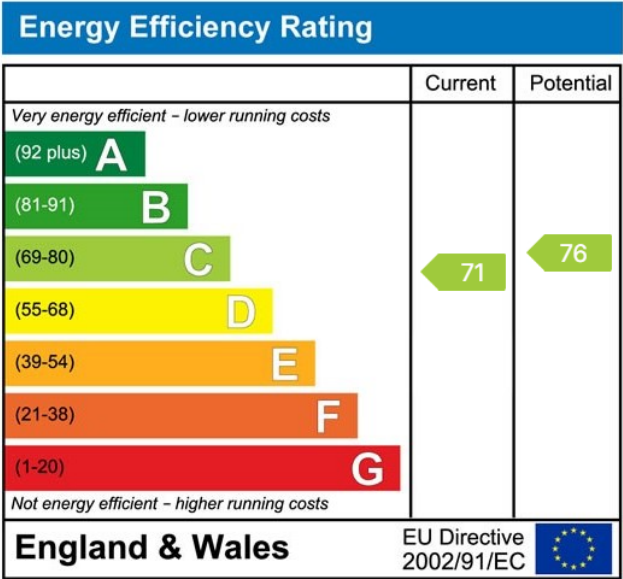
Further benefits include a large and very private rear garden, a garage in a nearby block, 135 years remaining on the lease and an EPC rating of C.

Viewing is highly recommended to fully appreciate the accommodation and location on offer.



Total floor area: 61.5 sq.m. (662 sq.ft.)

This floor plan is for illustrative purposes only. It is not drawn to scale. Any measurements, floor areas (including any total floor area), openings and orientations are approximate. No details are guaranteed, they cannot be relied upon for any purpose and do not form any part of any agreement. No liability is taken for any error, omission or misstatement. A party must rely upon its own inspection(s). Powered by www.propertybox.io



www.enfields-southampton.co.uk



It is Enfields policy to respect any sole agency currently in force and we would not be able to commence marketing until this has expired or been terminated. If you fail to terminate any previous agreement you could be liable for two sets of fees. Enfields Hythe is a trading name of YTF LTD Registered office: 345 Shirley Road, Southampton, Hampshire, England, SO15 3JD. Company Registration No: 10459987. VAT Registration No: 281 2975 81.

Enfields Lettings - Embley Management LTD T/A Enfields. Registered Address: 345 Shirley Road, Southampton, Hampshire, England, SO15 3JD. Company Registration No: 14847604. VAT Registration No: 439 8546 45.

