



enfields

Enfields Hythe
3 Marsh Parade,
Hythe, Southampton,
Hampshire, SO45 6AN
T 023 8084 9210
E sales-hythe@enfields.co.uk

Forest Side, Exbury Road, Blackfield

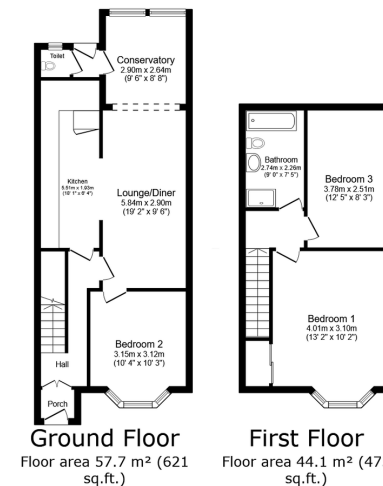
Guide Price £350,000

3 1 1



- NO FORWARD CHAIN
- GREAT OPPORTUNITY
- LARGE PRIVATE GARDEN
- CARPORT FOR 3 CARS
- 3 BEDROOMS
- SEVERAL OUTHOUSES/
SHEDS
- 500 FEET FROM THE NEW
FOREST NATIONAL PARK
- CLOSE TO LEPE BEACH
- MATURE GARDEN
- CALL TO BOOK A VIEWING
NOW





TOTAL: 101.8 m² (1,096 sq.ft.)

This floor plan is for illustrative purposes only. It is not drawn to scale. Any measurements, floor areas (including any total floor area), openings and orientations are approximate. No details are guaranteed, they cannot be relied upon for any purpose and do not form any part of any agreement. No liability is taken for any error, omission or misstatement. A party must rely upon its own inspection(s). Powered by www.Propertybox.io

NO FORWARD CHAIN

Great potential for a 3 bedroom family home with a large and private garden. This property is a diamond in the rough, and needs to be viewed to see it's full potential.

This property would be great for INVESTORS or FIRST TIME BUYERS who are looking for properties with huge potential.

It's a 3 bedroom semi-detached house, pulled back from the road. Walking distance to The New Forest and a variety of local shops and amenities. Only a short distance to the lovely Lepe beach and Calshot beach with watersports and other activities.

Potential to extend (subject to planning)

