



enfields

Enfields Hythe
3 Marsh Parade,
Hythe, Southampton,
Hampshire, SO45 6AN
T 023 8084 9210
E sales-hythe@enfields.co.uk

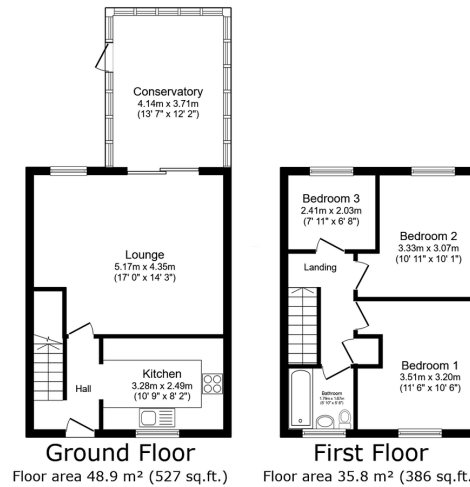
40 Oxburgh Close,
£325,000

3 1 1



- END OF TERRACE
- THREE BEDROOMS
- LARGE CONSERVATORY
- GARAGE
- DRIVEWAY FOR 2/3 VEHICLES
- FRONT AND BACK GARDEN
- FULLY RENOVATED THROUGHOUT WITH CENTRAL HEATING
- MODERN KITCHEN/BATHROOM
- CUL-DE-SAC LOCATION





TOTAL: 84.8 m² (913 sq.ft.)

This floor plan is for illustrative purposes only. It is not drawn to scale. Any measurements, floor areas (including any total floor area), openings and orientations are approximate. No details are guaranteed, they cannot be relied upon for any purpose and do not form any part of any agreement. No liability is taken for any error, omission or misstatement. A party must rely upon its own inspection(s). Powered by www.propertybox.io

This lovely three bedroom end of terrace home has been renovated throughout and has a nice and private fenced in back garden, a good size conservatory, front garden, a double drive and a garage attached to the house. All the hard work is already done here, so you can just bring your belongings and move straight in! The ground floor consists of a nice modern kitchen and a spacious diner/lounge leading out to a conservatory. From the garden you have a backdoor in to the garage, so you can keep your garden-tools dry and in reach. Upstairs, you have two double bedrooms, a single bedroom and a nicely renovated bathroom. This would make a perfect first home or buy-to-let investment. Don't miss out on this great opportunity. Call us today to arrange a viewing.

