



enfields

Enfields Hythe  
3 Marsh Parade,  
Hythe, Southampton,  
Hampshire, SO45 6AN  
T 023 8084 9210  
E sales-hythe@enfields.co.uk

# 6 Larkspur Gardens

£370,000

3 1 1



**NO ONWARD CHAIN!** We have on market in the sought after location is this generously sized three bedroom detached bungalow in Holbury, Southampton.

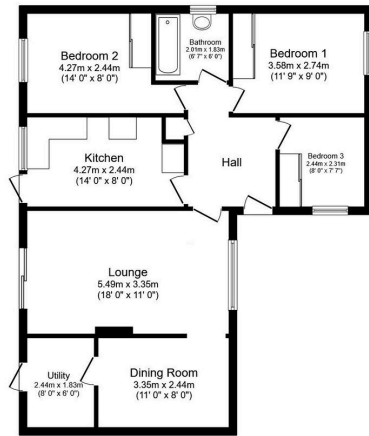
Greeted with a spacious hall through the entrance door, there is immediate access to the family living and dining space to the right of the front door. Here, you will find a large lounge space with a large sliding door granting access to the rear garden. Paired with dining space and a utility room, this layout has great potential to become one large living and dining room. Following the next room along, the kitchen also backs on to the rear garden with a door for access again. Should those who like working on a project be interested, the availability to convert the kitchen space and lounge into one large open-plan space would make use of the potential of this property.

Next to the kitchen, the second bedroom is found. This room comes with a built-in wardrobe and a large rear-facing window. Next to this bedroom, you will find the bathroom, master bedroom with more built-in storage and the third bedroom is a single bedroom, also with built in storage.

The garden is bright and decently sized, being private and not overlooked. Side access is also available here, leading down the left of the property to the large double-driveway.

This property is close to local amenities in Holbury central, a short walk from a local Bus route and only a stones throw away from the local country park.



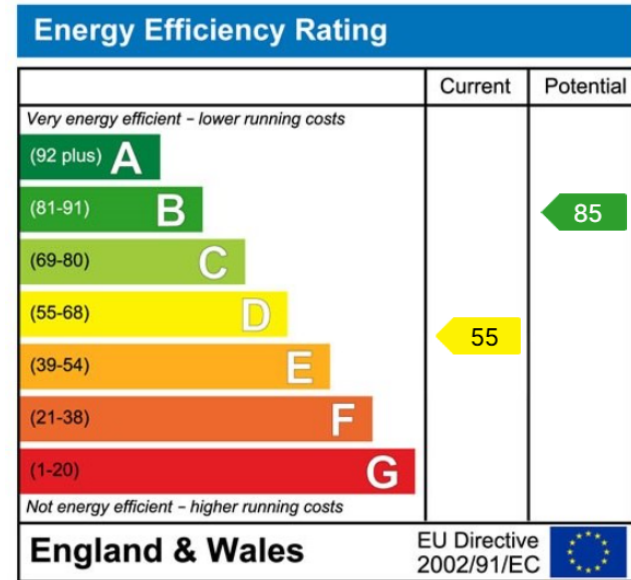


**Floor Plan**  
 Floor area 81.0 sq.m. (872 sq.ft.)

TOTAL: 81.0 sq.m. (872 sq.ft.)

This floor plan is for illustrative purposes only. It is not drawn to scale. Any measurements, floor areas (including any total floor area), openings and orientations are approximate. No details are guaranteed, they cannot be relied upon for any purpose and do not form any part of any agreement. No liability is taken for any error, omission or misstatement. A party must rely upon its own inspection(s). Powered by www.propertybox.co.uk

- NO CHAIN!
- Spacious Living Areas
- Built-In Storage
- Open-Plan Living/Dining
- Two Double Bedrooms
- Great Potential
- Large Driveway
- Close to Amenities
- Close to Bus Route
- Call us to book a viewing!



[www.enfields-southampton.co.uk](http://www.enfields-southampton.co.uk)



It is Enfields policy to respect any sole agency currently in force and we would not be able to commence marketing until this has expired or been terminated. If you fail to terminate any previous agreement you could be liable for two sets of fees. Enfields Hythe is a trading name of YTF LTD Registered office: 345 Shirley Road, Southampton, Hampshire, England, SO15 3JD. Company Registration No: 10459987. VAT Registration No: 281 2975 81.

Enfields Lettings - Embley Management LTD T/A Enfields. Registered Address: 345 Shirley Road, Southampton, Hampshire, England, SO15 3JD. Company Registration No: 14847604. VAT Registration No: 439 8546 45.

