



enfields

Enfields Hythe  
3 Marsh Parade,  
Hythe, Southampton,  
Hampshire, SO45 6AN  
T 023 8084 9210  
E sales-hythe@enfields.co.uk

# Sloane Court, Sloane Avenue, Holbury, SO45

Guide Price £250,000

🛏️ 2 🚿 1 🚗 0



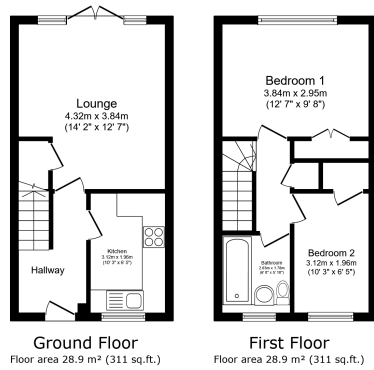
A two bedroom terraced house situated within a quiet cul-de-sac and available for sale with no forward chain. This property has been fully refurbished throughout by the current owners, including brand new kitchen and bathroom.

The ground floor comprises of spacious entrance hall, modern kitchen with integrated oven and hob, large living/dining room with storage cupboard and French doors out to a new decking area and rear garden.

Upstairs there are two bedrooms, including main bedroom with a built in double wardrobe and second bedroom with a single built in wardrobe. The bathroom has been completely refurbished and includes shower over bath.

Further benefits include a low maintenance front garden, gas central heating, double glazing throughout, all new internal doors, carpets and flooring. Viewing is highly recommended.

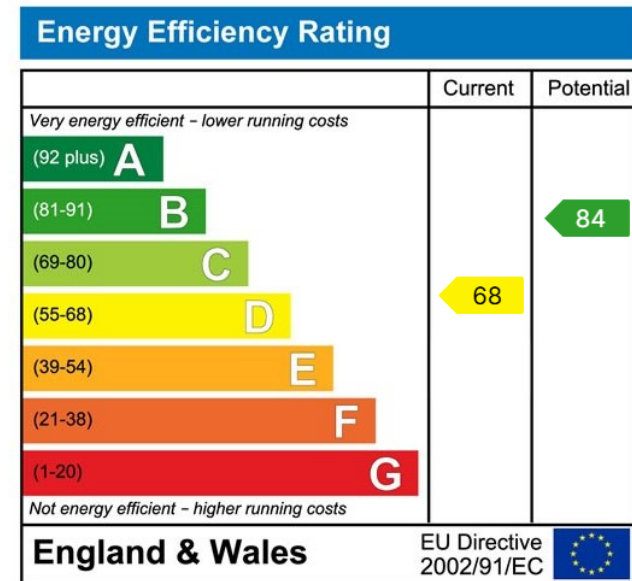




TOTAL: 57.9 m<sup>2</sup> (623 sq.ft.)

This floor plan is for illustrative purposes only. It is not drawn to scale. Any measurements, floor areas (including any total floor area), openings and orientations are approximate. No details are guaranteed, they cannot be relied upon for any purpose and do not form any part of any agreement. No liability is taken for any error, omission or misstatement. A party must rely upon its own inspection(s). Powered by www.Propertybox.io

- Vacant Possession
- Two Bedrooms
- Brand New Kitchen
- Generous Size Rear Garden
- Cul-De-Sac Location
- Terraced House
- Fully Refurbished
- Brand New Bathroom
- New Carpets & Flooring Throughout
- Communal Parking



[www.enfields-southampton.co.uk](http://www.enfields-southampton.co.uk)



It is Enfields policy to respect any sole agency currently in force and we would not be able to commence marketing until this has expired or been terminated. If you fail to terminate any previous agreement you could be liable for two sets of fees. Enfields Hythe is a trading name of YTF LTD Registered office: 345 Shirley Road, Southampton, Hampshire, England, SO15 3JD. Company Registration No: 10459987. VAT Registration No: 281 2975 81.

Enfields Lettings - Embley Management LTD T/A Enfields. Registered Address: 345 Shirley Road, Southampton, Hampshire, England, SO15 3JD. Company Registration No: 14847604. VAT Registration No: 439 8546 45.