



Enfields Hythe
3 Marsh Parade,
Hythe, Southampton,
Hampshire, SO45 6AN
T 023 8084 9210
E sales-hythe@enfields.co.uk

17 Wedgewood Close, Holbury

Guide Price £300,000

3 2 3



New to the market is this three bedroom family home situated in a cul-de-sac location in the centre of Holbury, . Complete with a modern kitchen and two bathrooms, two generously sized double bedrooms and a third single bedroom. This home also has solar panels offering cost effective living.

Making an entrance through the front porchway with plenty of storage, we are greeted by a spacious living room with a bay-window, double doors leading to the dining room with immediate access to the very modern kitchen. Downstairs also benefits from a side extension which consists of a shower room/W/C and utility space. A generous size conservatory overlooking the private rear garden completes the ground floor accommodation.

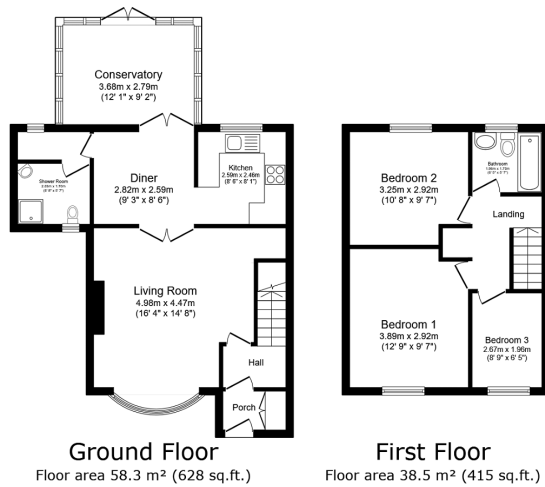
Upstairs has a good sized bathroom and three bedrooms, two double bedrooms with built-in wardrobes and a single bedroom which could also be used as an office.

Further benefits include a large front garden, private rear garden with side access to residential parking area, and a carport for one car. Viewing is highly recommended to fully appreciate the accommodation and location on offer.



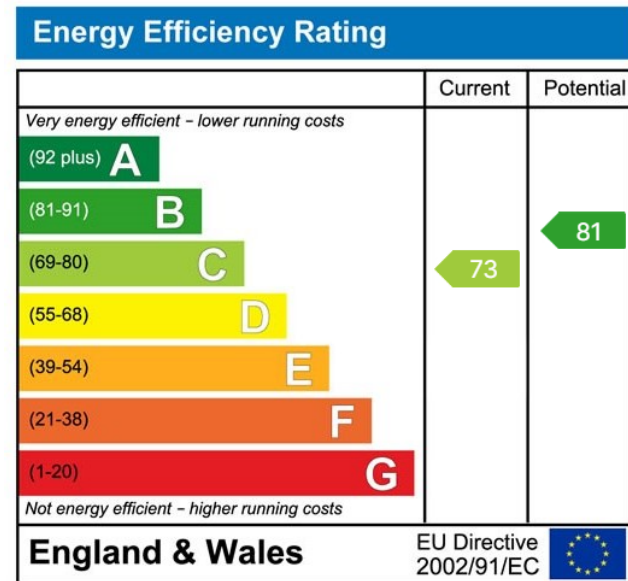


- No Forward Chain
- Side Extension
- Carport Parking
- Three Reception Rooms
- Conservatory
- Ground Floor Shower room
- Three Bedrooms
- Modern Kitchen
- Private Rear Garden
- Cul-De-Sac Location



TOTAL: 96.9 m² (1,043 sq.ft.)

This floor plan is for illustrative purposes only. It is not drawn to scale. Any measurements, floor areas (including any total floor area), openings and orientations are approximate. No details are guaranteed, they cannot be relied upon for any purpose and do not form any part of any agreement. No liability is taken for any error, omission or misstatement. A party must rely upon its own inspection(s). Powered by www.propertybox.co



www.enfields-southampton.co.uk



It is Enfields policy to respect any sole agency currently in force and we would not be able to commence marketing until this has expired or been terminated. If you fail to terminate any previous agreement you could be liable for two sets of fees. Enfields Hythe is a trading name of YTF LTD Registered office: 345 Shirley Road, Southampton, Hampshire, England, SO15 3JD. Company Registration No: 10459987. VAT Registration No: 281 2975 81.

Enfields Lettings - Embley Management LTD T/A Enfields. Registered Address: 345 Shirley Road, Southampton, Hampshire, England, SO15 3JD. Company Registration No: 14847604. VAT Registration No: 439 8546 45.

