



Enfields Hythe
3 Marsh Parade,
Hythe, Southampton,
Hampshire, SO45 6AN
T 023 8084 9210
E sales-hythe@enfields.co.uk

14 Wheelers Walk, Blackfield

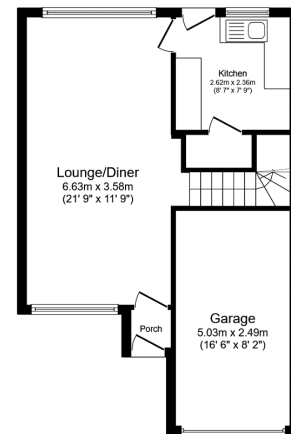
Guide Price £300,000

3 1 1

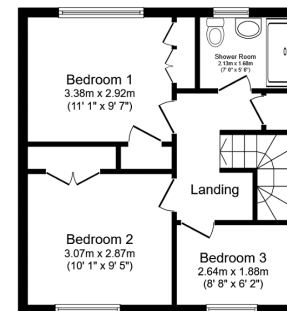


- No Forward Chain
- Open Planned Living/Dining Room
- Cul-De-Sac Location
- Shower Room
- Integral Garage
- Three Bedrooms
- Driveway Parking Room
- Private Rear Garden
- Large Front Garden
- Popular Location





Ground Floor
Floor area 50.0 m² (538 sq.ft.)



First Floor
Floor area 41.4 m² (446 sq.ft.)

TOTAL: 91.4 m² (984 sq.ft.)

This floor plan is for illustrative purposes only. It is not drawn to scale. Any measurements, floor areas (including any total floor area), openings and orientations are approximate. No details are guaranteed, they cannot be relied upon for any purpose and do not form any part of any agreement. No liability is taken for any error, omission or misstatement. A party must rely upon its own inspection(s). Powered by www.Property24.co

A three bedroom semi detached family home in need of modernisation and available for sale with no forward chain.

