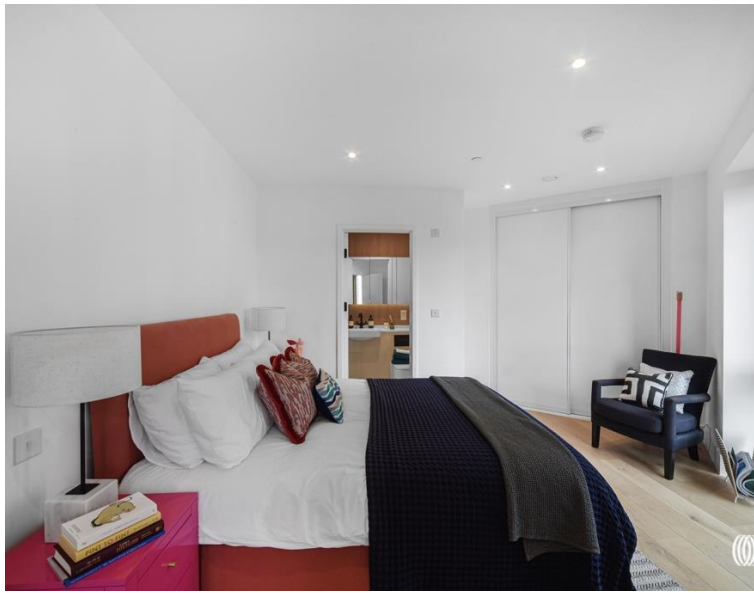


**Capital Interchange Way, Brentford TW**  
£653,000 Leasehold









## Description

A brand new luxury two bedroom apartment for sale in the new Verdo development in Kew Bridge. Arranged over the sixth floor, the property comprises open plan kitchen/reception room, two double bedrooms with built in storage, large bathroom, en-suite and a private balcony. All residents will benefit from luxury on site amenities including a concierge, residents' lounge, fully equipped gym, cinema room, work zones and residents' podium gardens.

Verdo is an impressive collection of apartments in a blossoming new neighbourhood. Be in the heart of a community-centric destination and look forward to bustling weekend markets, cosy mornings in your local café, social nights in the residents' lounge and serene evening walks in the gardens.

The development is located at the heart of Brentford and puts you in touching distance of some of London's best-loved highstreets for some all-important retail therapy with Chiswick and Richmond High Streets located close by. Kew Bridge station is just a few minutes' walk away and Gunnersbury tube station only a 10 minute stroll, Verdo has great transport links connecting you to central London in just 24 minutes.

\*All images used are for illustrative purposes only and do not represent actual property. Furniture and dimensions for this property type may differ.

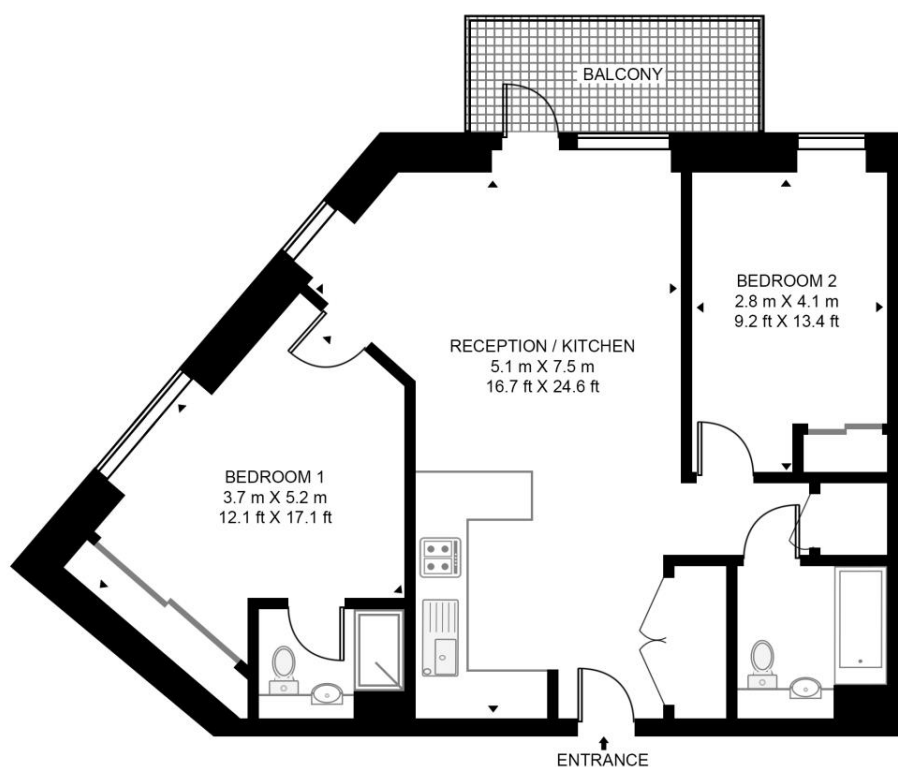
- 2 Double bedrooms
- 2 Bathrooms (1 en-suite)
- Open-plan Kitchen/Reception
- Private west-facing balcony
- Concierge
- Resident only leisure facilities
- Kew Bridge station within 360 yards
- Gunnersbury Park within half a mile
- Approx. 775 sq ft / 71.7 sq m

# Floorplan

766 sq ft | 71 sq m

## LILY HOUSE, VERDO

APPROXIMATE GROSS INTERNAL FLOOR AREA 766 SQ.FT (71.2 SQ.M)



SIXTH FLOOR



This floor plan has been defined by the RICS Code of Measurement. This floor plan and all others are for approximate representative purposes only and upon usage is agreed to as such by the client.

WWW: [hdvirtualart.com](http://hdvirtualart.com) | TEL: 0203.974.1567 | EMAIL: [info@hdvirtualart.com](mailto:info@hdvirtualart.com)

Kew Bridge  
12 Capital Interchange Way,  
London TW8 0SP  
020 3147 1880  
[lettingskewbridge@jll.com](mailto:lettingskewbridge@jll.com)

*Urban living, your way.*

[jll.co.uk/residential](http://jll.co.uk/residential)

© 2019 Jones Lang LaSalle IP, Inc. All rights reserved. All information contained herein is from sources deemed reliable; however, no representation or warranty is made to the accuracy thereof.

