



Pavana Square, Brentford TW8

Price £2,825 per month - Unfurnished





Description

This spacious two-bedroom apartment features an open-plan kitchen, dining, and living area that flows onto your private east facing balcony—perfect for enjoying those stunning views across Kew Bridge and Chiswick.

Enjoy cooking? You'll love the contemporary kitchen with integrated appliances and sleek matt-finish units.

Master bedroom with on-suite bathroom is a bright and airy retreat, complete with full-height windows and a fitted wardrobe for easy storage.

Second bedroom is leading to the west facing balcony which is perfect for sunsets.

The modern family bathroom blends style and comfort with sleek white fixtures, matte black accents, and large format tiles. The full-size bath with a glass screen and overhead shower offers a relaxing retreat. A feature mirror cabinet with LED lighting and a heated towel rail add both functionality and luxury.

But it's not just the apartment that shines. Step outside and you're just a two-minute stroll from Kew Bridge Station, a quick 10-minute walk to Gunnersbury, and only moments away from the River Thames. Need more? The building offers a private state-of-the-art gym, innovative co-working spaces, meeting rooms, and an exclusive concierge service.

*Images are CGI and are for indicative purposes only.

- Open-plan kitchen/living/dining
- 2 x Private balconies with stunning views
- Fully integrated kitchen appliances
- Bedroom with fitted wardrobe
- Concierge services

Two minutes' walk to Kew Bridge Station

Private state of the art residents' gym

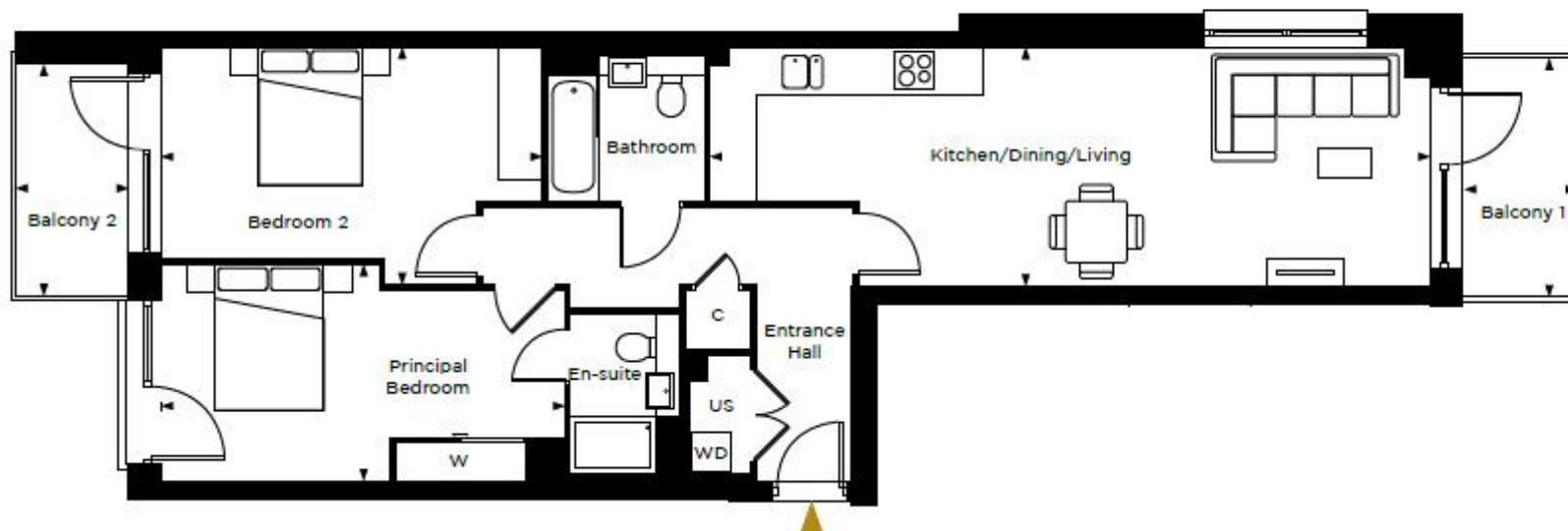
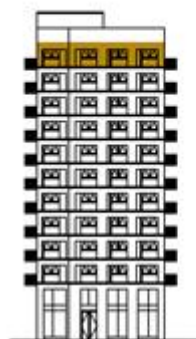
EPC: B



Floorplan

902 sq ft | 84 sq m

Floor 11



2 BEDROOM APARTMENT

Kitchen / Dining / Living	9.95m x 3.30m	32'9" x 10'10"
Principal Bedroom	5.55m x 3.00m	18'3" x 9'10"
Bedroom 2	5.25m x 3.25m	17'3" x 10'9"
Balcony 1	1.55m x 3.30m	5'1" x 10'9"
Balcony 2	1.55m x 3.15m	5'1" x 10'5"

Total size: 902 sq ft

Kew Bridge
12 Capital Interchange Way,
London TW8 0SP
020 3147 1880
lettingskewbridge@jll.com

Urban living, your way.

jll.co.uk/residential

© 2019 Jones Lang LaSalle IP, Inc. All rights reserved. All information contained herein is from sources deemed reliable; however, no representation or warranty is made to the accuracy thereof.

