



2 Floors



4 Bedrooms



1 En suite



Utility

WOLLATON FOUR BEDROOM HOME

A four bedroom detached home with spacious lounge and fantastic open plan kitchen / dining and family area featuring a bay window and French doors leading to the rear garden. Upstairs, is the family bathroom and four bedrooms, the master bedroom benefitting from fitted wardrobes and en suite facilities.

WOLLATON FOUR BEDROOM HOME

⬢ DIMENSIONS

First Floor:

Bedroom 1

2.88m x 3.68m
9'6" x 12'1"

En Suite

Bedroom 2

3.70m x 2.47m
12'2" x 8'1"

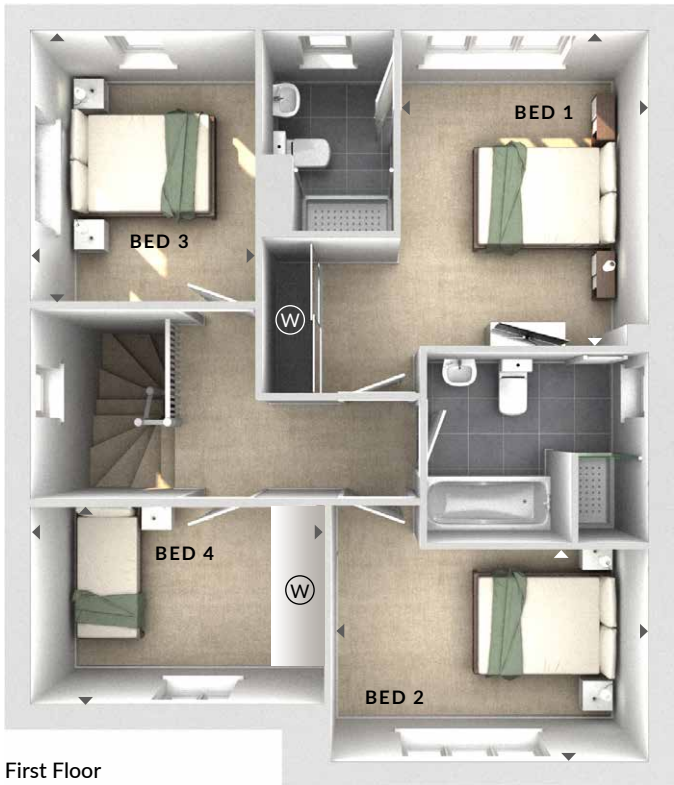
Bedroom 3

2.61m x 3.15m
8'7" x 10'4"

Bedroom 4

3.43m x 2.28m
11'3" x 7'6"

Bathroom



Ground Floor:

Lounge

4.11m x 4.15m
13'6" x 13'7"

Kitchen / Dining / Family

7.20m x 4.25m
23'8" x 13'11"

(W) Wardrobes

*Wardrobes to bed 4 indicated in selected plots only. Please speak to Sales Advisor for details.

(U) Utility

(C) Cloaks

◀▶ Measurement Points

△ External Access

