



Harrier Close, Cottesmore

Situated in the desirable village of Cottesmore, this beautifully extended four-bedroom link-detached home enjoys stunning open field views to the rear and offers immaculate, move-in ready accommodation.

FEATURES

- Beautifully extended four-bedroom link-detached home
- Principal bedroom with built-in wardrobes and stylish en-suite
- Four Comfortable Bedrooms
- Stunning open field views to the rear
- Spacious lounge/diner with log burner and French doors to the garden
- Sought-after village location





ACCOMMODATION

On entering the property, you're welcomed into a light and airy entrance hall, with stairs rising to the first floor and doors leading to the kitchen, lounge/diner, W.C , and an understairs storage cupboard. The kitchen, positioned to the front of the home and has space and plumbing for a dishwasher, an integrated wine rack, kickboard lighting, and elegant wood effect flooring. To the rear, the spacious lounge/diner enjoys plenty of natural light complete with an inset log burner and French doors opening to the garden. A further door leads to the study/hobby room, which benefits from three Velux skylights and French doors to the garden.

Upstairs, the property offers four bedrooms. The principal bedroom features built-in wardrobes and a modern en-suite. Bedroom two also enjoys rear aspect views across the open fields. Bedrooms three and four are positioned at the front of the home, both offering good natural light via front-facing windows. The family bathroom is a true highlight, showcasing a freestanding oval bath with LED up lighting and stainless-steel fittings, a contemporary square basin inset to a vanity unit, and a privacy window to the rear aspect.

To book a viewing call our area experts

www.mooresestateagents.com

Moores Property Hub 01572 757979 | Moores Move to the Country 020 301 11361
 Melton 01664 491610 | Uppingham 01572 821935 | Stamford 01780 484555
 Grantham Meet & Greet 01476 855618 | Peterborough Meet & Greet 01733 788888
 A1 Meet & Greet Stoke Rochford | office@mooresestateagents.com



EXTERNAL

Externally, the home offers a landscaped, low-maintenance front garden, with a path leading to the front door. A driveway provides off-road parking for multiple vehicles and leads to a single garage with a remote-controlled electric roller door. To the rear, the south-facing garden is fully enclosed, mainly laid to lawn, and includes two patio seating areas with uninterrupted views of open countryside.



Cottesmore is a popular Rutland village offering a close-knit community feel along with a range of local amenities, including a village shop, pub, primary school, and recreational facilities. Surrounded by beautiful countryside, it provides excellent access to nearby market towns such as Oakham and Uppingham, while also offering convenient transport links to Leicester, Peterborough, and Stamford via road or nearby rail connections from Oakham station.

To book a viewing call our area experts

www.mooresestateagents.com

Moores Property Hub 01572 757979 | Moores Move to the Country 020 301 11361
 Melton 01664 491610 | Uppingham 01572 821935 | Stamford 01780 484555
 Grantham Meet & Greet 01476 855618 | Peterborough Meet & Greet 01733 788888
 A1 Meet & Greet Stoke Rochford | office@mooresestateagents.com

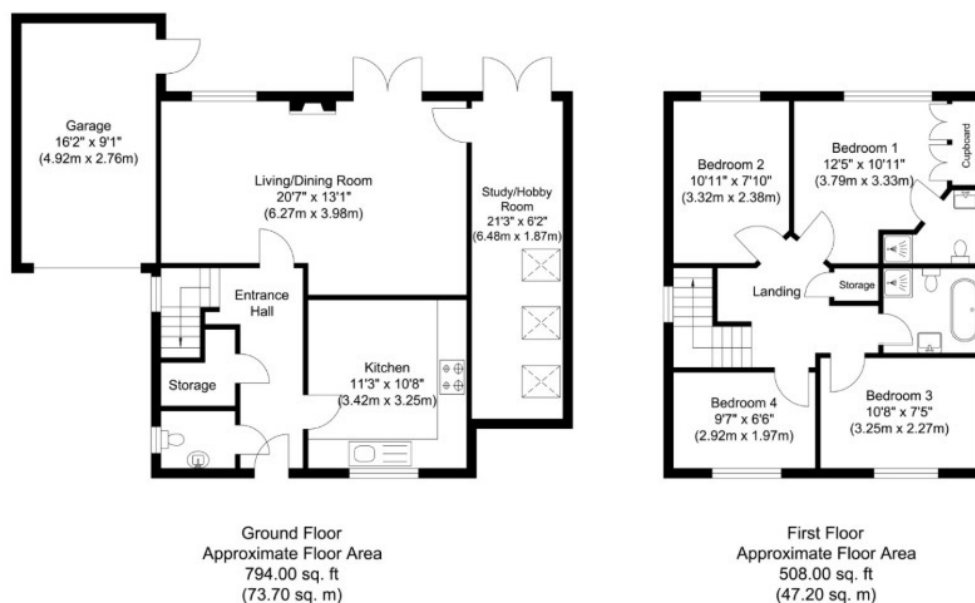
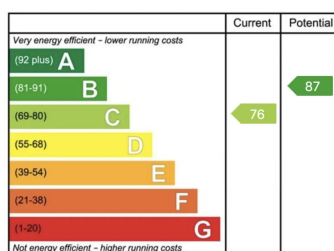


Illustration for identification purposes only, measurements are approximate, not to scale.

EPC RATING



To book a viewing call our area experts:

Moores Property Hub
Moores Move to the Country
Melton
Uppingham
Stamford
Grantham Meet & Greet
Peterborough Meet & Greet
A1 Meet & Greet Stoke Rochford

01572 757979
020 301 11361
01664 491610
01572 821935
01780 484555
01476 855618
01733 788888

Follow us for Property Updates



@mooresestateagents



@mooresestatepropertyhub

For short, informative videos on our areas, please click here: <https://mooresestateagents.com/minute-guides/>

Moore V Ltd trading as Moores Estate Agents gives notice that: 1. These particulars do not constitute an offer or contract or part thereof. 2. All descriptions, photographs and plans are for guidance only and should not be relied upon as statements or representations of fact. All measurements are approximate and not necessarily to scale. Any prospective purchaser must satisfy themselves of the correctness of the information within the particulars by inspection or otherwise. 3. Moore V Ltd trading as Moores Estate Agents does not have any authority to give any representations or warranties whatsoever in relation to this property (including but not limited to planning/building regulations), nor can it enter into any contract on behalf of the Vendor. 4. Moore V Ltd trading as Moores Estate Agents does not accept responsibility for any expenses incurred by prospective purchasers in inspecting properties which have been sold, let or withdrawn. 5. If there is anything of particular importance to you, please contact this office and we will try to have the information checked for you.