



Withers Close, Oakham

Attractive four-bedroom detached home in a quiet Oakham cul-de-sac, featuring an open-plan kitchen/diner with decking, bay-fronted lounge, en-suite to main bedroom, enclosed garden, garage, and off-road parking.

FEATURES

- Detached Family Home Situated In A Prime Location
- Open-Plan Kitchen/Dining Room
- Four Comfortable Bedrooms
- Enclosed Rear Garden
- Off Road Parking & Garage
- Walking Distance To Amenities





ACCOMMODATION

This beautifully presented home opens into a welcoming hallway, complete with a cloakroom for added convenience. The spacious reception room, featuring a charming bay window, offers a cosy yet elegant setting. To the rear, the impressive open-plan kitchen and dining room spans the full width of the property, boasting generous proportions and contemporary fittings. French doors lead directly out to the garden, enhancing the flow of indoor-outdoor living.

Upstairs, the property provides four well-proportioned bedrooms. The principal bedroom benefits from its own en-suite, while the remaining bedrooms are served by a stylish family bathroom. Bedroom 2 is particularly spacious and could easily accommodate a desk area for home working or study, while Bedroom 4, though compact, would make an ideal nursery or office.

To book a viewing call our area experts

www.mooresestateagents.com

Moores Property Hub 01572 757979 | Moores Move to the Country 020 301 11361
 Melton 01664 491610 | Uppingham 01572 821935 | Stamford 01780 484555
 Grantham Meet & Greet 01476 855618 | Peterborough Meet & Greet 01733 788888
 A1 Meet & Greet Stoke Rochford | office@mooresestateagents.com



EXTERNAL

To the front, the property benefits from off-road parking and access to a single garage. The rear garden is fully enclosed with a raised decking area is situated directly outside the kitchen patio doors.

Situated on the sought-after Withers Close in Oakham, this home enjoys a peaceful cul-de-sac setting within easy reach of the town centre. Oakham offers a wealth of amenities including independent shops, restaurants, excellent schooling, and a mainline railway station. The location also provides convenient access to Rutland Water, ideal for outdoor pursuits and scenic walks, making it perfect for families and professionals alike.

To book a viewing call our area experts

www.mooresestateagents.com

Moores Property Hub 01572 757979 | Moores Move to the Country 020 301 11361
Melton 01664 491610 | Uppingham 01572 821935 | Stamford 01780 484555
Grantham Meet & Greet 01476 855618 | Peterborough Meet & Greet 01733 788888
A1 Meet & Greet Stoke Rochford | office@mooresestateagents.com

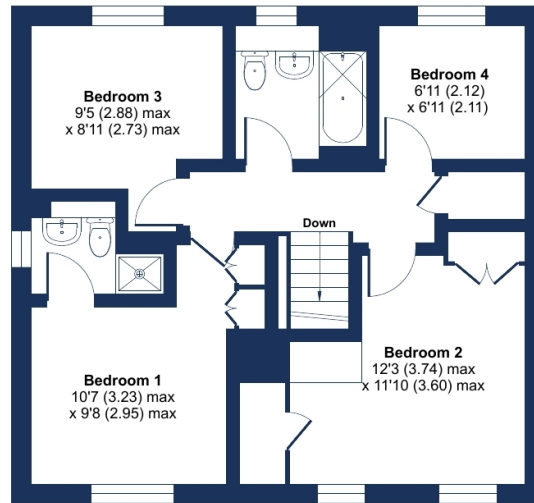
Withers Close, Oakham, LE15

Approximate Area = 1179 sq ft / 109.5 sq m

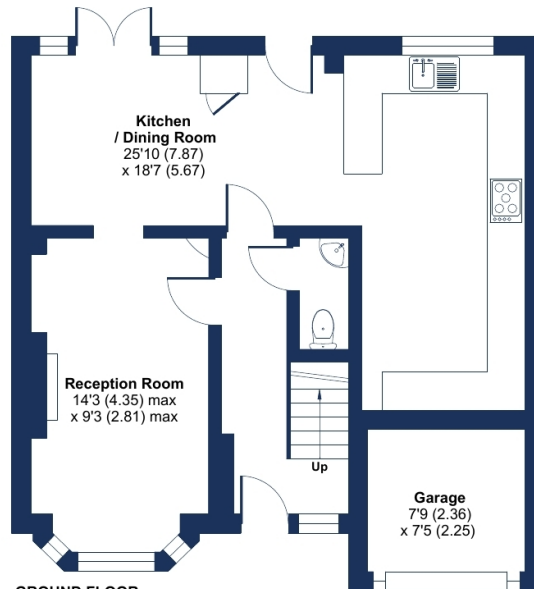
Garage = 60 sq ft / 5.5 sq m

Total = 1239 sq ft / 115 sq m

For identification only - Not to scale



FIRST FLOOR



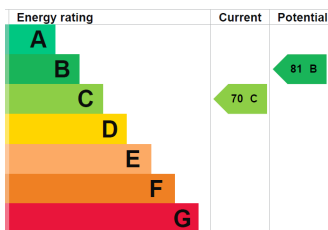
GROUND FLOOR



Floor plan produced in accordance with RICS Property Measurement 2nd Edition, Incorporating International Property Measurement Standards (IPMS2 Residential). © nchecon 2025. Produced for Moores Estate Agents. REF: 1296349



EPC RATING



To book a viewing call our area experts:

Moores Property Hub
Moores Move to the Country
Melton
Uppingham
Stamford
Grantham Meet & Greet
Peterborough Meet & Greet
A1 Meet & Greet Stoke Rochford

01572 757979
020 301 11361
01664 491610
01572 821935
01780 484555
01476 855618
01733 788888

Follow us for Property Updates



@mooresestateagents



@mooresestatepropertyhub

For short, informative videos on our areas, please click here: <https://mooresestateagents.com/minute-guides/>

Moore V Ltd trading as Moores Estate Agents gives notice that: 1. These particulars do not constitute an offer or contract or part thereof. 2. All descriptions, photographs and plans are for guidance only and should not be relied upon as statements or representations of fact. All measurements are approximate and not necessarily to scale. Any prospective purchaser must satisfy themselves of the correctness of the information within the particulars by inspection or otherwise. 3. Moore V Ltd trading as Moores Estate Agents does not have any authority to give any representations or warranties whatsoever in relation to this property (including but not limited to planning/building regulations), nor can it enter into any contract on behalf of the Vendor. 4. Moore V Ltd trading as Moores Estate Agents does not accept responsibility for any expenses incurred by prospective purchasers in inspecting properties which have been sold, let or withdrawn. 5. If there is anything of particular importance to you, please contact this office and we will try to have the information checked for you.