



Sycamore Road, North Luffenham

Immaculately Presented Three-Bedroom Bungalow
on a Generous Corner Plot offered with NO CHAIN.



FEATURES

- Detached Bungalow Situated
On A Corner Plot
- Immaculately Presented
- Three Comfortable Bedrooms
- Enclosed Rear Garden
- Off Road Parking & Double Garage
- Village Location
- NO ONWARD CHAIN

The #1 Agent in the area bringing London & out of area buyers to your door.



ACCOMMODATION

Situated in the sought-after village of North Luffenham, this well-presented three-bedroom detached bungalow enjoys a generous corner plot, offering plenty of space both inside and out. With a double garage, spacious living areas, and a well-maintained interior, this home is ideal for those seeking comfortable single-level living. Step inside to find a bright and airy entrance hall leading to a generously sized living/dining room, complete with a charming bay window that floods the space with natural light. The kitchen is well-equipped, offering ample storage and workspace, with easy access to the garden.

The three bedrooms are well-proportioned, with the main bedroom boasting excellent space for wardrobes and furniture. A family bathroom completes the accommodation.

To book a viewing call our area experts

www.mooresestateagents.com

Moore's Property Hub 01572 757979 | Moore's Move to the Country 020 301 11361
 Melton 01664 491610 | Uppingham 01572 821935 | Stamford 01780 484555
 Grantham Meet & Greet 01476 855618 | Peterborough Meet & Greet 01733 788888
 A1 Meet & Greet Stoke Rochford | office@mooresestateagents.com



EXTERNAL

Outside, the bungalow benefits from a wrap-around garden, providing plenty of outdoor space for relaxing or entertaining. The double garage offers excellent storage or workshop potential, with additional driveway parking.

North Luffenham is a delightful village positioned just a stones' throw from Rutland Water. The village offers amenities including church, popular public house and primary school. The market towns of Oakham, Uppingham and Stamford are all within easy reach providing further amenities and train stations with links to Peterborough for mainline trains to London.

To book a viewing call our area experts

www.mooresestateagents.com

Moore's Property Hub 01572 757979 | Moore's Move to the Country 020 301 11361
Melton 01664 491610 | Uppingham 01572 821935 | Stamford 01780 484555
Grantham Meet & Greet 01476 855618 | Peterborough Meet & Greet 01733 788888
A1 Meet & Greet Stoke Rochford | office@mooresestateagents.com

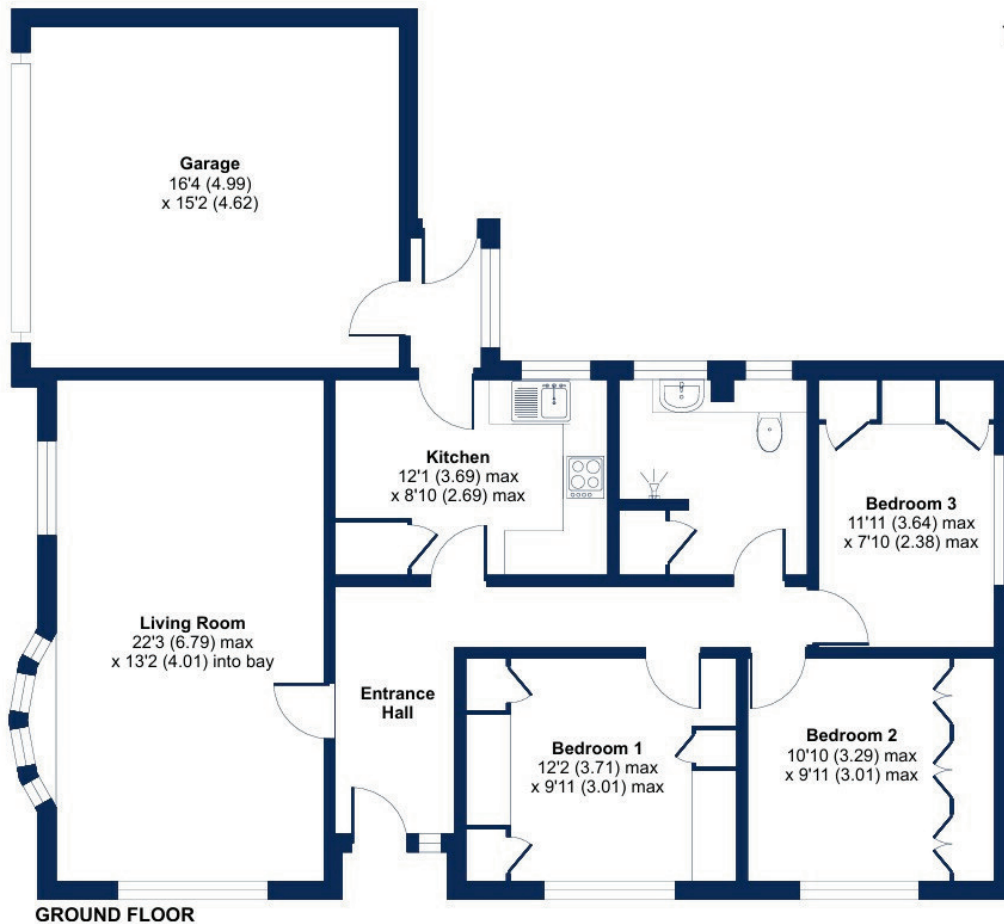
Sycamore Road, North Luffenham, Oakham, L

Approximate Area = 940 sq ft / 87

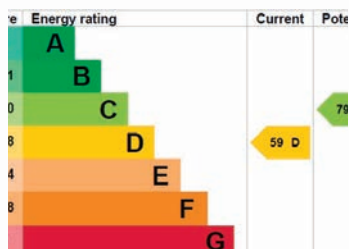
Garage = 248 sq ft / 2

Total = 1188 sq ft / 110

For identification only - 1



EPC RATING



To book a viewing call our area experts:

Moores Property Hub	01572 757979
Moores Move to the Country	020 301 11361
Melton	01664 491610
Uppingham	01572 821935
Stamford	01780 484555
Grantham Meet & Greet	01476 855618
Peterborough Meet & Greet	01733 788888
A1 Meet & Greet Stoke Rochford	

Follow us for Property Updates



@mooresestateagents



@mooresestatepropertyhub

For short, informative videos on our areas, please click here: <https://mooresestateagents.com/minute-guides/>

Moore V Ltd trading as Moores Estate Agents gives notice that: 1. These particulars do not constitute an offer or contract or part thereof. 2. All descriptions, photographs and plans are for guidance only and should not be relied upon as statements or representations of fact. All measurements are approximate and not necessarily to scale. Any prospective purchaser must satisfy themselves of the correctness of the information within the particulars by inspection or otherwise. 3. Moore V Ltd trading as Moores Estate Agents does not have any authority to give any representations or warranties whatsoever in relation to this property (including but not limited to planning/building regulations), nor can it enter into any contract on behalf of the Vendor. 4. Moore V Ltd trading as Moores Estate Agents does not accept responsibility for any expenses incurred by prospective purchasers in inspecting properties which have been sold, let or withdrawn. 5. If there is anything of particular importance to you, please contact this office and we will try to have the information checked for you.