

The #1 Agent in the area bringing London & out of area buyers to your door



Grade II Listed stone cottage situated in the sought after location of Market Overton

- Stone Cottage
- Grade II Listed
- Three Reception Rooms
- Three Bedrooms
- Secluded Garden
- Off Road Parking
- Outbuildings
- Sought After Location



## Main Street, Market Overton, LE15 7PL

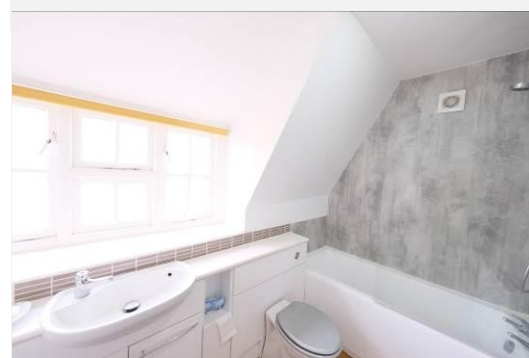
Set in Market Overton, a sought-after Rutland village, this Grade II Listed stone cottage, dating back to the 1700s, is perfectly situated for convenience and community living. The village offers easy access to essential amenities such as a local shop, pub, doctor's surgery, and cricket club. It's also conveniently located for the A1, with Oakham and Stamford nearby, providing a wider choice of eateries, shops, and schools, all highly rated by Ofsted.

The property retains its original charm with features like beams, exposed stone walls, and fireplaces. The entrance hall, leading directly to the garden, introduces the home's welcoming atmosphere. It boasts three reception areas, including a dining room that opens to the garden, offering a nice flow between indoor and outdoor spaces. The kitchen is practical, fitted with modern necessities and ample workspace.

Upstairs, three sizable bedrooms, including a main bedroom with built-in storage and a fireplace, offer comfortable living spaces. The family bathroom serves these rooms. The property also benefits from a seduced garden, mainly laid to lawn with a patio, providing a peaceful outdoor retreat. Two outbuildings, one previously an office and the other for storage, offer flexible additional space.







For more information, please contact a member of the team. For enquiries outside of normal office hours: [outofhours@moorestateagents.com](mailto:outofhours@moorestateagents.com)

Floor Plan Coming Soon!

**moores**  
ESTATE AGENTS.COM

Moores Property Hub 01572 757979 | Uppingham 01572 821935 | Stamford 01780 484555 | Melton 01664 491610  
Peterborough Meet & Greet 01733 788888 | Grantham Meet & Greet 01476 855618 | A1 Meet & Greet Stoke Rochford  
office@mooresestateagents.com | www.mooresestateagents.com

Moore V Ltd trading as Moores Estate Agents gives notice that: 1. These particulars do not constitute an offer or contract or part thereof. 2. All descriptions, photographs and plans are for guidance only and should not be relied upon as statements or representations of fact. All measurements are approximate and not necessarily to scale. Any prospective purchaser must satisfy themselves of the correctness of the information within the particulars by inspection or otherwise. 3. Moore V Ltd trading as Moores Estate Agents does not have any authority to give any representations or warranties whatsoever in relation to this property (including but not limited to planning/building regulations), nor can it enter into a ny contract on behalf of the Vendor. 4. Moore V Ltd trading as Moores Estate Agents does not accept responsibility for any expenses incurred by prospective purchasers in inspecting properties which have been sold, let or withdrawn. 5. If there is anything of particular importance to you, please contact this office and we will try to have the information checked for you.

Follow us on...  Facebook  Twitter  Instagram

For more information, please contact a member of the team. For enquiries outside of normal office hours: [outofhours@mooresestateagents.com](mailto:outofhours@mooresestateagents.com)

[www.mooresestateagents.com](http://www.mooresestateagents.com) | [office@mooresestateagents.com](mailto:office@mooresestateagents.com)