



## Romney House Marsham Street Westminster, London, SW1P 3DR

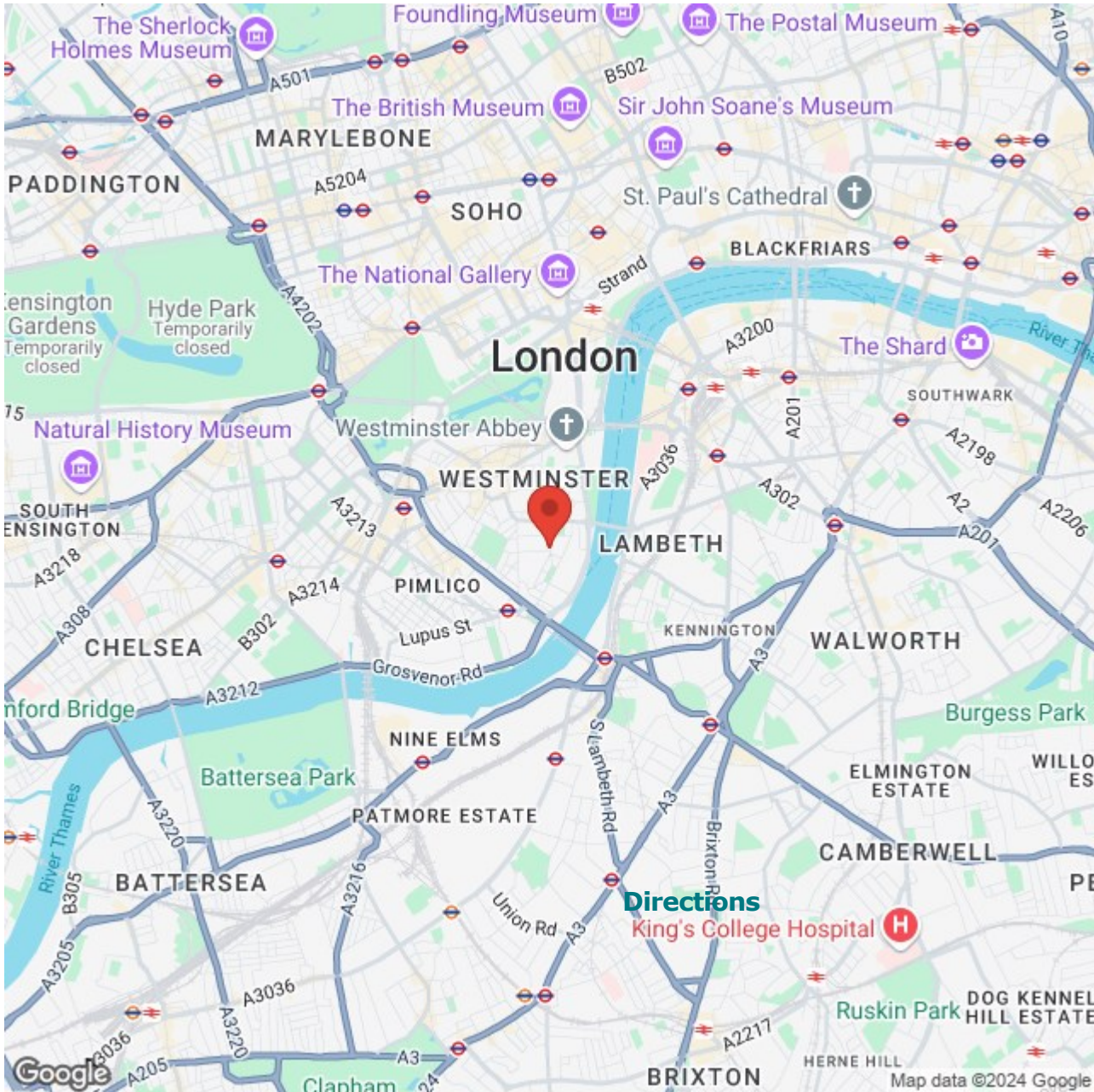
A spacious two bedroom apartment with private terrace located in this popular development close to the river Thames with an underground parking space. Romney House is located on Marsham Street and is convenient for all local amenities including Houses of Parliament, Westminster Abbey and the transport networks at Westminster and St James's Park underground stations, as well as Victoria Railway Station.

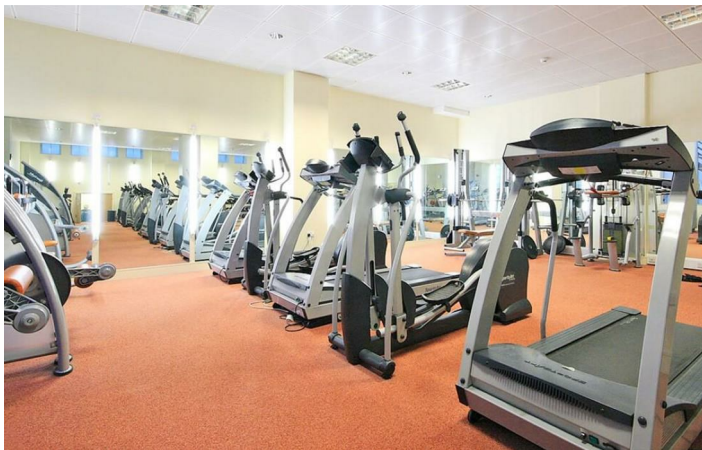
Westminster Abbey approx. 0.3 miles Westminster School approx. 0.2 miles Tate Britain approx. 0.4 miles Pimlico Station approx. 0.6 miles Victoria Station approx. 0.9 miles St James's Park Station approx. 0.4 miles Westminster Station approx. 0.5 miles. The accommodation comprises 2 double bedroom, 2 bathrooms, 1 ensuite, open plan kitchen and spacious reception room. Residents of Romney House benefit from a 24 hour concierge and a gymnasium.

£875,000

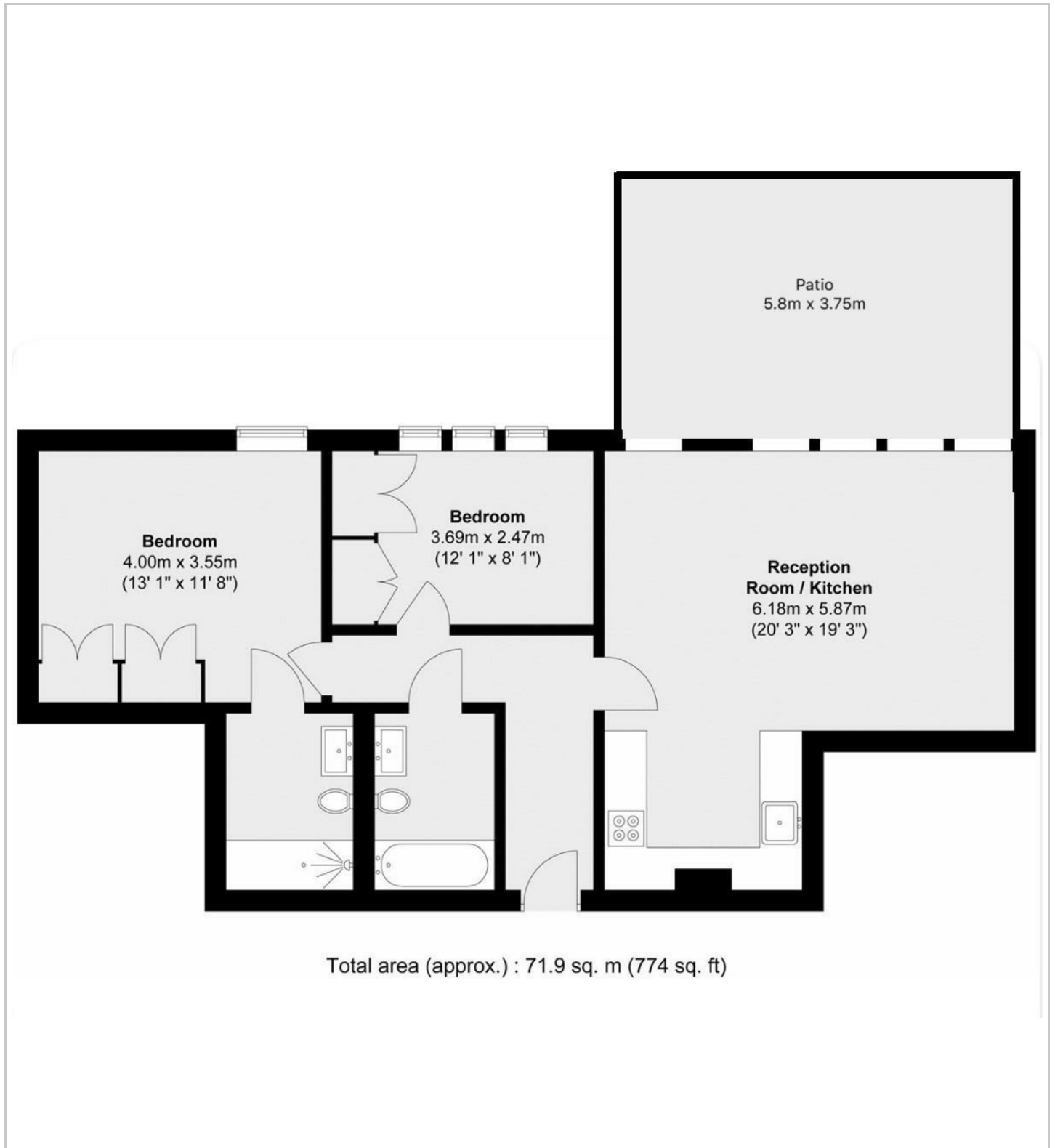
# Romney House Marsham Street

Westminster, London, SW1P 3DR





## Floor Plan



These particulars, whilst believed to be accurate are set out as a general outline only for guidance and do not constitute any part of an offer or contract. Intending purchasers should not rely on them as statements of representation of fact, but must satisfy themselves by inspection or otherwise as to their accuracy. No person in this firm's employment has the authority to make or give any representation or warranty in respect of the property.

