



Flat 2, Astral House Regency Place , London, SW1P 2EA £375,000

A spacious and light first floor studio flat located in the heart of Westminster. Spacious and practical pied a terres such as this are few and far between in Westminster and the generous accommodation in the flat means that there is space to live, work and sleep comfortably. The flat has a long lease, reasonable service charge and is ready to move into.

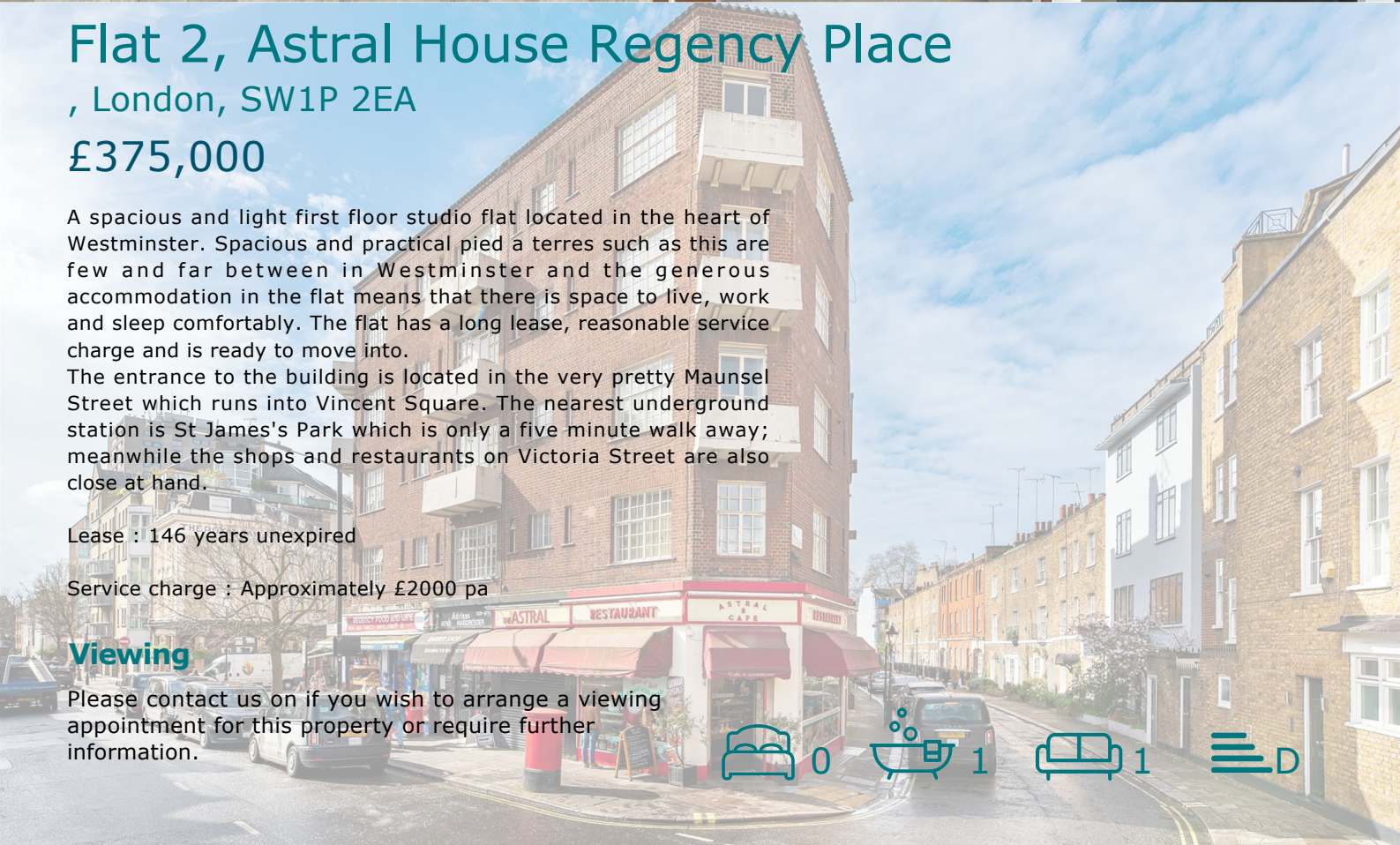
The entrance to the building is located in the very pretty Maunsel Street which runs into Vincent Square. The nearest underground station is St James's Park which is only a five minute walk away; meanwhile the shops and restaurants on Victoria Street are also close at hand.

Lease : 146 years unexpired

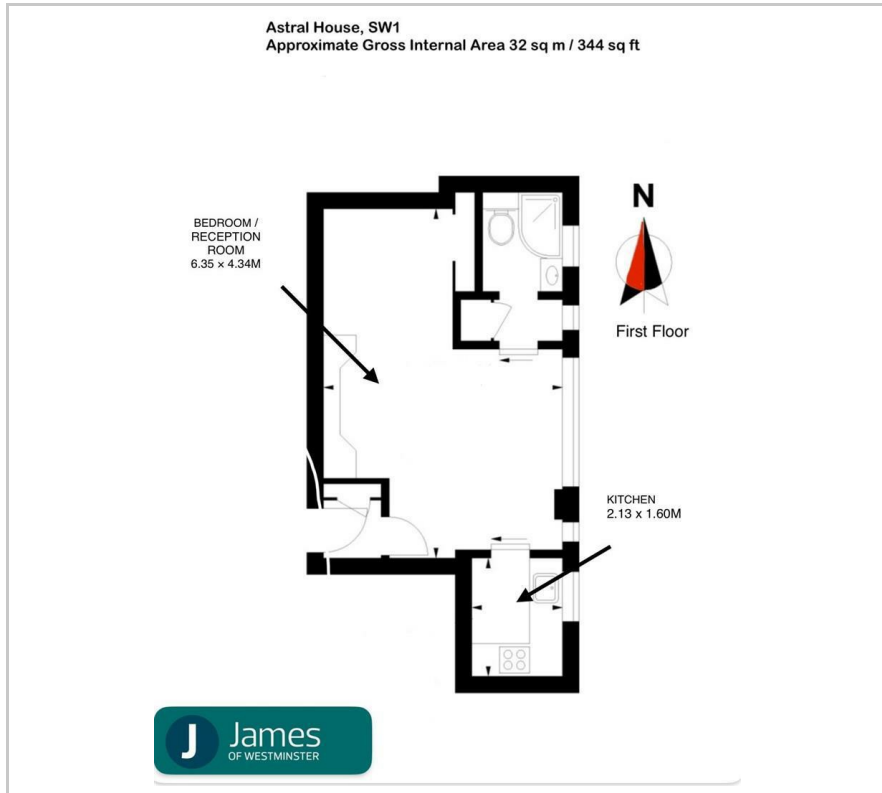
Service charge : Approximately £2000 pa

Viewing

Please contact us on if you wish to arrange a viewing appointment for this property or require further information.



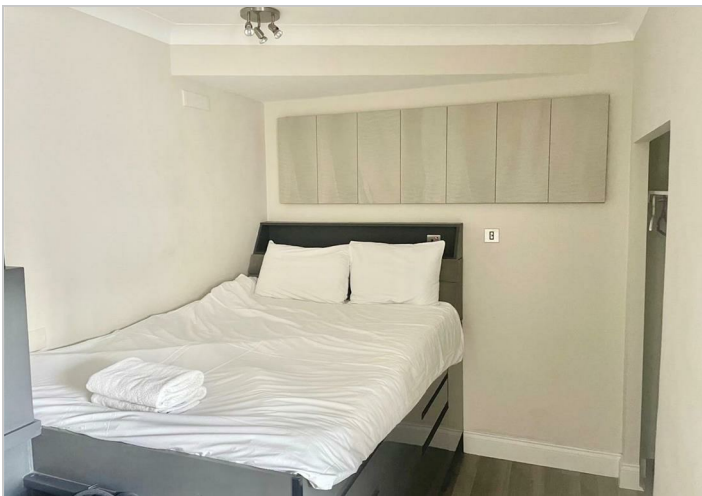
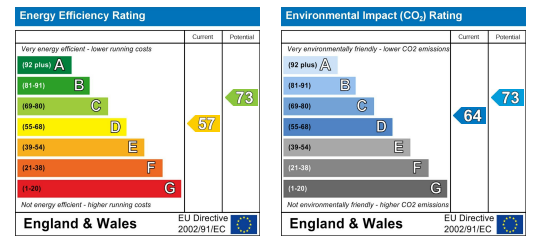
Floor Plan



Area Map



Energy Efficiency Graph



These particulars, whilst believed to be accurate are set out as a general outline only for guidance and do not constitute any part of an offer or contract. Intending purchasers should not rely on them as statements of representation of fact, but must satisfy themselves by inspection or otherwise as to their accuracy. No person in this firm's employment has the authority to make or give any representation or warranty in respect of the property.