



## Apartment 51, 3, Central Building Matthew

, London, SW1H 9NE

£900 Per week

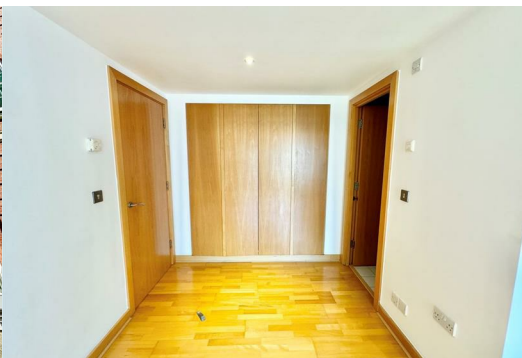


An impressive 7th Floor, Modern 2 bedroom, 2 Bathroom apartment with situated in this prestigious Edwardian conversion on Matthew Parker Street.

Matthew Parker Street is ideally located close to Parliament Square, Whitehall and St James's Park. Also nearby are an array of cafés shops, restaurants, cinema and theatres of Victoria Street.

The development has excellent 24 hour concierge service. This second floor apartment offers an open plan design with wood wooden floors throughout and generous storage. Available May

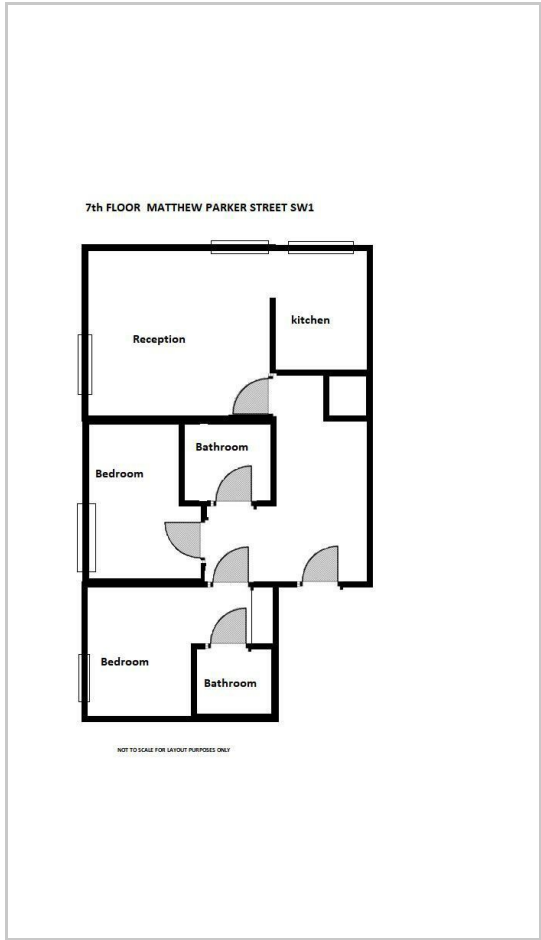
Council Tax Band: G  
Westminster City Council



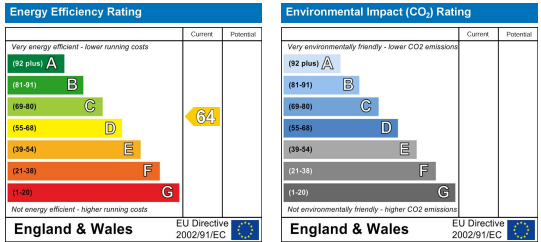
## Area Map



## Floor Plans



## Energy Efficiency Graph



These particulars, whilst believed to be accurate are set out as a general outline only for guidance and do not constitute any part of an offer or contract. Intending purchasers should not rely on them as statements of representation of fact, but must satisfy themselves by inspection or otherwise as to their accuracy. No person in this firm's employment has the authority to make or give any representation or warranty in respect of the property.