



## 44 Denbigh Street

, London, SW1V 2EU

£630,000

A bright and airy top floor 2 bedroom flat in heart of the Pimlico grid. Denbigh Street lies close to Victoria Station as well as the Tachbrook Street market and many other shops, transport facilities and restaurants.

The attractive late Victorian stucco fronted design is part of Pimlico's makeup and combined with its excellent location it would make an excellent London home, pied a terre or letting investment. The apartment is in good condition throughout and is ready for immediate occupation.

Lease : 151 years unexpired

Service Charge : £5611.60 for the current year.

Ground rent : Peppercorn

### Viewing

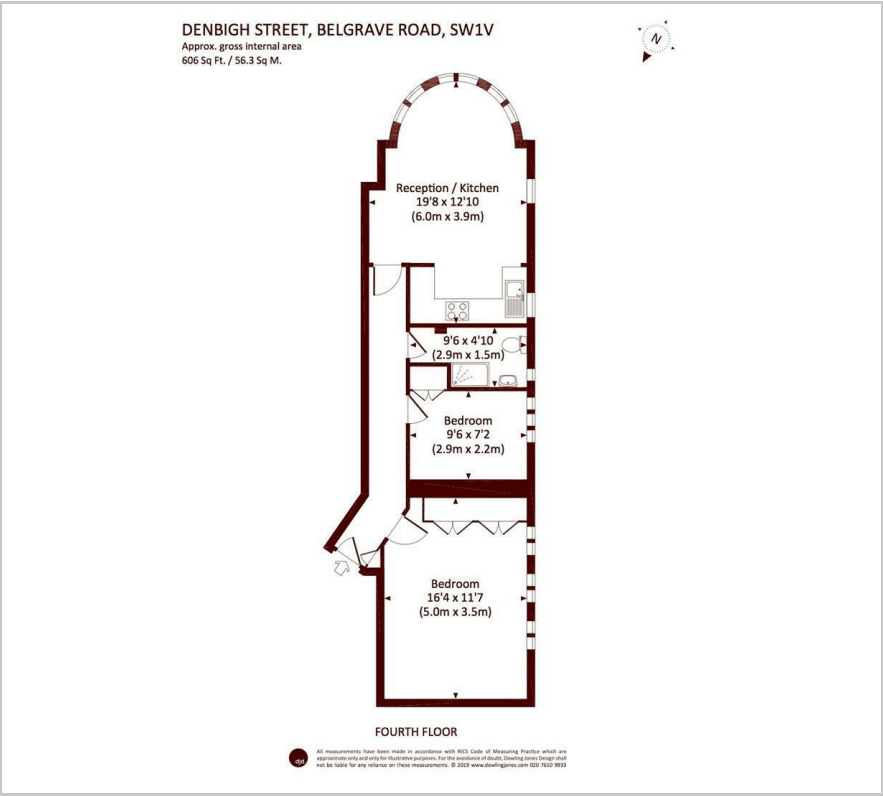
Please contact us on if you wish to arrange a viewing appointment for this property or require further information.

- 2 bedrooms
- Shower room
- Modern open plan Kitchen
- Bright reception room
- Long lease
- Close to Victoria Station
- Many local amenities
- Attractive Victorian building





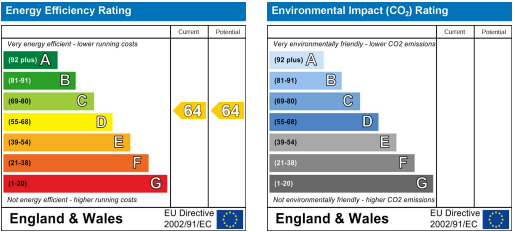
Floor Plan



Area Map



Energy Efficiency Graph



These particulars, whilst believed to be accurate are set out as a general outline only for guidance and do not constitute any part of an offer or contract. Intending purchasers should not rely on them as statements of representation of fact, but must satisfy themselves by inspection or otherwise as to their accuracy. No person in this firm's employment has the authority to make or give any representation or warranty in respect of the property.