



Ormond House Medway Street Westminster, SW1P 2TB

An excellent one bedroom apartment located on the fourth floor of a purpose-built development, with a lift. The property includes a hallway, bedroom, bathroom, separate kitchen, and a reception room with access to two balconies. The building includes a day porter, secure underground parking, and hot water bills are included in the service charge. The apartment enjoys a prime location, benefitting from its proximity to excellent transportation connections such as St James' Park, Westminster, and Victoria Station, all of which are conveniently within walking distance.

Lease : 184 years remaining unexpired

Service charge ; Approximately £5000 pa

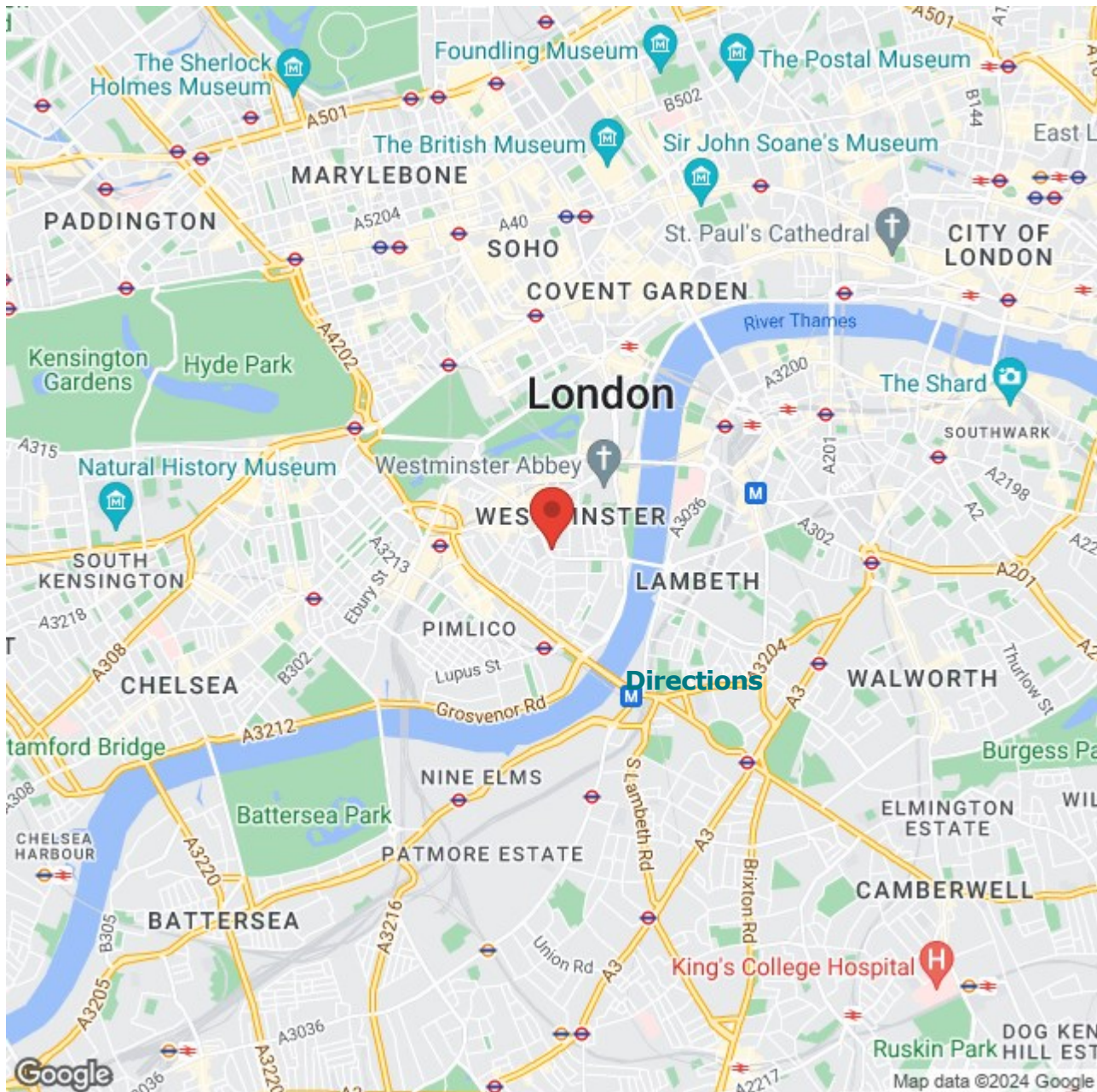
£550,000

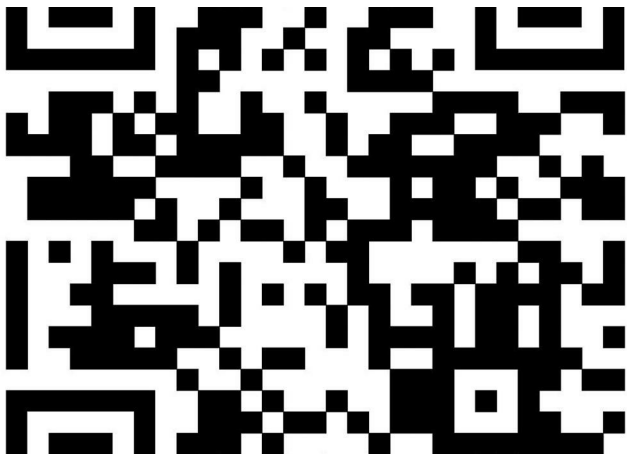
Ormond House Medway Street

Westminster, SW1P 2TB



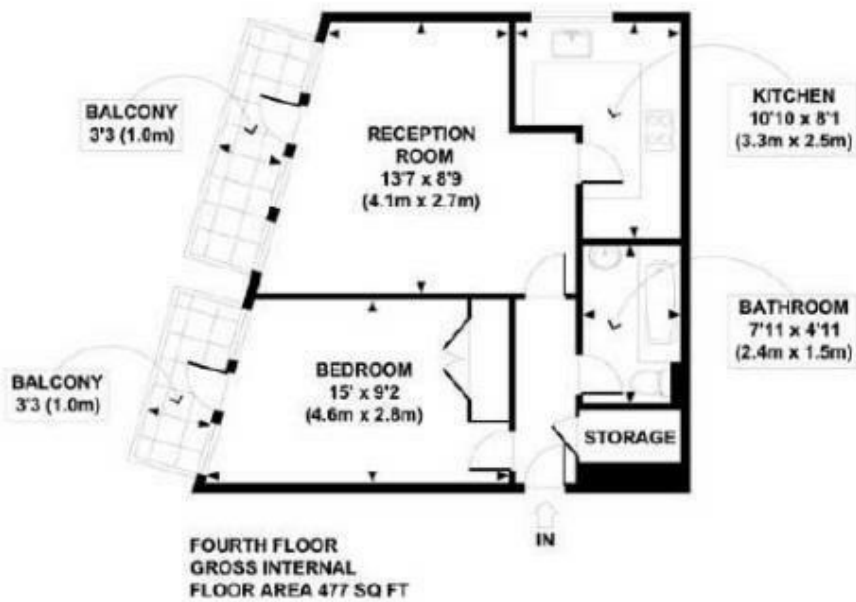
- Double Bedroom
- Reception room with balcony
- Heating and hot water included in service charge
- Modern bathroom and kitchen
- Two Balconies
- Bright Outlook
- Underground car parking space
- Lifts
- Concierge
- 5 Mins walk to St James park station





Floor Plan

Flat 47 Ormond House, Medway Street, London SW1P 2TB



APPROX. GROSS INTERNAL FLOOR AREA 477 SQ FT / 44 SQ M
 MRGJW - 220610 Copyright photoplan.co.uk
 Floorplans are for identification and guideline purposes only, not to scale.
 Compliant with RICS code of measuring practice.

These particulars, whilst believed to be accurate are set out as a general outline only for guidance and do not constitute any part of an offer or contract. Intending purchasers should not rely on them as statements of representation of fact, but must satisfy themselves by inspection or otherwise as to their accuracy. No person in this firm's employment has the authority to make or give any representation or warranty in respect of the property.

Energy Efficiency Rating		Environmental Impact (CO ₂) Rating	
Current	Potential	Current	Potential
84	86		
<p>Key: energy efficient - lower running costs</p> <p>(87-91) A</p> <p>(81-86) B</p> <p>(69-80) C</p> <p>(55-68) D</p> <p>(39-54) E</p> <p>(21-38) F</p> <p>(1-20) G</p> <p>Not energy efficient - higher running costs</p>		<p>Key: environmentally friendly - lower CO₂ emissions</p> <p>(81-91) A</p> <p>(69-80) B</p> <p>(55-68) C</p> <p>(39-54) D</p> <p>(21-38) E</p> <p>(1-20) F</p> <p>Not environmentally friendly - higher CO₂ emissions</p>	
England & Wales		England & Wales	
EU Directive 2002/91/EC		EU Directive 2002/91/EC	