

Gladstone Court 97 Regency Street Westminster, London, SW1P 4AL

Beautiful second floor mansion flat with porter and gym. Gladstone Court is on Regency Street which is located near Horseferry Road and Vincent Square, as is Victoria Street with an extensive selection of shops, restaurants, cafes and boutiques. The local area is extremely well connected with Victoria railway station providing national mainline services including the Gatwick Express and underground stations at Victoria, St James's Park, Westminster and Pimlico all within convenient distances. The flat comprises; two spacious bedrooms, one bathroom, one shower room and separate kitchen and the building further benefits from a porter, gym, communal garden and passenger lift. Local amenities include St James's Park, the Houses of Parliament, Westminster Abbey and Cathedral and Tate Britain.

£750 Per week

Gladstone Court 97 Regency Street

Westminster, London, SW1P 4AL



- 2 Double bedrooms
- Bathroom
- Shower room
- Kitchen
- Reception Room
- Porterage
- Pretty communal gardens
- Lift
- Gymnasium
- Quiet central location



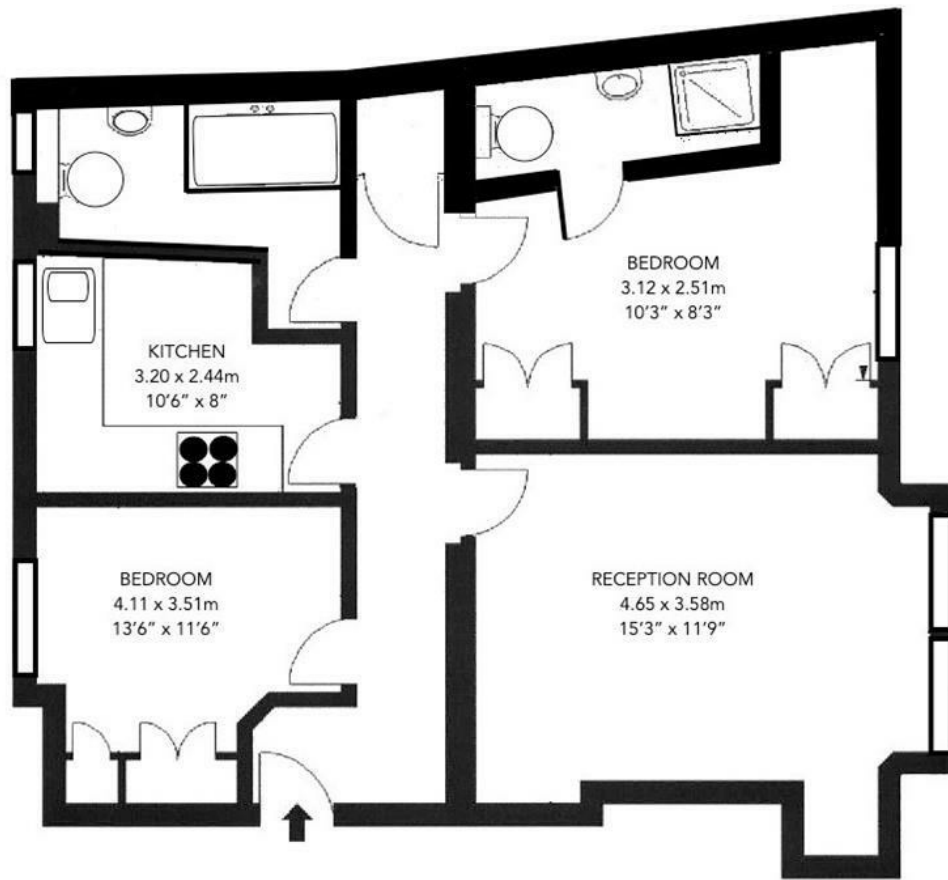
Directions



Floor Plan

GLADSTONE COURT REGENCY STREET

SW1
Approx. Gross Internal Area
697 Ft/64.75 M²



THIRD FLOOR

These particulars, whilst believed to be accurate are set out as a general outline only for guidance and do not constitute any part of an offer or contract. Intending purchasers should not rely on them as statements of representation of fact, but must satisfy themselves by inspection or otherwise as to their accuracy. No person in this firm's employment has the authority to make or give any representation or warranty in respect of the property.

