



## Morgan House Vauxhall Bridge Road

Pimlico, London, SW1V 2LF

£1,750 Per month

Morgan House lies in the heart of Pimlico and is close to the shopping and transport facilities located in Tachbrook Street and Victoria. Pimlico underground and Tate Britain are also just a short walk away.

The flat is an excellent place to call your London base which is both convenient and great value for money.

The apartment benefits from just being newly decorated and has a fabulous balcony with great views over the communal gardens.

Heating and Hot Water included

Students welcome

EPC 70  
Potential 76

- Newly Decorated
- Spacious reception room
- Seperate bedroom
- Kitchenette
- Shower room
- Lift
- 2nd floor
- Communal gardens
- Bars and Restaurants
- Pimlico and Victoria Station

### Viewing

Please contact us on if you wish to arrange a viewing appointment for this property or require further information.



1



1



1

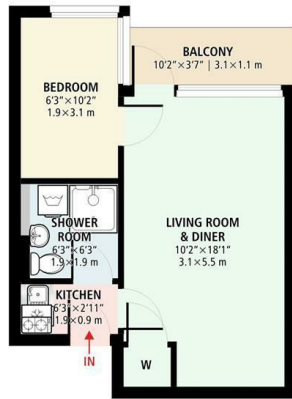


# Floor Plan

## 1 BEDROOM FLAT

SW1V

Total gross internal area:  
306.3 sq. ft. | 28.45 sq. m. (approximate)



SECOND FLOOR

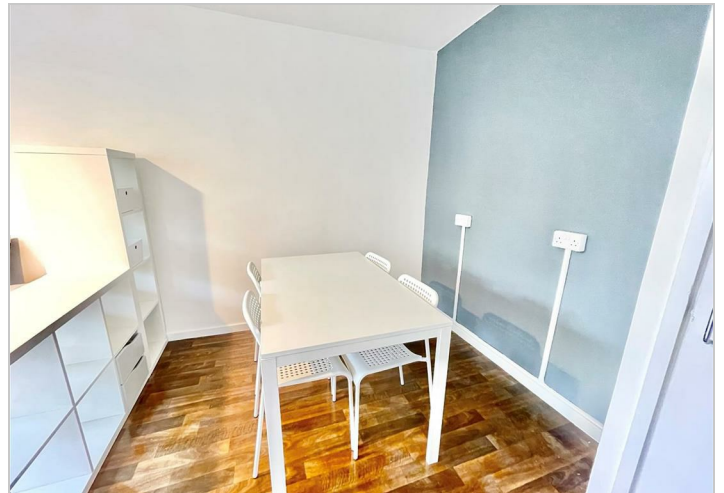
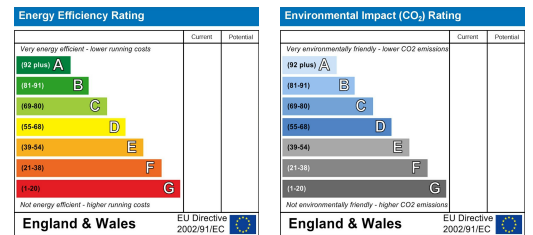
Disclaimer: This floor plan is for illustrative purposes only. Whilst every attempt has been made in accordance with RICS Property Measurement Standards to ensure the accuracy of the plan contained here, measurements of doors, windows, fixtures and any other items are approximate. All measurements for the individual area lengths and widths are maximum, metered at the widest points. Due to rounding, numbers may not add up precisely. Plots and gardens are illustrative only and excluded from all area calculations. The services, systems and appliances shown have not been tested and no guarantee to their working order can be given.

Copyright © 2022 JJsnap.co.uk All rights reserved.

# Area Map



# Energy Efficiency Graph



These particulars, whilst believed to be accurate are set out as a general outline only for guidance and do not constitute any part of an offer or contract. Intending purchasers should not rely on them as statements of representation of fact, but must satisfy themselves by inspection or otherwise as to their accuracy. No person in this firm's employment has the authority to make or give any representation or warranty in respect of the property.

15 Greycoat Place, Westminister, London, SW1P 1SB

t. e. james@jamesofwestminster.co.uk www.jamesofwestminster.co.uk