



## Greycoat Gardens Greycoat Street Westminster, London, SW1P 2QA

A well presented and spacious, one double bedroom second floor apartment situated in this impressive mansion block in the heart of Westminster. The well appointed property is flooded with natural light with good views and has plenty of built-in storage throughout. Accommodation comprises a large bright reception with room to dine and entertain, separate kitchen, generous double bedroom and shower room. On-site benefits include caretaker, attractive landscaped gardens and secure bike storage. Greycoat Gardens is located just off of Vincent Square and close to the local amenities on Rochester Row, Victoria Street and Horseferry Road. The property is very well placed for some of London's finest restaurants, boutiques and theatres which are all within walking distance. Transport is well catered for and provided by St James's Park and Pimlico underground and Victoria mainline station.

Lease : Share of Freehold

Service Charge £5300 for the current year

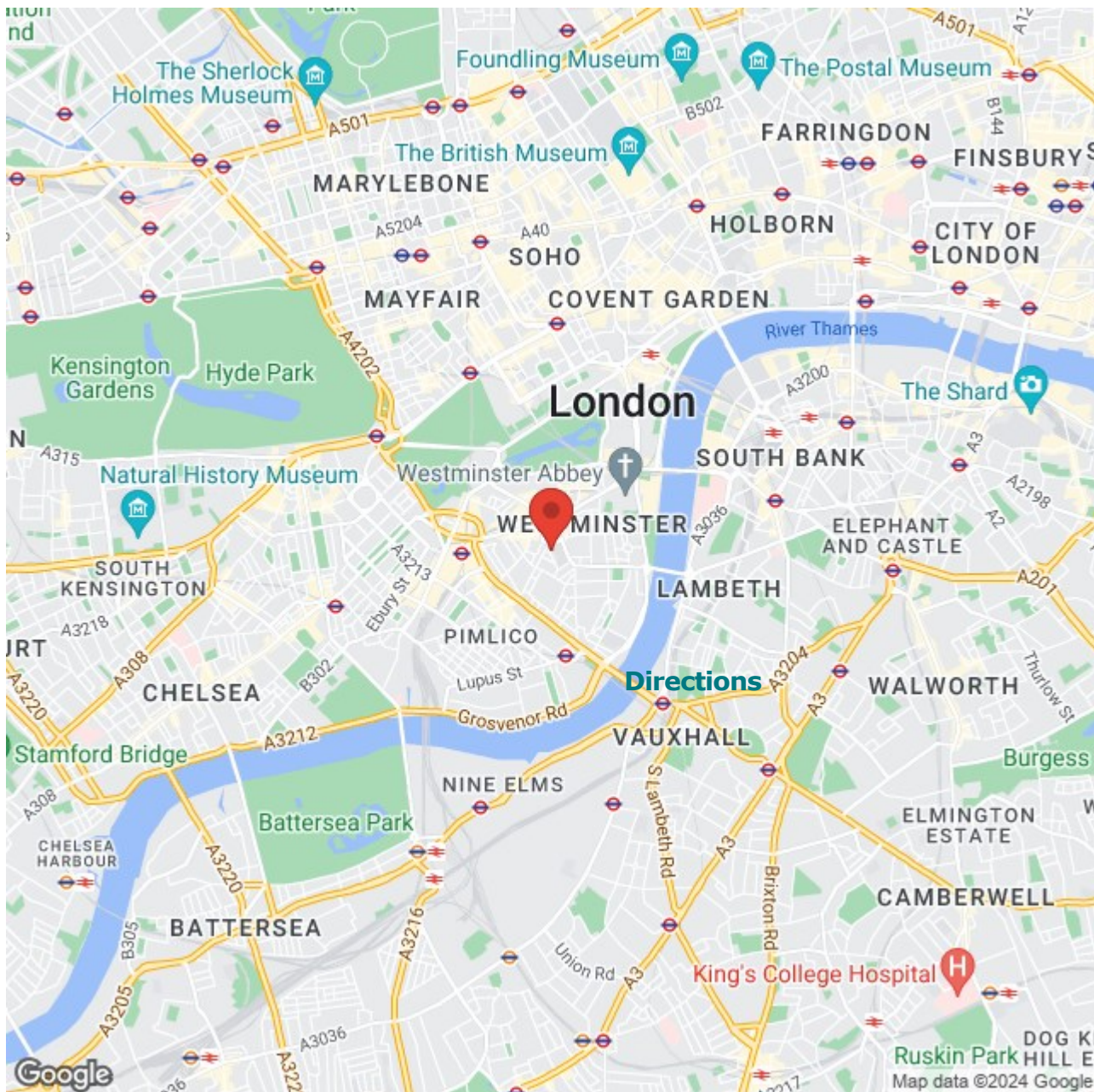
**£625,000**

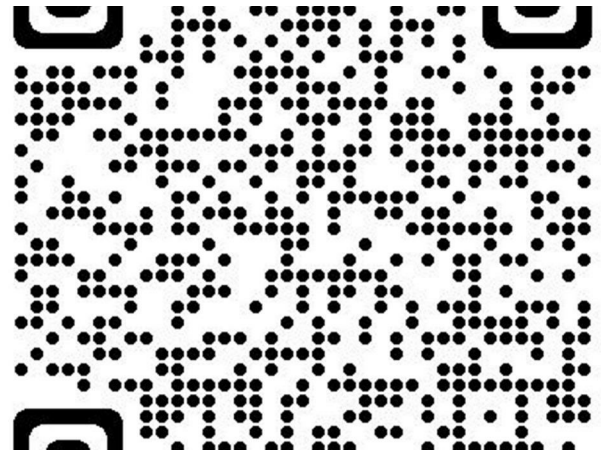
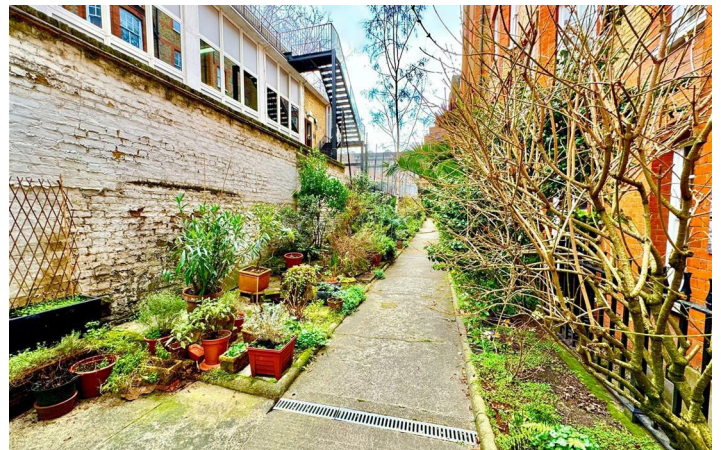
# Greycoat Gardens Greycoat Street

Westminster, London, SW1P 2QA

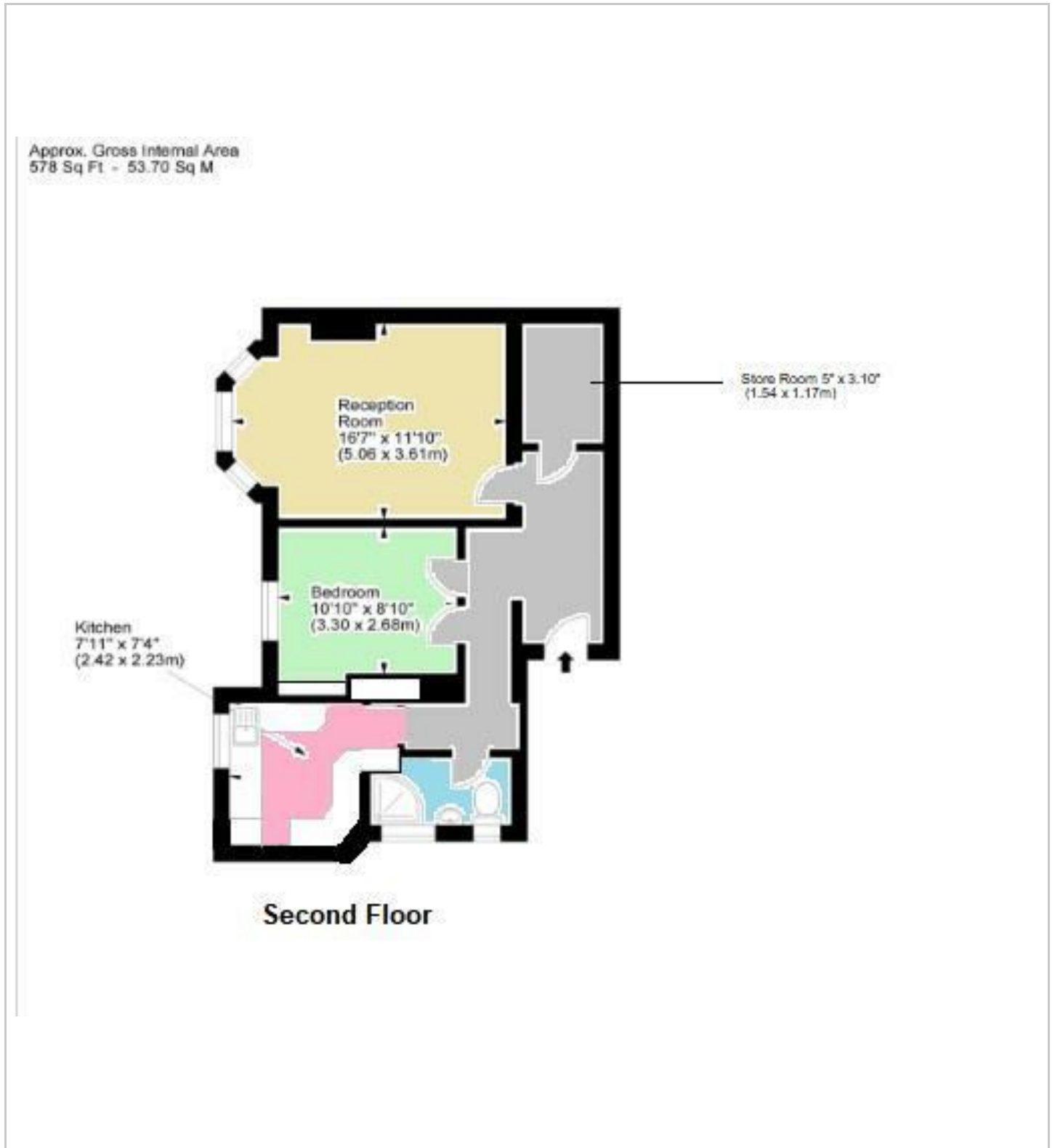


- Charming Mansion block
- Double bedroom
- Share of Freehold
- Close to St James Park and underground
- Close to Vincent Square
- Shower room
- Patio gardens
- Fine reception room
- Bright kitchen
- 2nd floor





## Floor Plan



These particulars, whilst believed to be accurate are set out as a general outline only for guidance and do not constitute any part of an offer or contract. Intending purchasers should not rely on them as statements of representation of fact, but must satisfy themselves by inspection or otherwise as to their accuracy. No person in this firm's employment has the authority to make or give any representation or warranty in respect of the property.

