



Westminster Green 8 Dean Ryle Street Westminster, London, SW1P 4DA

This elegant and stylish apartment has come to the market in what is still widely considered to be one of the best and most desirable blocks in Westminster. The most in demand flats in the building will be spacious with high ceilings, have some outside space and face west over the pretty St Johns gardens, and this is one such flat.

The block has many attributes including 24 hour portage, allocated parking space, business suite and gymnasium. The location is first class being as it is located between the Tate Gallery and Parliament with four underground stations within walking distance. Victoria Street and its many shops and restaurants is a short walk away.

Lease - 980 years unexpired plus a share of Freehold.
Service charge - Approximately £10,000 for the current year

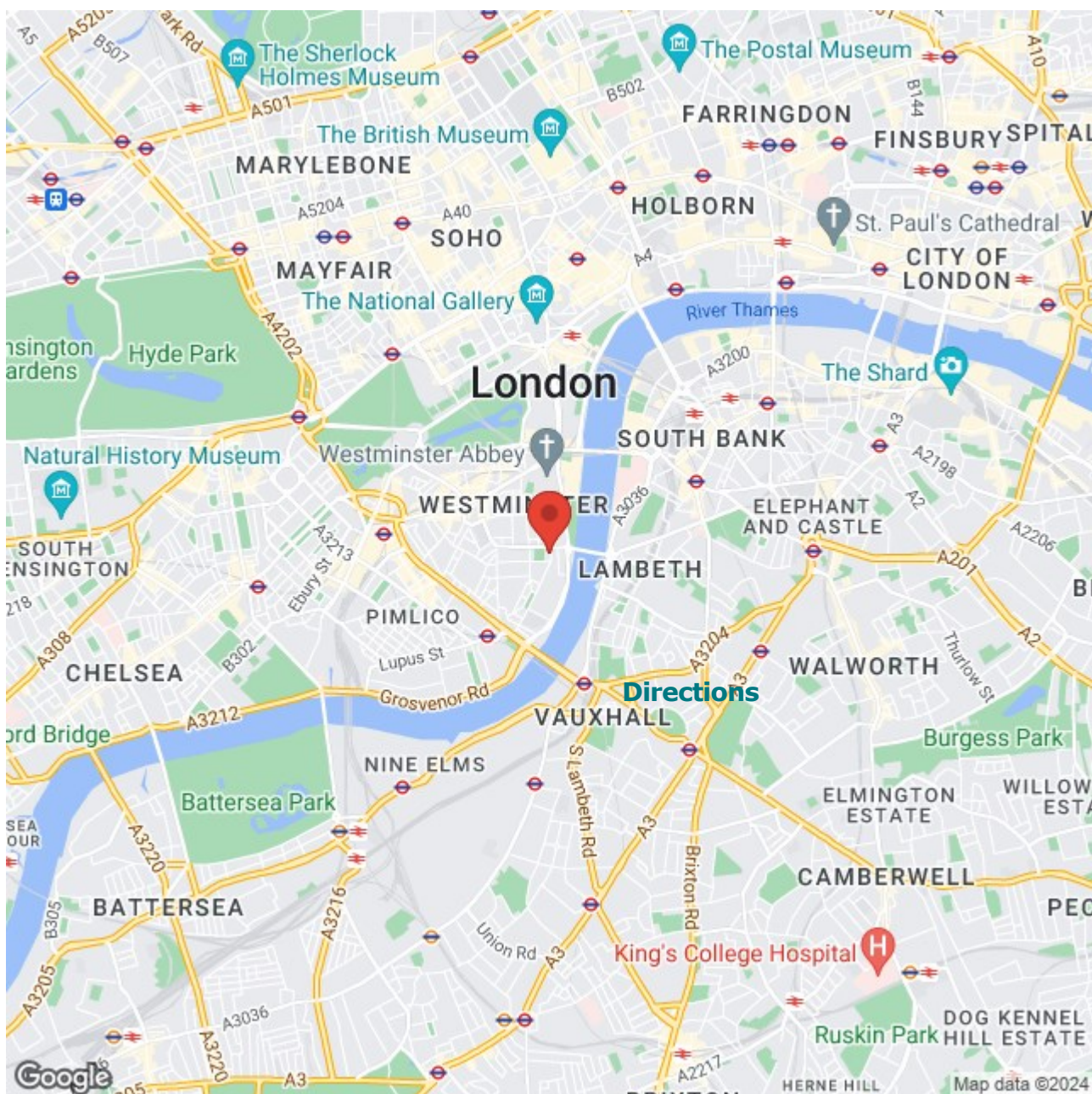
£1,550,000

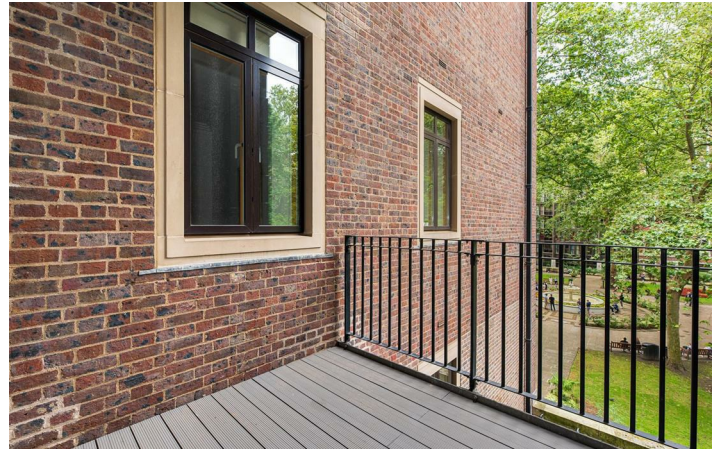
Westminster Green 8 Dean Ryle Street

Westminster, London, SW1P 4DA



- 3 DOUBLE BEDROOMS
- EN-SUITE BATHROOM
- FAMILY BATHROOM
- ELEGANT RECEPTION ROOM
- MODERN KITCHEN
- HIGH CEILINGS
- TERRACE FACING GARDENS
- SHARE OF FREEHOLD
- 24 HOUR PORTERAGE
- ALLOCATED PARKING SPACE





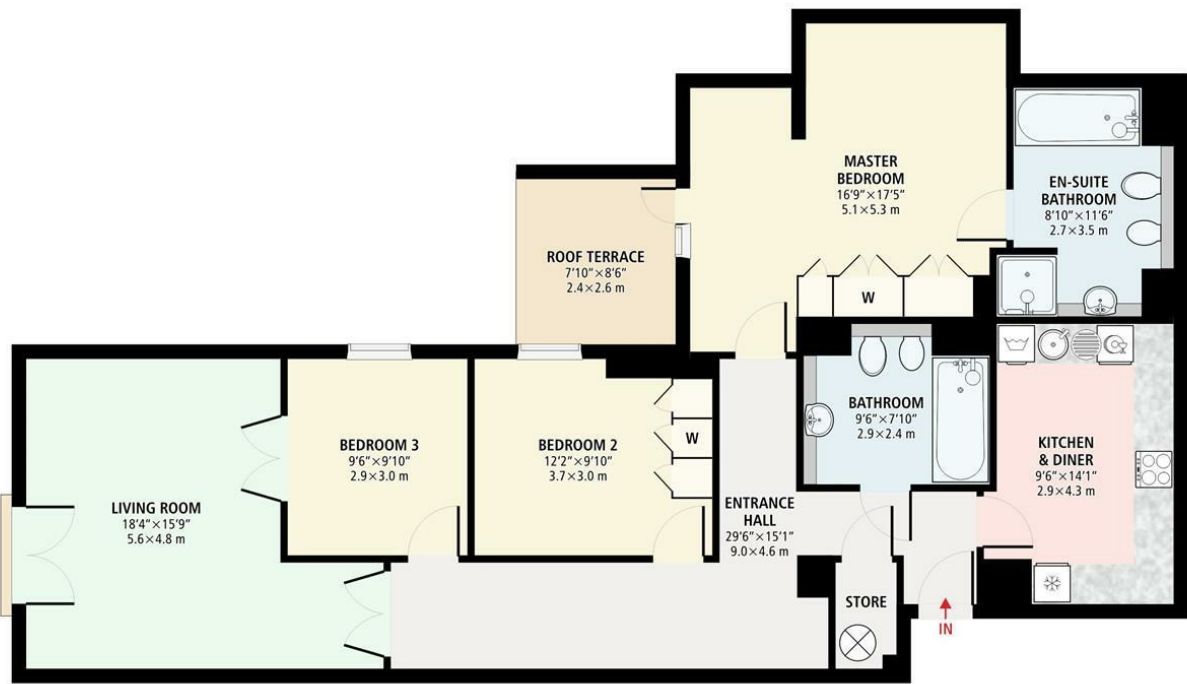
Floor Plan



3 BEDROOM FLAT @ WESTMINSTER GREEN



Total gross internal area: 1245.9 sq. ft. | 115.74 sq. m.
(approximate)



THIRD FLOOR

Disclaimer: This floor plan is for illustrative purposes only. Whilst every attempt has been made in accordance with RISC Property Measurement Standards to ensure the accuracy of the plan contained here, measurements of doors, windows, fixtures and any other items are approximate. All measurements for the individual area lengths and widths are maximum, metered at the widest points. Due to rounding, numbers may not add up precisely. Plots and gardens are illustrative only and excluded from all area calculations. The services, systems and appliances shown have not been tested and no guarantee to their working order can be given.

Copyright © 2023 JJsnap.co.uk All rights reserved.

These particulars, whilst believed to be accurate are set out as a general outline only for guidance and do not constitute any part of an offer or contract. Intending purchasers should not rely on them as statements of representation of fact, but must satisfy themselves by inspection or otherwise as to their accuracy. No person in this firm's employment has the authority to make or give any representation or warranty in respect of the property.

