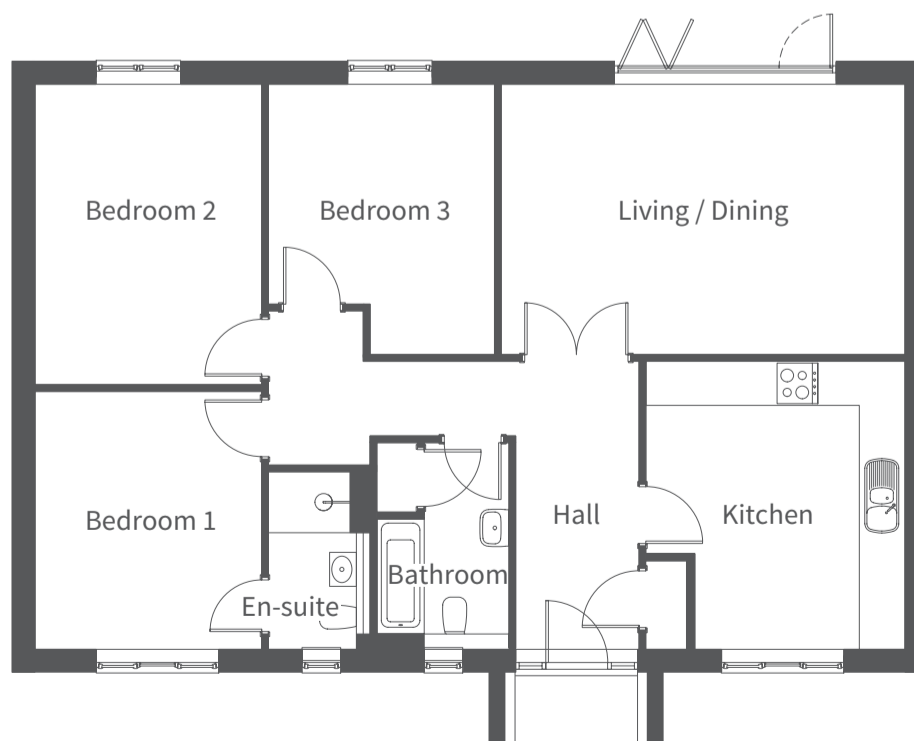




# The Rowan

## Three bedroom bungalow

| Ground Floor        | Millimetres | Feet / inches  |
|---------------------|-------------|----------------|
| Kitchen / Breakfast | 4220 x 3800 | 13'10" x 12'6" |
| Living / Dining     | 5930 x 3960 | 19'5" x 12'12" |



| Ground Floor | Millimetres | Feet / inches   |
|--------------|-------------|-----------------|
| Bedroom 1    | 3780 x 3320 | 12'5" x 10'11"  |
| En-suite     | 2590 x 1500 | 8'6" x 4'11"    |
| Bedroom 2    | 4410 x 3320 | 14'6" x 10'11"  |
| Bedroom 3    | 3960 x 3330 | 12'12" x 10'11" |
| Bathroom     | 3020 x 1950 | 9'11" x 6'5"    |

Please note: other floor plans and elevations for each property are available. As each house is built individually, maximum dimensions shown above may vary +50mm /- 50mm and the internal finishes may not always be the same.



External finishes, materials, landscaping, positions and colours of windows and garages (where applicable) may also vary. Properties can also be constructed as mirror images of that shown. Please ask if you require further clarification.