



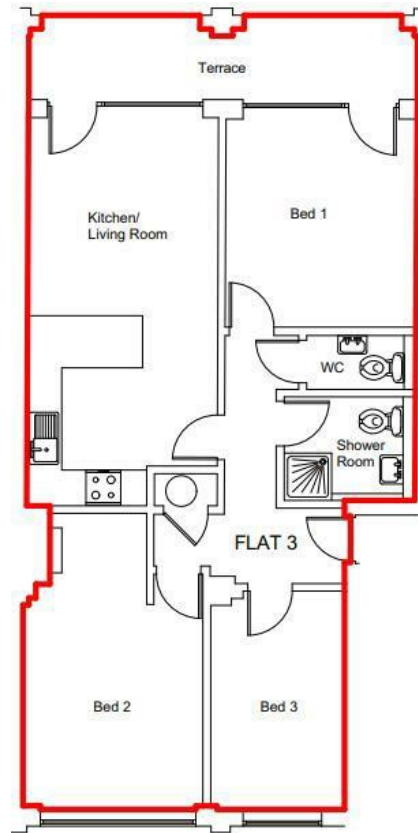
## 8-10 Woodcote Side

, Epsom KT18 7HD

- Large open-plan Kitchen/Living
- Good size single bedroom
- Private terrace
- 2 double bedrooms
- Parking
- Backing on to woodland

£1,900 Per Calendar Month

Local Authority Epsom  
Council Tax Band D  
EPC Rating D



**We Are Lettings Ltd RESI Office**

G7 Thames House, 63-67 Kingston  
Road, New Malden, Surrey, KT3 3PB

**Contact**

020 8037 5953  
[admin@wearelettings.co.uk](mailto:admin@wearelettings.co.uk)

Agents Note: Whilst every care has been taken to prepare these particulars, they are for guidance purposes only. All measurements are approximate and for general guidance purposes only and whilst every care has been taken to ensure accuracy, they should not be relied upon and potential buyers/tenants are advised to recheck the measurements.

