



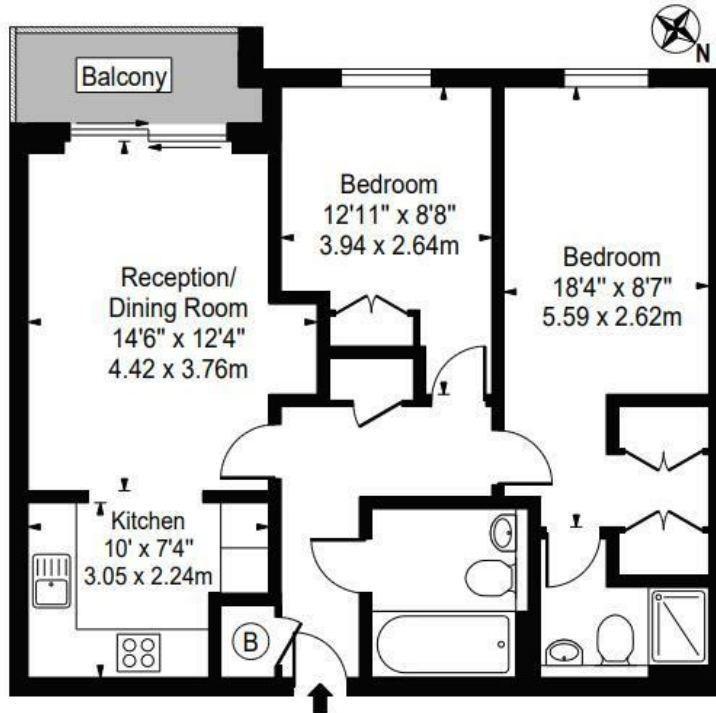
## Highbury Drive , Leatherhead KT22 7UN

- 2 spacious bedrooms
- Built in storage
- Balcony
- Lift
- 2 modern bathrooms
- Open-plan Kitchen/Living room
- Parking

£1,550 Per Calendar Month

Local Authority Mole  
Valley  
Council Tax Band D  
EPC Rating B

Approx. Gross Internal Area 666 Sq Ft - 61.87 Sq M



Second Floor

For Illustration Purposes Only - Not To Scale

**We Are Lettings Ltd RESI Office**

G7 Thames House, 63-67 Kingston  
Road, New Malden, Surrey, KT3 3PB

**Contact**

020 8037 5953  
admin@wearelettings.co.uk

Agents Note: Whilst every care has been taken to prepare these particulars, they are for guidance purposes only. All measurements are approximate and for general guidance purposes only and whilst every care has been taken to ensure accuracy, they should not be relied upon and potential buyers/tenants are advised to recheck the measurements.

