

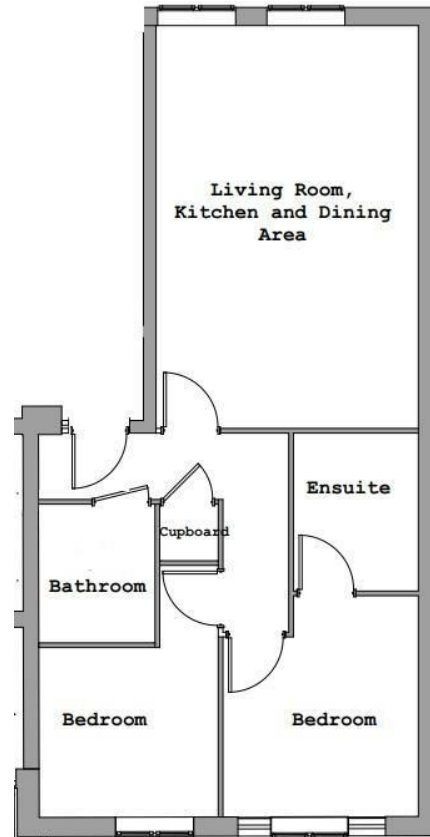


## Montem Road , New Malden KT3 3QW

- OPEN PLAN KITCHEN/LIVING ROOM
- EN-SUITE TO PRINCIPAL BEDROOM
  - ALLOCATED PARKING
  - GAS CENTRAL HEATING
- 2 DOUBLE BEDROOMS
  - SHOWER ROOM
  - DISHWASHER
  - EPC RATING C

£2,000 PCM

Local Authority Kingston  
upon Thames Royal  
Borough  
Council Tax Band C



**We Are Lettings Ltd RESI Office**

G7 Thames House, 63-67 Kingston  
Road, New Malden, Surrey, KT3 3PB

**Contact**

020 8037 5953  
admin@wearelettings.co.uk

Agents Note: Whilst every care has been taken to prepare these particulars, they are for guidance purposes only. All measurements are approximate and for general guidance purposes only and whilst every care has been taken to ensure accuracy, they should not be relied upon and potential buyers/tenants are advised to recheck the measurements.

