

# Westlake Court

TWO BEDROOM APARTMENTS

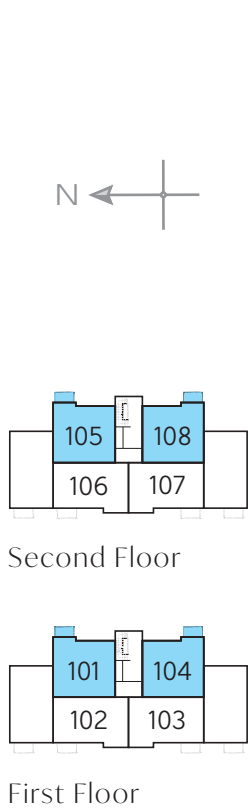


THE  
**ARTISAN**  
COLLECTION



**Phoenix Park**  
A development of new homes in Kingsmead, Oxfordshire

**Bellway**



## The Lewis - Plots 98, 101 & 105

Kitchen/Living/Dining	8.60m x 2.90m	28'3" x 9'6"
Bedroom 1	4.35m x 2.78m	14'3" x 9'2"
Bedroom 1 En Suite	2.25m x 1.61m	7'5" x 5'3"
Bedroom 2	4.65m x 2.78m	15'3" x 9'2"
Bathroom	2.08m x 2.10m	6'10" x 6'11"
<b>Total area</b>	<b>71.41 sq. m.</b>	<b>769 sq. ft.</b>



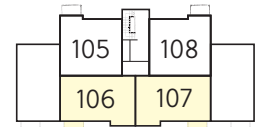
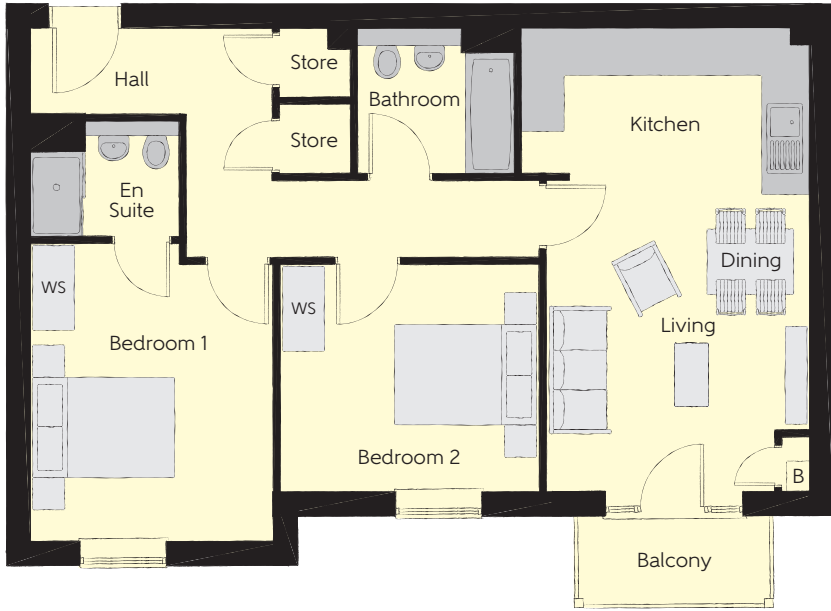
## The Lewis - Plots 99, 104 & 108

Kitchen/Living/Dining	8.60m x 2.90m	28'3" x 9'6"
Bedroom 1	4.35m x 2.78m	14'3" x 9'2"
Bedroom 1 En Suite	2.25m x 1.61m	7'5" x 5'3"
Bedroom 2	4.65m x 2.78m	15'3" x 9'2"
Bathroom	2.08m x 2.10m	6'10" x 6'11"
<b>Total area</b>	<b>71.41 sq. m.</b>	<b>769 sq. ft.</b>

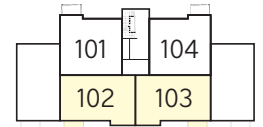
WS - Wardrobe Space (suggestion only, wardrobe not included) BS - Bin Store CS - Cycle Store B - Boiler.

**Furniture arrangements are for illustrative purposes only. Items are not included, nor to scale.**

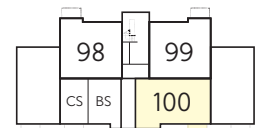
The items shown in this key may be subject to change, and positions could vary from those indicated on this floorplan. Please refer to Sales Advisor for details of your selected plot. External finishes and landscaping may vary. Please refer to Sales Advisor for further details. All dimensions are approximate and should not be used for carpet sizes, appliance spaces or furniture. We operate a policy of continuous improvement and individual features such as kitchen and bathroom layouts, doors, windows, garages and elevational treatments may vary from time to time. Consequently these particulars should be treated as general guidance only and do not constitute a contract, part of a contract or a warranty.



Second Floor



First Floor



Ground Floor

### The Filbert – Plots 100, 103 & 107

Kitchen/Living/Dining	6.43m x 3.67m	21'1" x 12'0"
Bedroom 1	4.13m x 3.37m	13'7" x 11'1"
Bedroom 1 En Suite	2.10m x 1.64m	6'11" x 5'5"
Bedroom 2	3.63m x 3.17m	11'11" x 10'5"
Bathroom	2.20m x 2.00m	7'3" x 6'7"
<b>Total area</b>	<b>71.79 sq. m.</b>	<b>773 sq. ft.</b>

### The Filbert – Plots 102 & 106

Kitchen/Living/Dining	6.43m x 3.67m	21'1" x 12'0"
Bedroom 1	4.13m x 3.37m	13'7" x 11'1"
Bedroom 1 En Suite	2.10m x 1.64m	6'11" x 5'5"
Bedroom 2	3.63m x 3.17m	11'11" x 10'5"
Bathroom	2.20m x 2.00m	7'3" x 6'7"
<b>Total area</b>	<b>71.79 sq. m.</b>	<b>773 sq. ft.</b>

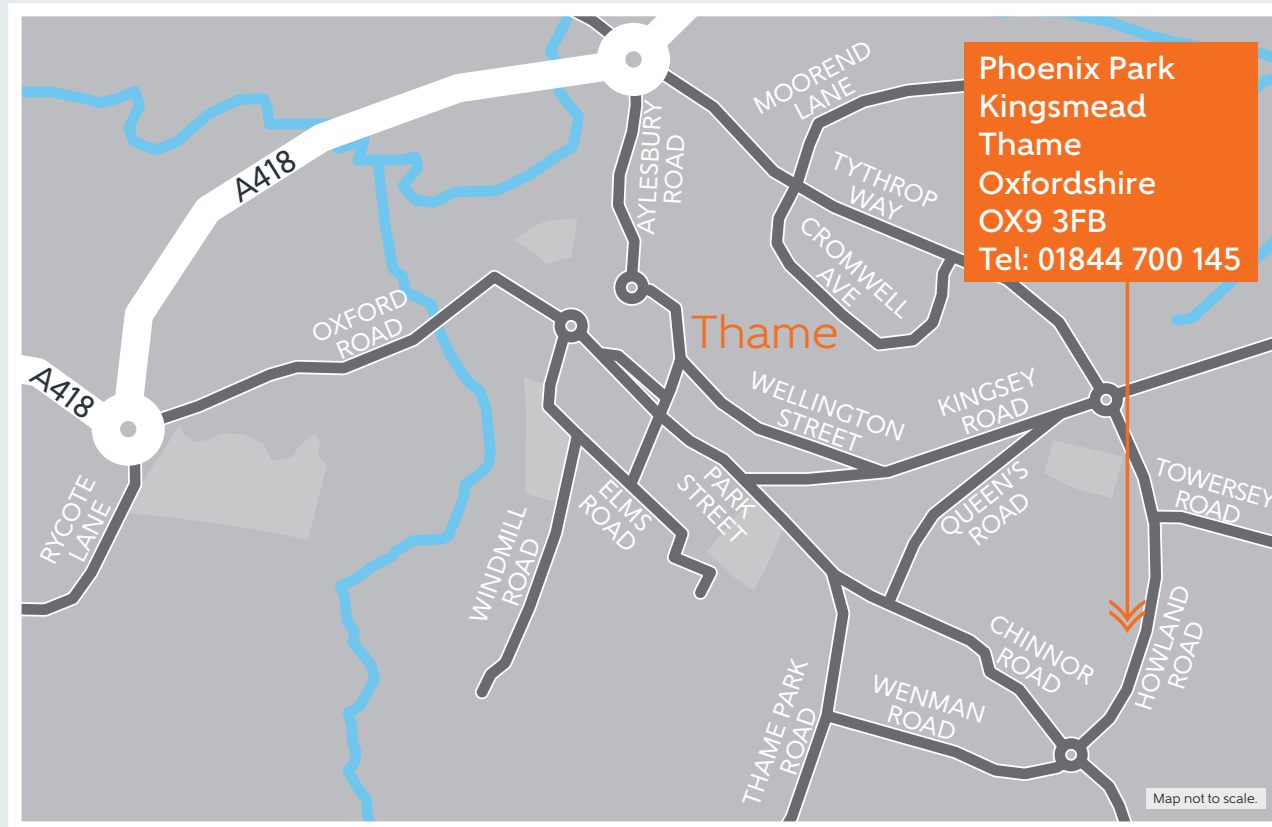
WS - Wardrobe Space (suggestion only, wardrobe not included) BS - Bin Store CS - Cycle Store B - Boiler.

**Furniture arrangements are for illustrative purposes only. Items are not included, nor to scale.**

The items shown in this key may be subject to change, and positions could vary from those indicated on this floorplan. Please refer to Sales Advisor for details of your selected plot. External finishes and landscaping may vary. Please refer to Sales Advisor for further details. All dimensions are approximate and should not be used for carpet sizes, appliance spaces or furniture. We operate a policy of continuous improvement and individual features such as kitchen and bathroom layouts, doors, windows, garages and elevational treatments may vary from time to time. Consequently these particulars should be treated as general guidance only and do not constitute a contract, part of a contract or a warranty.

# How to find us

---



Bellway Homes Limited (Thames Valley)  
Pacific House, Imperial Way, Reading, Berkshire RG2 0TD  
Telephone: 0118 933 8020 [bellway.co.uk](http://bellway.co.uk)

