



On Behalf of TT Group



## The Strand Car Park

8 Strand, Swansea, , SA1 1DP

### To Let - The Strand Car Park

### Short Term Lease Available

**0.27 Acres**

(0.11 Hectares)

- Surfaced Car Park
- Site Area of 0.27 Acres
- Prominent location in Swansea City Centre

# The Strand Car Park, 8 Strand, Swansea, SA1 1DP

## Summary

<b>Available Size</b>	0.27 Acres
<b>Business Rates</b>	Upon Enquiry
<b>VAT</b>	Applicable
<b>Legal Fees</b>	Each party to bear their own costs
<b>EPC Rating</b>	EPC exempt - No building present

## Description

The site comprises a surfaced car park measuring 0.27 acres. The site is rectangular in shape, level and surfaced with tarmac. The car park provides a total of circa 60 spaces.

## Location

The car park is located on Strand, Swansea, adjacent to the popular Wind Street.

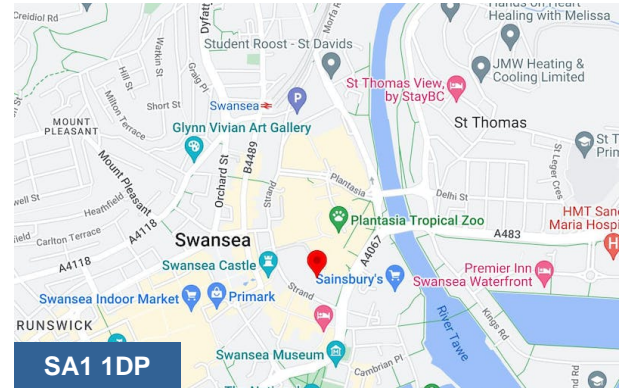
The site is conveniently located to major transport links, 0.1 miles the A4067, and 5.5 miles west of J42 M4 Motorway providing direct access to major destinations such as Camarthen, Cardiff and Bristol.

## Viewings

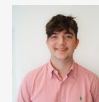
Appointments are to be made via sole letting agents Cooke and Arkwright.

## Anti-Money Laundering (AML) Regulations

The Purchaser will be required to satisfy the Vendor and their agents regarding the source of the funds used to complete the transaction plus providing identification where necessary.



## Viewing & Further Information



**Max Wood**

02920346336

max.wood@coark.com



**Rhys Price**

02920 346374

rhys.price@coark.com